



GIRLS LEAD GIRLS RUN is a national non-profit organization about supporting leadership and decision-making skills of girls by connecting them to the environment, providing training in a wide variety of skills, and teaching economic integrity with a fundraising merchandise sales program. The Midwest Chapter of Girls Lead Girls Run has chosen to re-purpose an existing building in Milwaukee, WI. This building is designed to direct and support girls to glide in the provided opportunities. Inspired by the forms, agility and iridescence of Milwaukee's native dragonfly, GLGR aims to provide an environment that supports young girls on their flight to success.

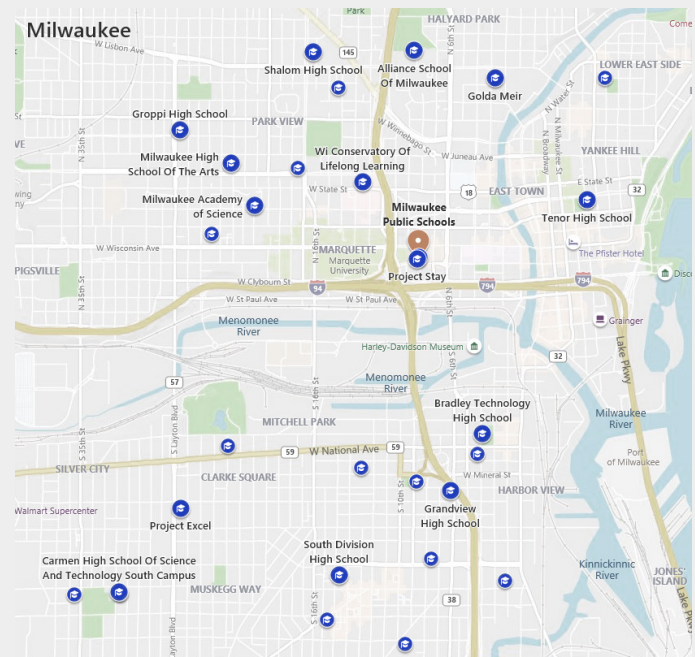


### BREAK-OUT SPACES

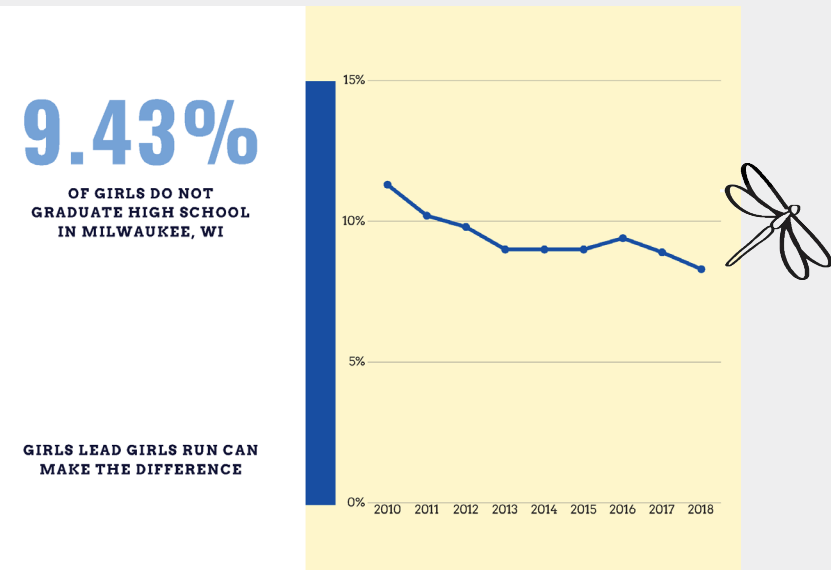
Adjacent to the large rentable public space and classroom are the break-out spaces down the main corridor. The break-out spaces provide an area for collaboration among peers and leaders. Utilizing Filzfelt Line 2 Hanging Panels, users are able to modify the space to facilitate break-outs or planned/unplanned assemblies for up to 40 individuals.

# Girls Lead Girls Run Milwaukee, WI

### LOCATION RESEARCH



This map shows the public high schools in the Milwaukee, WI area. GLGR creates a space where girls can come together from different areas and push each other to learn at new heights.

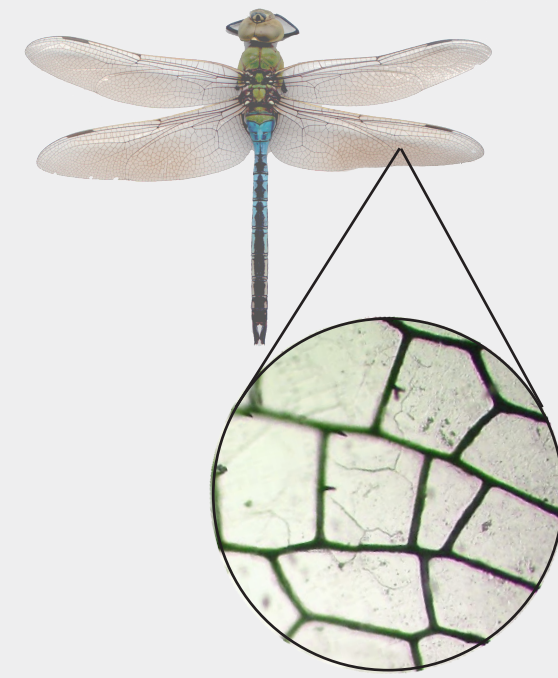


This graph shows the percentage of female students who do not complete high school with their adjusted cohort and earn a credential according to the Wisconsin Information Systems for Education. A non-completer is any student who reached the end of the 4-, 5-, 6- or 7-year timeframe without earning a high school completion credential.

### GOALS

1. REFLECT THE VALUES associated with nature. (Psychological Goal) The client chose the building because the land was reflective of the values associated with nature. I believe that every great exterior is reflected inside. Reflecting this appreciation for nature would be pleasing to the client and could be done by using sustainable features and materials.
2. PROMOTE COLLABORATION supporting leadership and decision-making skills. This allows the community, the girls, and the employees to work in proximity to one another. Collaboration builds great leaders by providing opportunity for girls to direct a group and be immersed in conversation and bonding.
3. PROVIDE A FUNCTIONAL AND APPEALING PUBLIC SPACE to give back to the community in order to bring revenue to the GLGR organization. This is important to invite the community into the space and so that a huge amount of square footage does not go to waste. Design thinking may question how the public could use the space. In turn, promoting the public spaces will also promote revenue for the GLGR organization. This is appropriate because the client emphasizes the gift shop as a central part of the building as well as a large budget going towards "rentable" space. It is obvious that the client wants to have a space compelling for generated revenue.

### INSPIRATION



The Common Green Darner (*Anax junius*) is a lovely migratory dragonfly that visits Wisconsin from April through September. This native invertebrate is Wisconsin's most common large dragonfly. The dragonfly's agile flight and its ability to move in all six directions exude a sense of power and poise - something that comes only with age and maturity. The dragonfly exhibits iridescence both on its wings as well as on its body. Iridescence is the property of an object to show itself in different colors depending on the angle and polarization of light falling on it. This property is seen and believed as the end of one's self created illusions and a clear vision into the realities of life. The magical property of iridescence is also associated with the discovery of one's own abilities by unmasking the real self and removing the doubts one casts on his/her own sense of identity. This again indirectly means self discovery and removal of inhibitions. (<https://www.dragonfly-site.com/meaning-symbolize.html>)

### FURNITURE



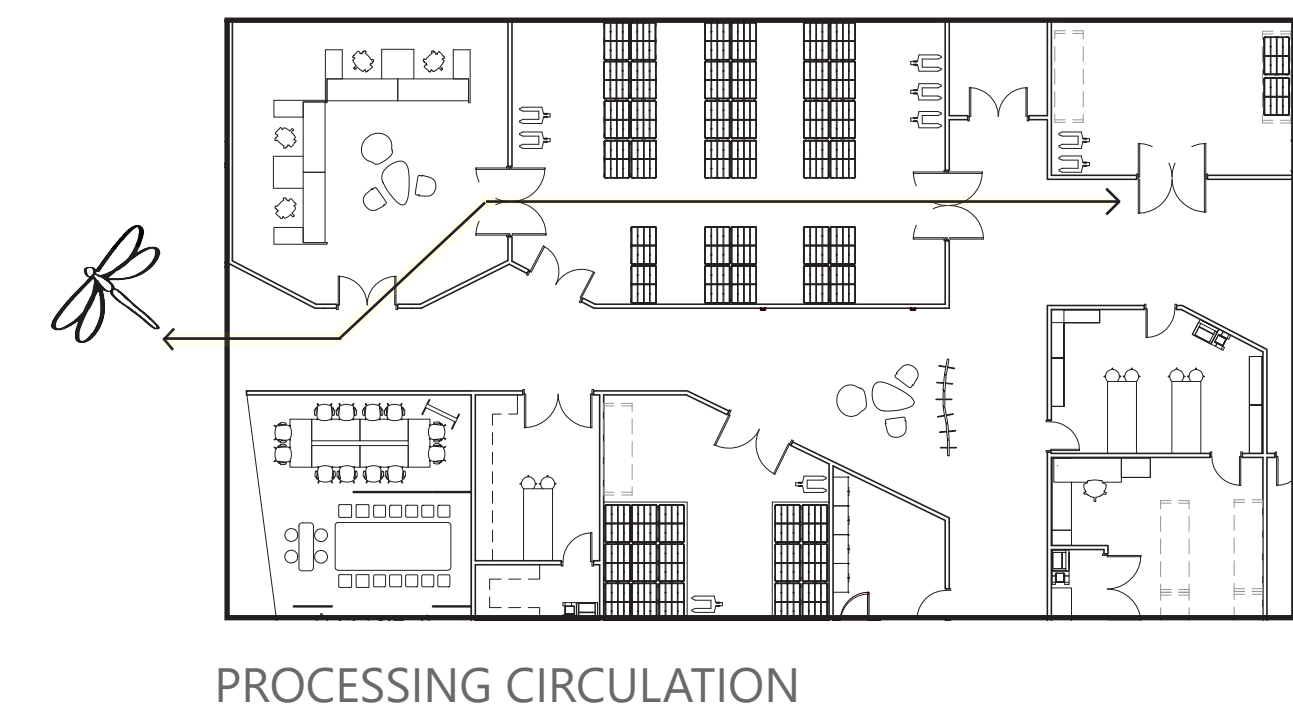
### FUNDRAISING MERCHANDISE PROCESSING AREA



### LOBBY



### CLASSROOM



### KEY

- 1 - MAIN LOBBY (1,419 sq.ft.)
- 2 - RETAIL SPACE (1,603 sq.ft.)
- 3 - RETAIL STORAGE (500 sq.ft.)
- 4 - CLASSROOM/ LEARNING AREA (2,813 sq.ft.)
- 5 - BREAK-OUT ROOMS (675 sq.ft.)
- 6 - CATERING KITCHEN (150 sq.ft.)
- 7 - RESOURCE CENTER (573 sq.ft.)
- 8 - RESOURCE CENTER STORAGE (223 sq.ft.)
- 9 - STAFF WELLNESS CENTER (450 sq.ft.)
- 10 - VESTIBULE/WEATHER BARRIER (147 sq.ft.)
- 11 - RECEIVING (402 sq.ft.)
- 12 - MAIL/COPY (310 sq.ft.)
- 13 - FILE STORAGE (156 sq.ft.)
- 14 - FUNDRAISING STORAGE & DISTRIBUTION (1,307 sq.ft.)
- 15 - FUNDRAISING PROCESSING AREA (803 sq.ft.)
- 16 - MERCHANDISE SALES PROGRAM COORDINATORS (1,238 sq.ft.)

### FURNITURE FINISHES



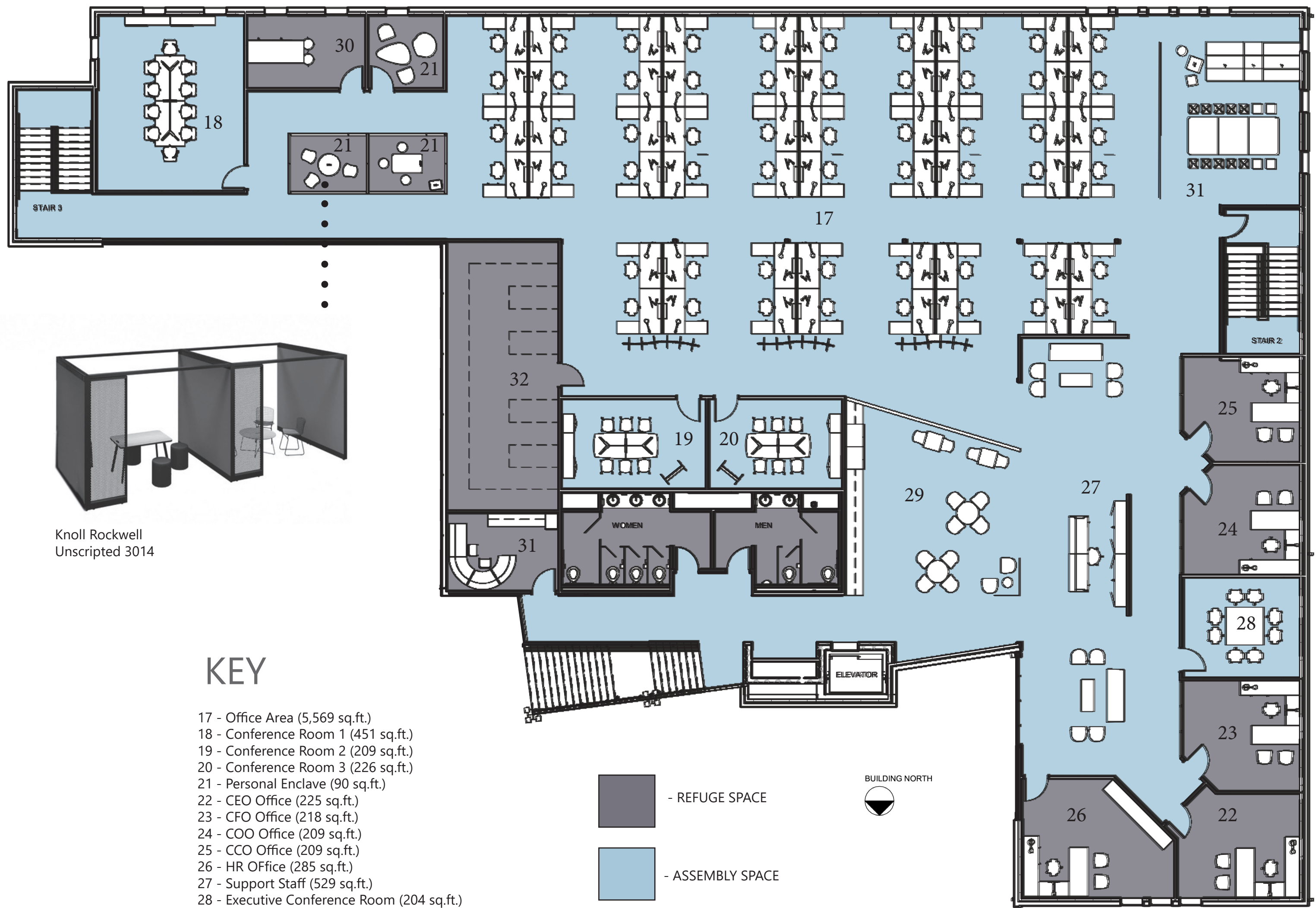
### FIRST FLOOR PLAN

# FURNITURE



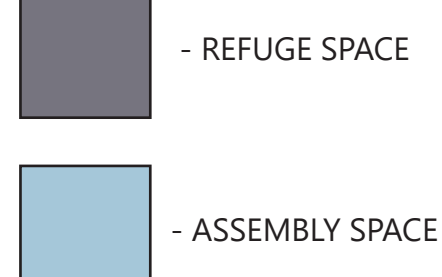
## EXECUTIVE OFFICE

## WORK STATIONS



### KEY

- 17 - Office Area (5,569 sq.ft.)
- 18 - Conference Room 1 (451 sq.ft.)
- 19 - Conference Room 2 (209 sq.ft.)
- 20 - Conference Room 3 (226 sq.ft.)
- 21 - Personal Enclave (90 sq.ft.)
- 22 - CEO Office (225 sq.ft.)
- 23 - CFO Office (218 sq.ft.)
- 24 - COO Office (209 sq.ft.)
- 25 - CCO Office (209 sq.ft.)
- 26 - HR Office (285 sq.ft.)
- 27 - Support Staff (529 sq.ft.)
- 28 - Executive Conference Room (204 sq.ft.)
- 29 - Break Room (518 sq.ft.)
- 30 - IT Room (150 sq.ft.)
- 31 - Well Room (151 sq.ft.)
- 32 - General Storage (523 sq.ft.)



## SECOND FLOOR PLAN

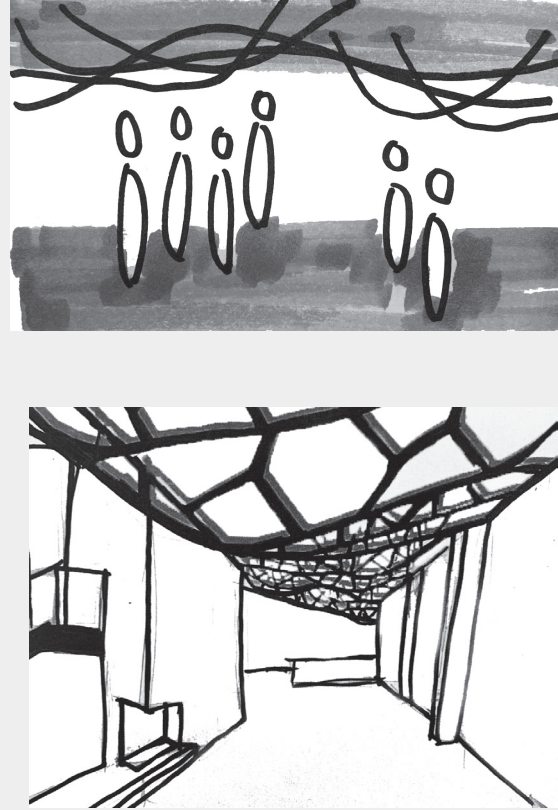
# FURNITURE FINISHES



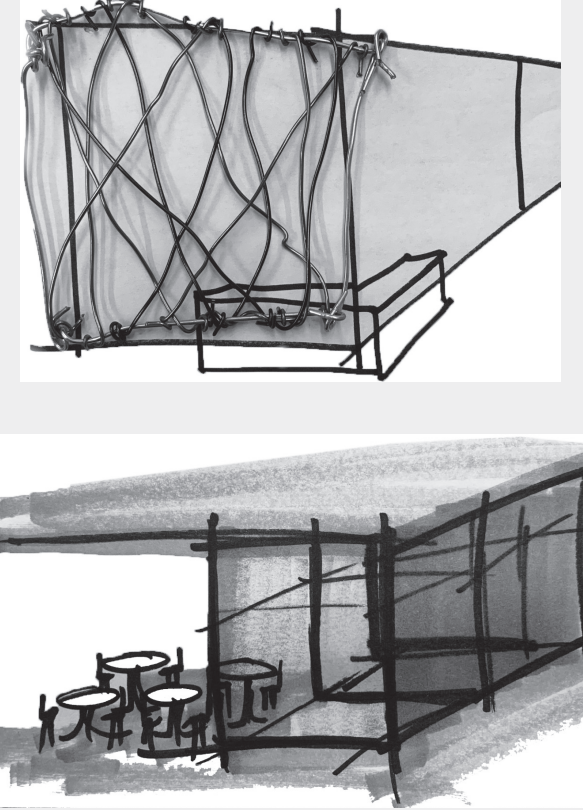
# PROCESS WORK



The layout of the floor plans use the trapezoid shapes of the dragonfly wings to define space and adjacency relationships



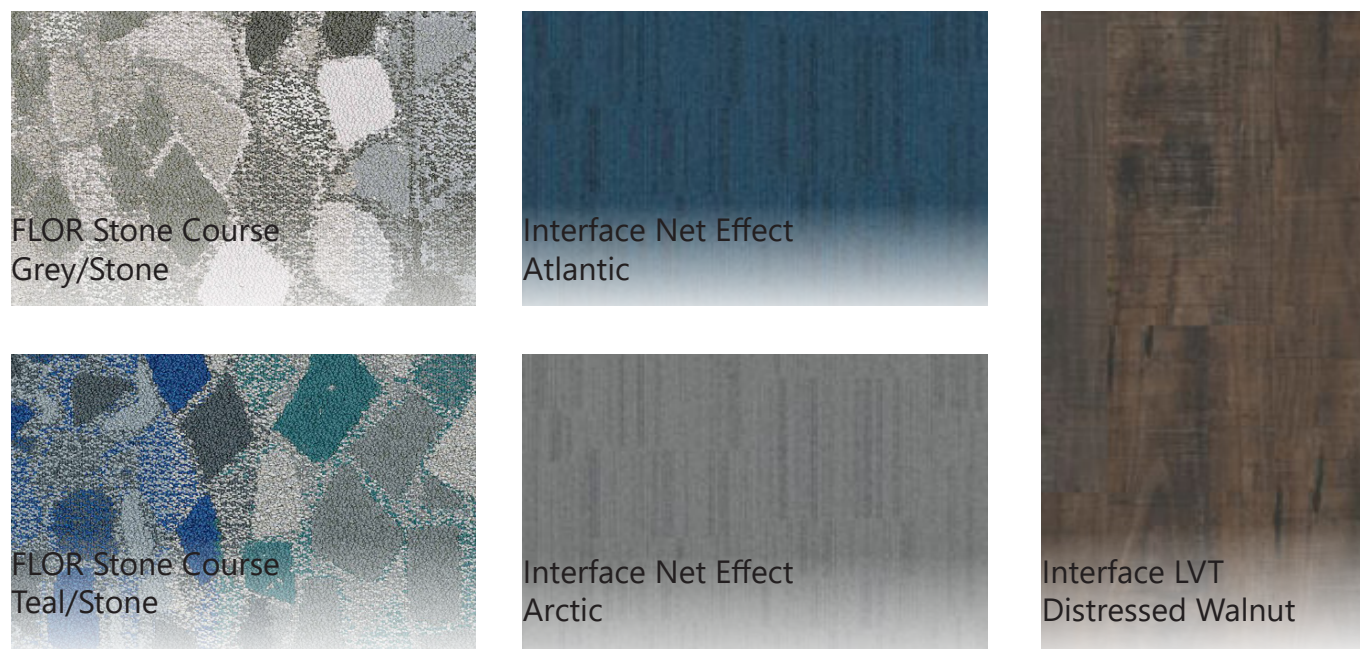
Imitating new heights, ceiling details were an important part of the beginning drawing process. Starting as loose connections, promoting collaboration, the ceiling forms began to represent strength in heavy material.



Creating a sense of security and privacy is essential when working with young girls. Dividing the spaces, to create privacy, while keeping an open concept was thought out from the beginning of the design phase.

Researching Milwaukee's Common Green Darner, known for its powerful wings expressed through agility, iridescence, and trapezoid forms, the design for GLGR directly reflects the dragonfly's strong features. Agility is expressed in wayfinding, circulation paths in flooring, and strong grounding elements that create nodes for common meeting places. This agility was direct application in the processing area for distribution of merchandise to volunteers. Iridescence is captured in the illuminated ceiling details, glass curtain walls, and Filzfelt privacy panels that beam rays of light through sharing spaces. The natural forms of the dragonfly's wings are seen throughout the space and are integrated in the structure of the building through the formation of space. Natural colors of the dragonfly create the colors found in the materials and finishes of GLGR. Emphasizing energetic hues of blue and yellow in the learning spaces of the first floor and calming and professional tones in the second floor office area.

# FLOORING FINISHES



Trapezoid dropped ceiling details provide sound absorption and grounding over the support staff area and guest waiting zone.

Wayfinding guides people through the space and enhances their understanding and experience.

Interface Net Effect Collection creates traffic circulation patterns similar to the flight pattern of a dragonfly on the floor directing individuals to high-traffic areas such as the Nature Overlook in the southeast corner.

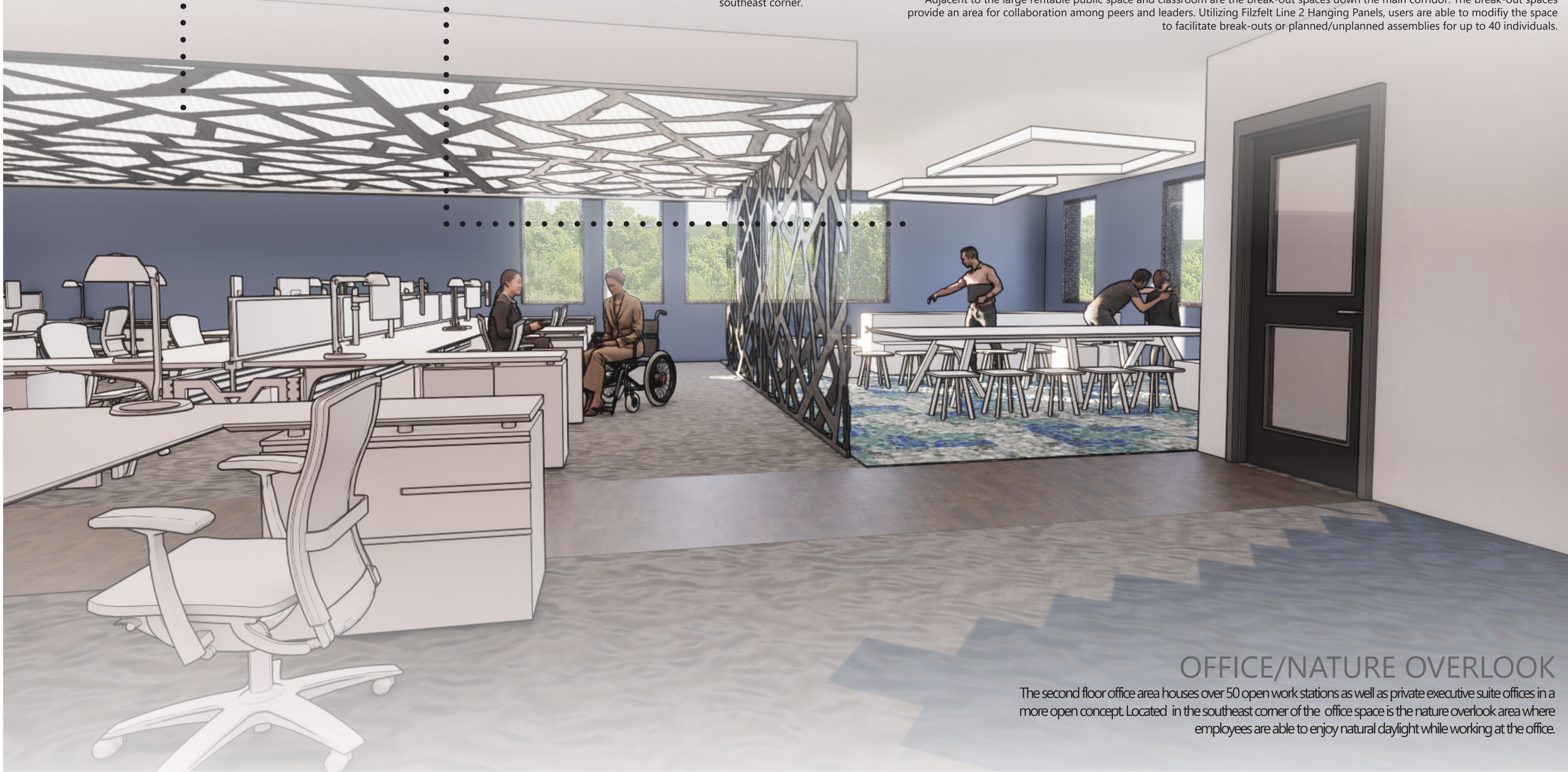


## SUPPORT STAFF AREA

Adjacent to the large rentable public space and classroom are the break-out spaces down the main corridor. The break-out spaces provide an area for collaboration among peers and leaders. Utilizing Filzfelt Line 2 Hanging Panels, users are able to modify the space to facilitate break-outs or planned/unplanned assemblies for up to 40 individuals.

Illuminated ceiling structure reflective of the break room divider is inspired by the iridescence of a dragonfly's wings. This grounding element above the office desks creates lighting and visual interest for work stations.

The Nature Overlook located in the southeast corner of the office overlooking the trails accessed on the east side of the building. This space is meant for assemblies and unplanned interaction among co-workers and their friends/families during company events. This space is meant for office celebrations and community events.



## OFFICE/NATURE OVERLOOK

The second floor office area houses over 50 open work stations as well as private executive suite offices in a more open concept. Located in the southeast corner of the office space is the nature overlook area where employees are able to enjoy natural daylight while working at the office.