



Main Lobby

Girls LEAD Girls RUN

AMERICAN SOCIETY OF INTERIOR DESIGNERS



Knoll

INSPIRATION STATEMENT

One of the most beautiful processes in our natural world is the blooming of a flower. Symbolizing strength, integrity, and passion, flowers are a perfect inspiration for the GLGR organization. Along with the flower itself, which represents the members of the organization, the idea behind what that makes that flower successful will be incorporated as well. Flowers need sunlight, water, pollination, and a positive living environment to grow. All these natural concepts will be implemented within the space, in some way's literal, and in other ways more discrete. The concept will be prevalent throughout the building with the help of color, finish, and furniture selections. The members of this organization will grow into women and professionals throughout their time with the organization. The design will ensure that the young women get a balance between a youthful fun place where they can bloom, and a sophisticated and sleek pre-professional working environment where they can be successful.

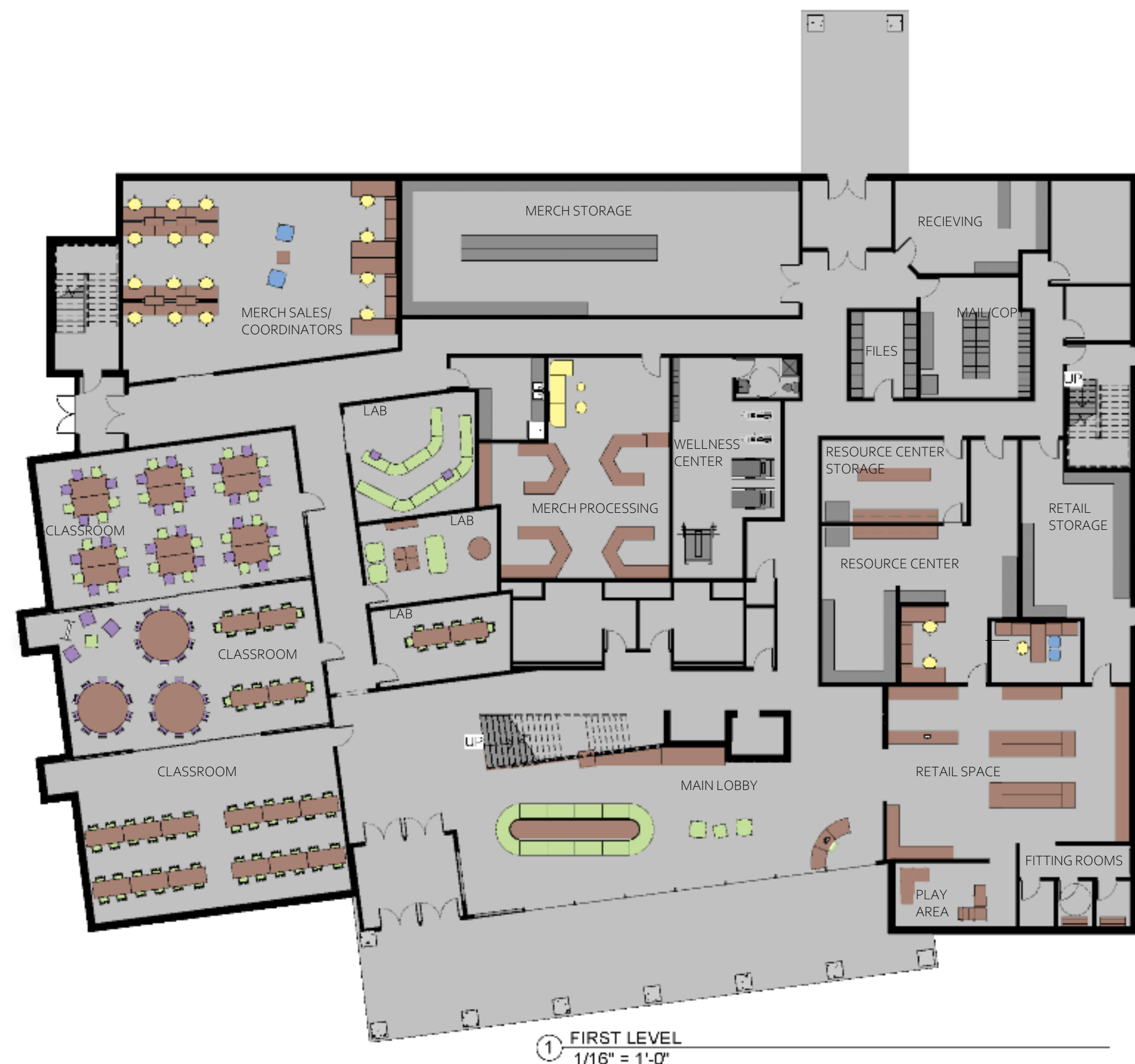


CONCEPT & PROGRAMMING



APPLIED KNOWLEDGE STATEMENT

I learned a lot in designing for this project. The amount of space alone was more than we have ever worked with before. During the space planning phase, I began to understand the reason that designers do criteria and adjacency matrices. As I was figuring out the best way to lay out the building, I constantly looked back to this for reference and quickly found how much this helped as a tool. I also learned a lot about customizing furniture and the overall design on the Revit software. Before this project, I had mainly used Revit for two dimensional purposes and did not understand how to make a design truly stand out in perspective views. Using the program constantly and having the help of the Knoll products to make customizing an easy option played a major part in successfully communicating the design. The challenge was to create a design for an organization called Girls Lead Girls Run, that focuses on the community itself and the people within it. The biggest challenge was to design something that was unique and emphasized the values that the organization stood for. Within the requirements of the project included the desire for a design that incorporated nature and something that connected with the outside environment that surrounded the building. In bringing this concept to life, I chose to implement certain ideas in different spaces. In the learning spaces, the design is bright and colorful as to replicate the flowers themselves. The office and workspaces are where the worker bee concept is emphasized, helping to "pollinate" or make the flowers more successful. In the retail and entry space, sunlight and other components of nature are utilized to make the concept come full circle and introduce a person into the space in a warm inviting way. I also learned a lot about Knoll, the amazing products that they provide, and how they can be customized within the design software's. It made it extremely easy to create a successful design that the desired style for the project thanks to the variety of products and patterns on the Knoll website. It helps immensely to have a three-dimensional version of a design to show to clients and use to really sell the concept.



① FIRST LEVEL
1/16" = 1'-0"

SOLUTION



① SECOND LEVEL
1/16" = 1'-0"



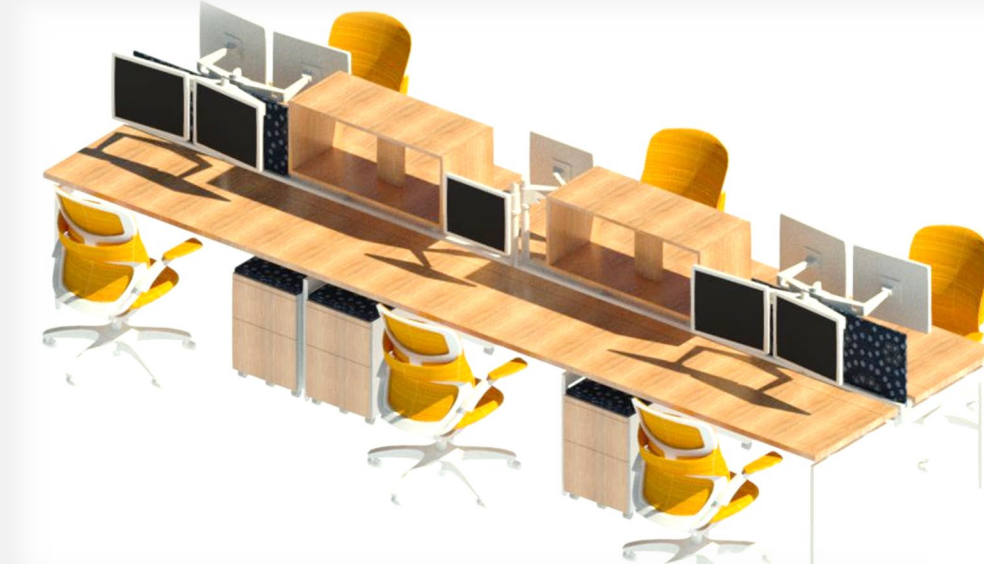
Open Office Area



Executive Office

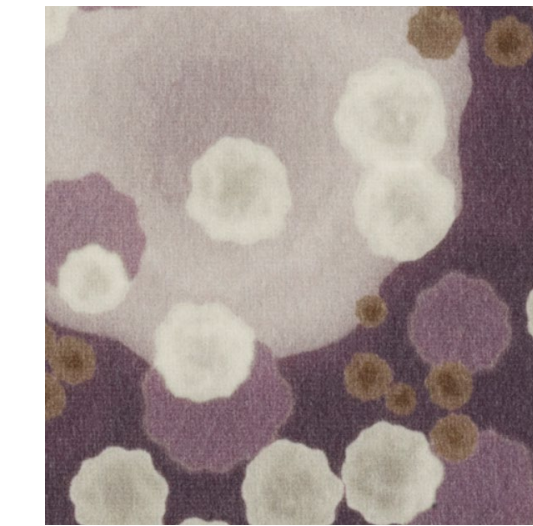
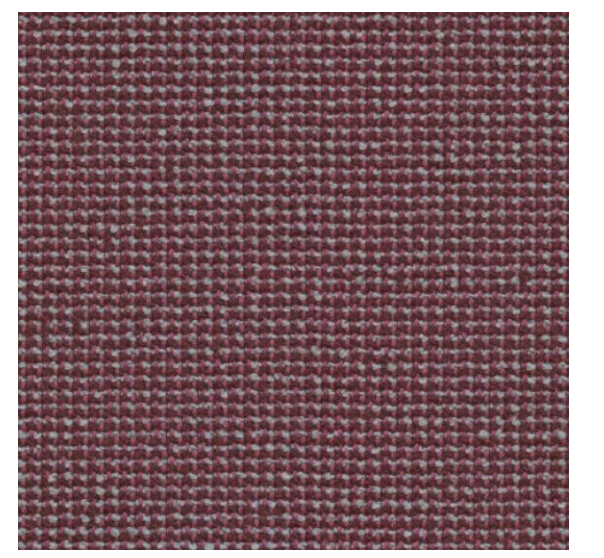
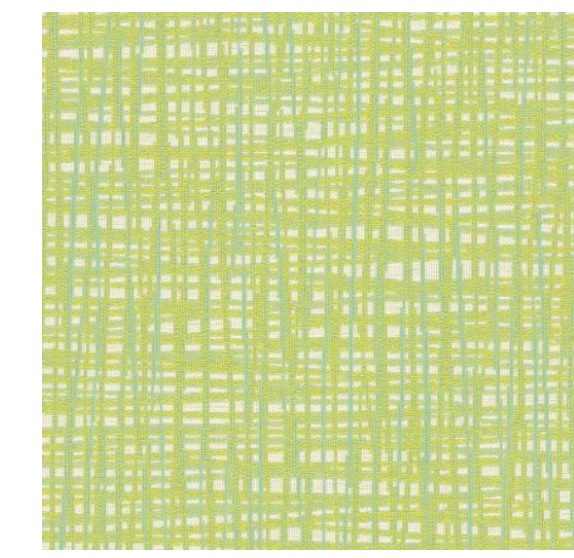


Knoll Lounge Seating



Knoll Benching

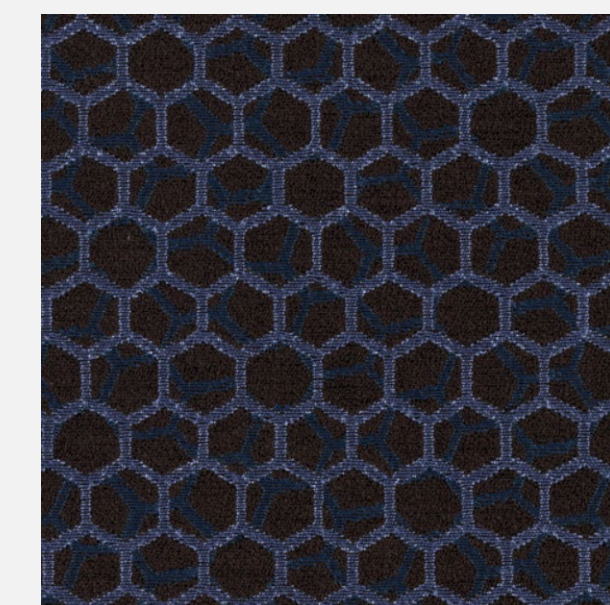
Finish Selections



Knoll Lounge Seating



Fundraising Merchandise Processing Area



F
I
N
I
S
H

S
E
L
E
C
T
I
O
N
S



Classroom