

Cecilia Keiper
cekeiper@purdue.edu
(765) 637-3244
Purdue University
Indianapolis



The Daily Center

Research and Programming

People experiencing homelessness in Indianapolis face many **challenges** when trying to get help. **High eviction rates, low wages,** and a **lack of affordable housing** make it difficult for many to find stable places to live. Laws targeting panhandling and loitering can also lead to increased arrests rather than offering support or solutions. Experts suggest that stronger tenant **protections, legal aid, increased wages,** and more **affordable housing** are necessary steps to help people avoid homelessness and **gain stability.** In response, Indianapolis is working on solutions like the **\$32 million Housing Hub,** which is an effort designed to lower barriers and provide more accessible services. Unlike traditional shelters that may have strict rules around curfews, sobriety, or limited space, the Housing Hub aims to be **welcoming to all,** regardless of their situation. It will offer immediate necessities such as **food, showers,** and **medical care,** as well as long-term support through a housing navigation center where staff assist individuals in finding permanent housing. By **centralizing resources** and **reducing obstacles,** the city hopes to improve the **effectiveness** of its homeless services and create a more compassionate path toward stability.

Within Franklin Township, where the **Wanamaker** neighborhood is located, support for **vulnerable populations** already exists in the form of the **McKinney-Vento Homeless Assistance Act.** This program ensures that students experiencing housing instability **receive meals, transportation, and educational resources** to help maintain **consistency** in their lives. Culturally, Wanamaker holds a deep connection to **Native American history** through the Wanamaker Collection, with over **8,000 photographs** from the early 1900s documenting **Native American life and interactions with settlers.** This historical connection serves as a reminder of the importance of **preserving identity and community** through changing times.

As new spaces like the Housing Hub and The Daily Center are developed, their design must reflect both **functionality** and **the human experience.** Welcoming, **barrier-free entrances** should lead into open common areas that **support movement** without congestion. Natural daylight should fill the space, creating a warm, uplifting environment that fosters well-being. Spaces should feel **open yet connected,** offering visitors both **independence** and **community.** Ultimately, the success of these spaces lies in creating environments that do more than **meet basic needs.** They must honor the **identity, history, and resilience** of the community they serve. By weaving together thoughtful **design, accessibility,** and a **deep understanding of local culture,** these centers can become places of **growth, connection,** and **new beginnings.**

Design Goals

- Revitalize and Reimagine
- Ensure Cultural and Generational Inclusivity
- Create a Functional and Compassionate Space
- Prioritize Comfort through Color and Textures
- Emphasis on City History
- Provide Spaces for all Generations
- Ease of Access
- Allow for Privacy as well as Social Settings

Mood Board



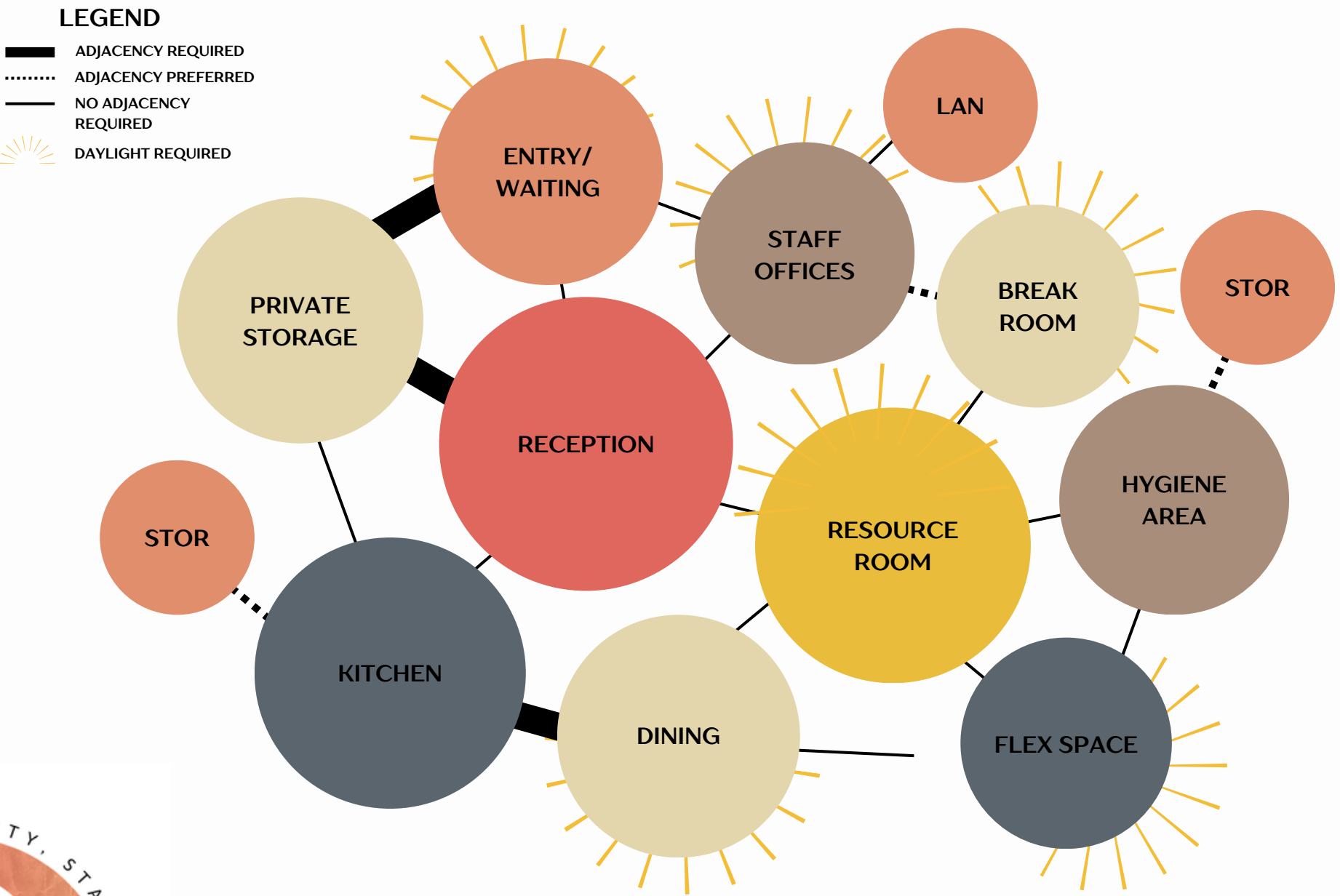
Concept Statement

The Daily Center will revitalize an older building into a warm, **inclusive** space where individuals and families navigating life transitions can find **support, resources**, and a path to a better future. Rooted in the town’s **history** and shaped by the resilience of its people, the Center will honor the community’s **identity** while looking forward. With a focus on **cultural** and **generational inclusivity**, the design ensures that all visitors, from young adults to seniors, feel **valued, comfortable**, and **inspired**.

The space will offer a variety of services, including areas for internet and phone use, as well as classrooms for skill-building and **personal development**. Relaxing lounge areas will provide spots for social interaction or peaceful solitude. Essential amenities like laundry, showers, and secure storage will ensure visitors’ daily needs are met with dignity. On-site counseling services will provide **emotional and practical support** to help individuals cope with their challenges. A thoughtfully organized donation area will simplify **access** to food and clothing while providing temporary or long-term mail storage that offers visitors a sense of **stability**.

By weaving the **community’s story** into the design and purpose of the space, The Daily Center will be a hub for **growth, empowerment**, and **connection**. It will serve as a place where individuals of all ages can access the **support** and **opportunities** needed to move forward into the next chapter of their lives—while staying **connected** to the town they call home.

Bubble Diagram



Branding Process



The logo is inspired by Native American **heritage**, honoring their **history, traditions**, and **deep connection** to the Wanamaker area. Early design elements reflect this legacy with symbolic patterns, and natural colors.

As it evolved, the logo became a symbol of **identity**, representing **unity, strength**, and the spirit of the **community**. Its refined design creates a bold emblem that fosters pride and belonging.

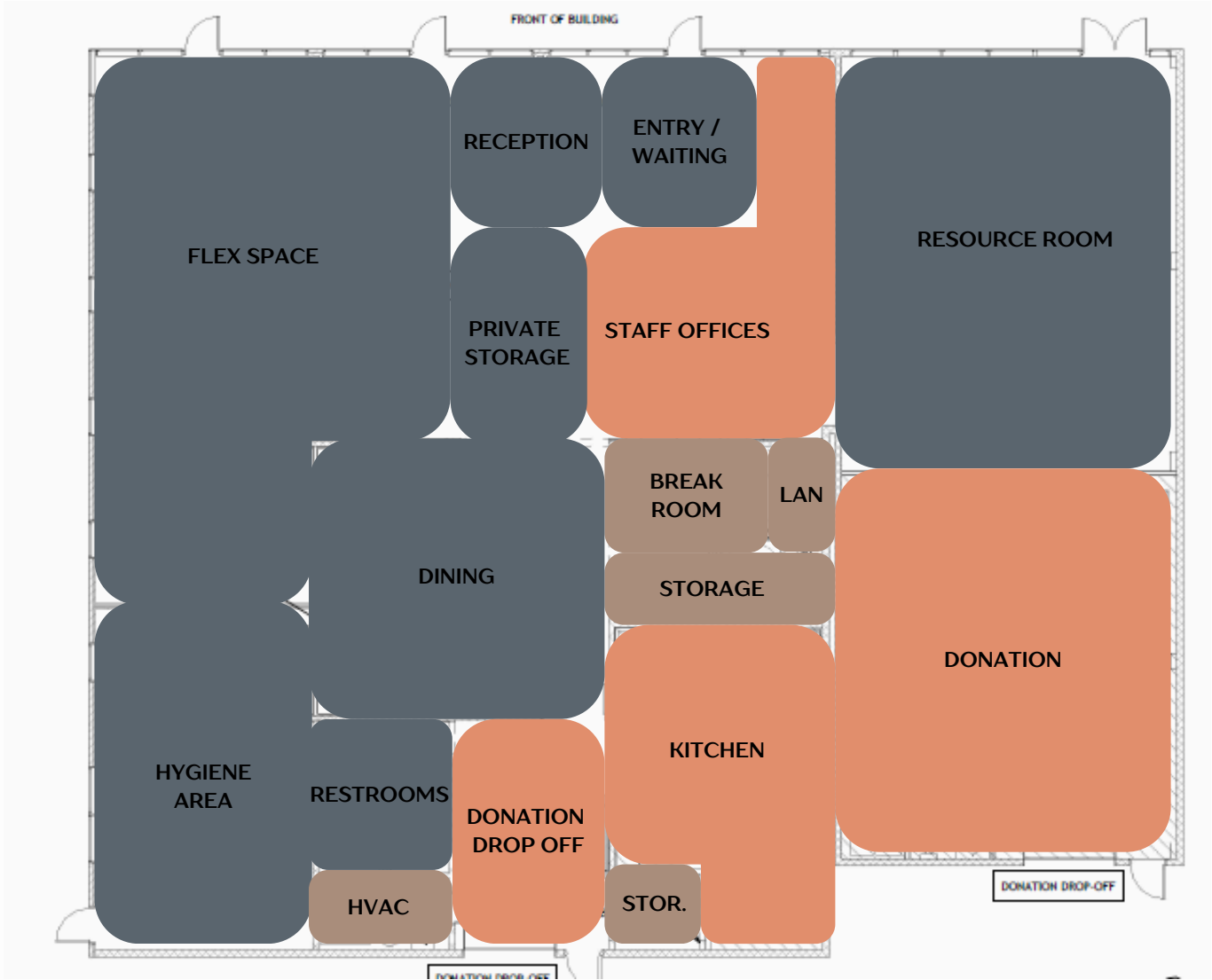
In its final form, the rising sun on the horizon adds a sense of **hope**, symbolizing **new beginnings** and a bright future. A thumbprint woven into the design reinforces **identity**, reminding us to stand strong in our journey, and **overcome challenges** with **resilience** and **determination**.

Criteria Matrix

CRITERIA MATRIX AND ADJACENCY MATRIX		SQUARE FOOTAGE NEEDS	DAYLIGHT	PUBLIC ACCESS	SPECIAL EQUIPMENT	NOTES
	ENTRY / WAITING	200 SQFT	H	Y	Y	INFORMATION BOARDS; SEATING FOR 6 PEOPLE
	RECEPTION	150 SQFT	H	Y	Y	COUNTER SPACE FOR PRINTER AND FILES
	PRIVATE STORAGE	300 SQFT	N	Y	Y	STORAGE LOCKERS AND MAILBOXES FOR 50 PEOPLE
	RESOURCE CENTER	1000 SQFT	H	Y	Y	BENCHING STATION, SHELVEING FOR LIBRARY, COFFEE AND SNACK BAR, PHONE BOOTHS
	STAFF OFFICES	650 SQFT	H	N	N	(2) DESK AND 2 CHAIRS, (2) OPEN DESKS
	BREAK ROOM	150 SQFT	H	N	Y	SEATING FOR UP TO 4 PEOPLE, COUNTER SPACE W/ MINI FRIDGE, MICROWAVE, AND SINK
	FLEX SPACE	1,000 SQFT	H	Y	N	SEATING FOR 25 PEOPLE, CHARGING OPTIONS, SOUND SYSTEM / ACOUSTIC
	DINING	450 SQFT	M	Y	Y	VARIETY OF SEATING FOR 15 PEOPLE, DISPOSAL AREA, COUNTER SPACE FOR MEAL PREP
	HYGIENE AREA	750 SQFT	N	Y	Y	LAUNDRY AREA: 4 WASHERS, DRYERS, FOLDING TABLES
	STORAGE	250 SQFT	N	N	N	
	LAN	50 SQFT	N	N	Y	LOCATE IN DRY AREA
	KITCHEN	465 SQFT	L	N	Y	COMMERCIAL KITCHEN
MINIMUM SQFTG: 5,415 SQFT						
+ 25% CIRCULATION: 1,353.75 SQFT						
TOTAL SQFTG NEEDED: 6,768.75 SQFT						
TOTAL SQFTG AVAILABLE: 7,180 SQFT						
		LEGEND				
		● REQUIRED ADJACENCY				
		○ CLOSE + CONVENIENT				
		◇ NO REQUIRED ADJACENCY				

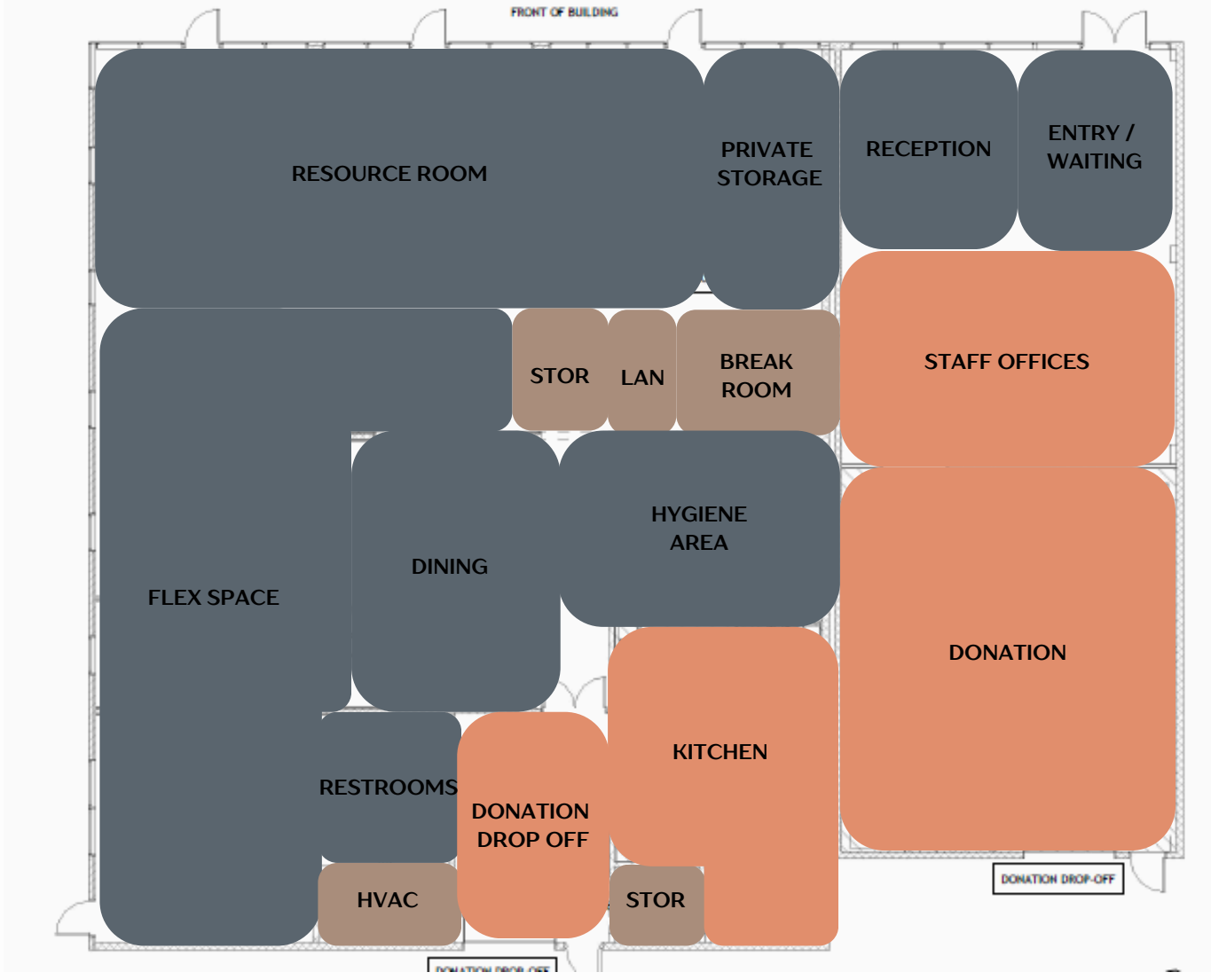
Block Diagrams

PUBLIC WORK PRIVATE



Option 1

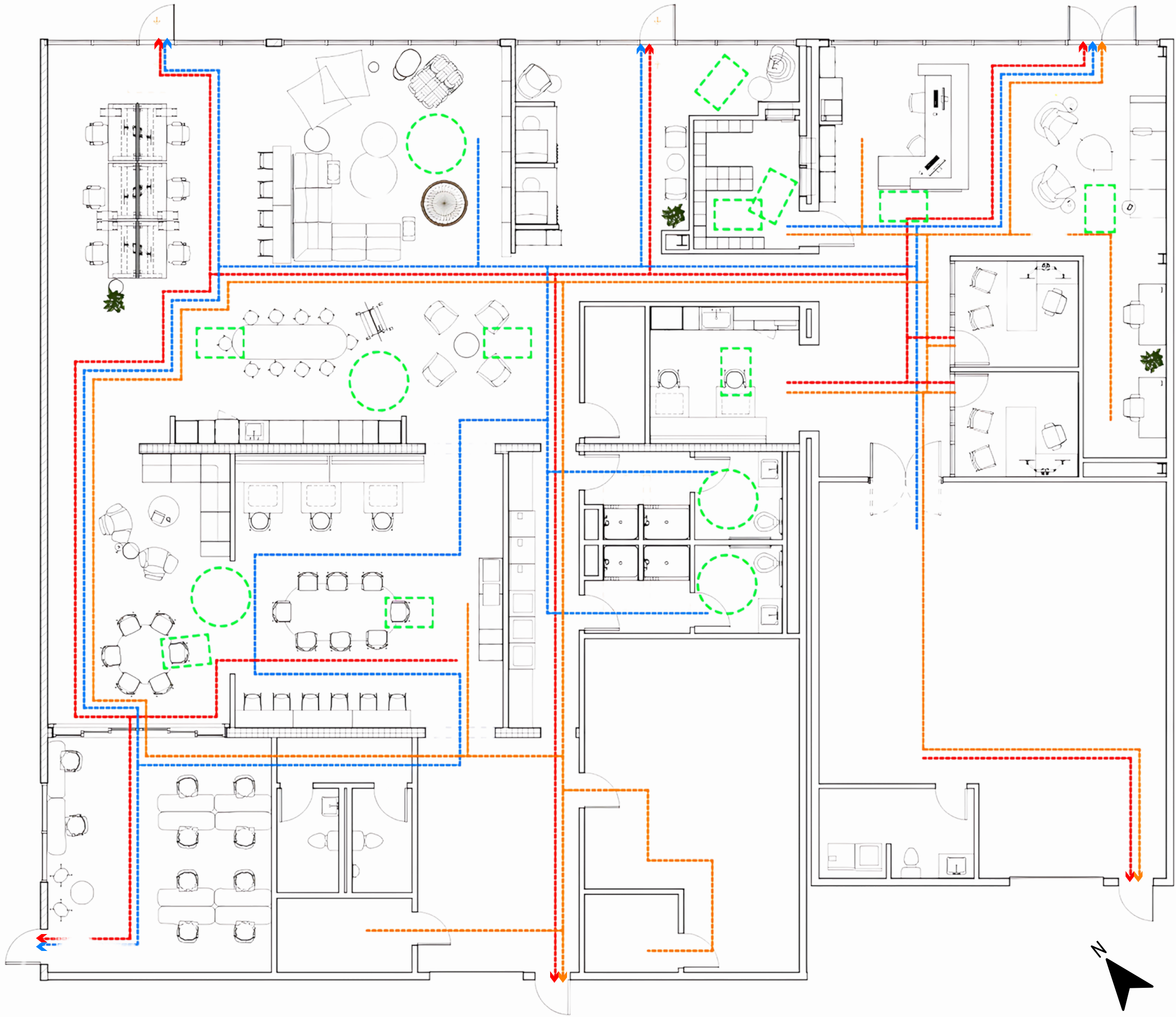
Option 1 prioritizes accessibility, efficiency, and a welcoming atmosphere. A centralized reception and entry area serve as the heart of the space, ensuring easy access for both staff and visitors while fostering a sense of connection and security. The dining area is strategically placed near the kitchen for convenience, allowing for smooth meal service and efficient operations. Additionally, the dining space can be opened into the adjacent flex space, creating a versatile environment that can accommodate larger gatherings, community events, or multi-purpose activities. This layout ensures a natural flow between key areas, enhancing both functionality and user experience.



Option 2

Option 2 offers a well-connected layout that balances accessibility with privacy. While the reception area is less centralized, it still provides easy access to the resource room and staff offices, ensuring visitors can quickly find support. The dining area remains flexible, opening into the adjacent flex space for larger gatherings and events. This option enhances privacy by incorporating more alcove spaces for private booths within the flex space, creating opportunities for quiet conversations or focused activities. A key advantage of this layout is the centralized hygiene area, which is easily accessible from all parts of the center rather than being tucked away, ensuring convenience and dignity for all visitors.

Code Plan

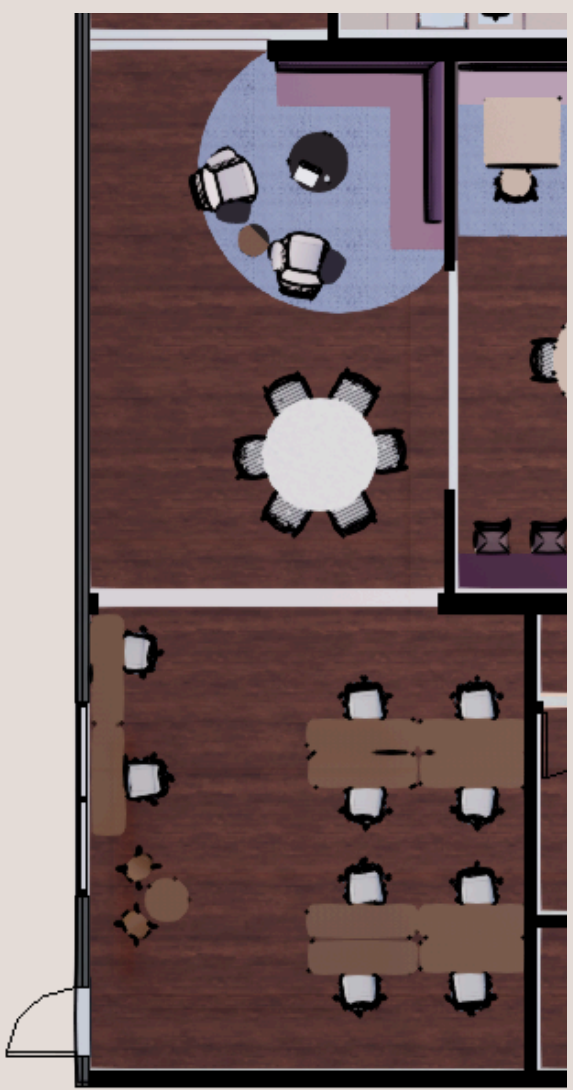


Legend

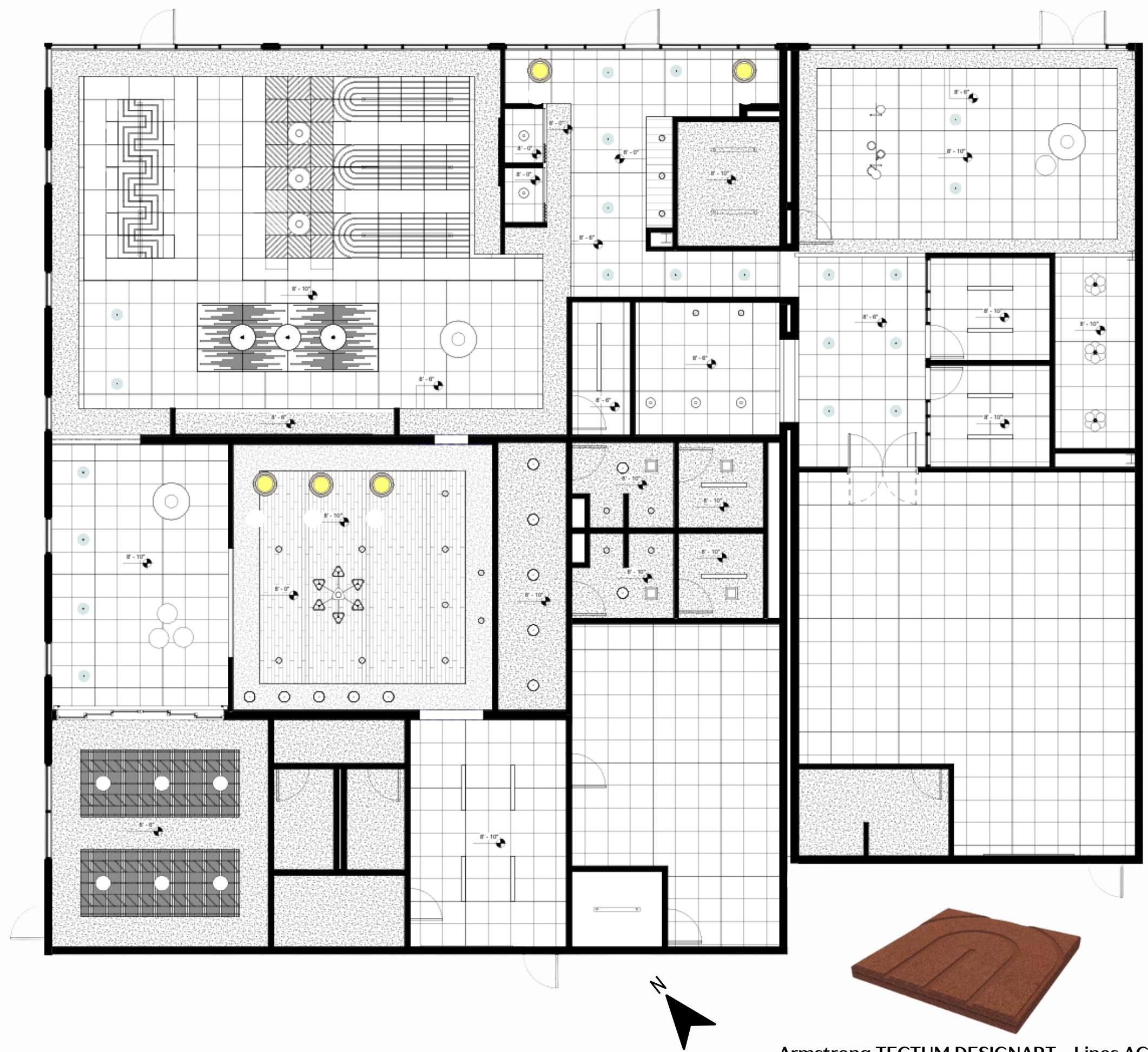
- STAFF PATH OF TRAVEL
- PATRON PATH OF TRAVEL
- EGRESS PATH
- ADA ACCOMODATIONS

Furniture Plan

Flex Space - Option Two



Reflected Ceiling Plan



Lighting Legend

L1 Lumenwerx Ecana 6" Downlight, 3500k

L2 PrentaLux Decorative High Bay, 3500k

L3 Zaneen Fiji Total Eclipse of the Heart, 3500k

L4 Lightology Nova Chandelier, 3500k

L5 PrentaLux 415 Series 3DP Pendant, 3500k

L6 Lumenwerx Cava Recessed Linear 72", 3500k

L7 PrentaLux 210 Series 3DP Pendant, 3500k

L8 Zaneen Arctic Circle, 3500k

L9 Lumenwerx Cava Round Open, 3500k

L10 Zaneen Gio Suspension 1/4", 3500k

L11 Zaneen Spider, 3500k

L1

L2

L3

L4

L5

L6

L7

L8

L9

L10

L11

Armstrong TECTUM DESIGNART - Lines ACT

Perspectives and Furniture Selections



Mayer Fabrics upholstery with Steelcase Furniture. Steelcase is dedicated to sustainable products and net zero



Sherwin Williams Superpaint with antimicrobial and air purifying technology



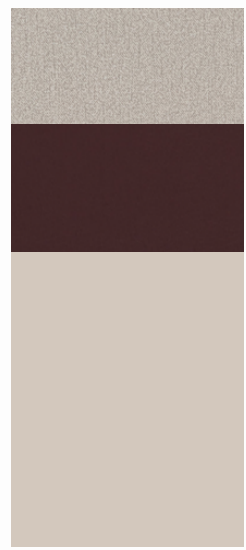
Resource Center - A

Flex Space



Flex Space - B

Resource Center



Mayer Fabrics upholstery with Steelcase Furniture. Steelcase is dedicated to sustainable products and net zero



Fineline Millworks Panel System

Sherwin Williams Superpaint with antimicrobial and air purifying technology



Perspectives and Furniture Selections



Dining Space - C

Dining and Break Room

Entry, Reception, and Private Offices



Entry and Reception - D

Sherwin Williams Superpaint with antimicrobial and air purifying technology



Mayer Fabrics upholstery with Steelcase Furniture. Steelcase is dedicated to sustainable products and net zero