



ASID STUDENT COMPETITION 2025

Katherine Rudini

Purdue University

(203) 833 2855

Krudini@purdue.edu





## Origin Daily Center

Wanamaker, IN



# RESEARCH

The research provided a strong foundation for addressing homelessness in Indianapolis by emphasizing **recovery**, **self-sufficiency**, and **community engagement**. Economic and political analyses highlighted disparities in income and housing accessibility, reinforcing the need for a space that fosters stability and empowerment. Trauma-informed design principles from HOK and Gensler influenced key design strategies, such as **clear sight-lines**, **controlled access points**, and **biophilic elements** like natural light and greenery, all aimed at creating a **safe, dignified**, and **healing environment**.

Case studies on community-driven design, including Studio Gang’s Brooklyn Community Center and Studio La’s Moselle and Madon Headquarters, further shaped the project’s goals by showcasing the importance of **sustainability**, **adaptive reuse**, and **programmatic flexibility**. Participatory research in Wanamaker revealed a **connection to gardening**, which inspired the **cultural garden metaphor concept**. Gardening is not only a practical tool for sustainability but also a symbol of **resilience**, **tradition**, and **community identity**. By integrating these insights, the project transforms green spaces into healing environments where individuals can reconnect with nature, share knowledge, and rebuild a sense of belonging.

## PROJECT GOALS

 **COMMUNITY IDENTITY & LANDMARK**

 **SUSTAINABILITY**

 **SUPPORT EDUCATION & PERSONAL DEVELOPMENT**

 **FLEXIBILITY & LONGEVITY**

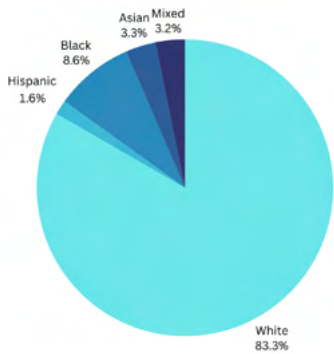
 **CREATE A SAFE ENVIRONMENT**

## SITE CONTEXT

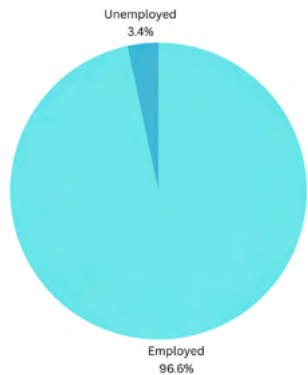
- **Site**
- **Street**
- **Business**
- **Residential**
- **Walking**



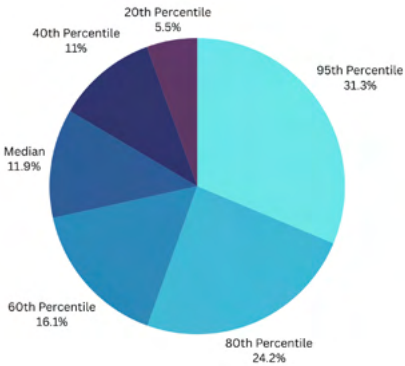
## DEMOGRAPHICS



RACE & ETHNICITY



EMPLOYMENT



HOUSEHOLD INCOME

# THE CULTURAL GARDEN

## METAPHOR

### CONCEPT STATEMENT

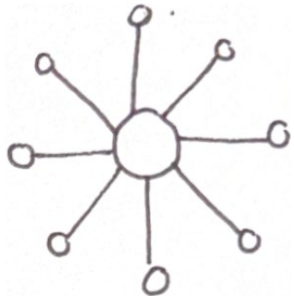
The Cultural Garden celebrates the diverse **immigrant communities** that have shaped Indianapolis, drawing inspiration from the **universal necessity** of vegetables, an accessible and nourishing staple across all cultures. Just as each major **geographical region** has significant vegetables that reflect its traditions, this space metaphorically blends them, much like a rich vegetable soup, symbolizing the city’s cultural diversity. The design incorporates varied forms, layered textures, and a **vibrant yet balanced** color palette to represent the distinct contributions of different cultures while maintaining a cohesive and **inviting environment**. Communal spaces serve as gathering points where people can connect, share, and grow together, reinforcing the idea that a thriving community, like a well-planned garden, is built on both **individuality and unity**. Inspired by the **structured nature of gardens**, the space is divided into **three key phases: Root**, representing stability and a strong foundation, expressed through durable materials like tile and preserved architectural elements; **Grow**, symbolizing collaboration and progress, conveyed through linear yet complex forms; and **Flourish**, reflecting shared success through intricate, beautiful design elements.

Color plays a fundamental role in reinforcing the garden metaphor and enhancing the user experience. **Extensive research guided the selection of colors**, ensuring they support both function and emotion. Certain spaces and vegetables alike **need different levels of light** to thrive, which is aligned in the design through location and color. By integrating these elements, the Cultural Garden becomes a living reflection of cultural connection, growth, and shared community.

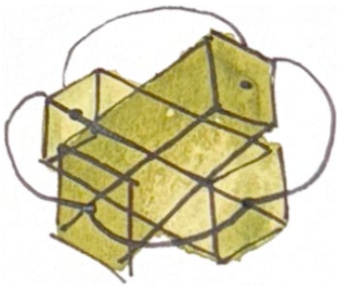
PARTI DIAGRAMS



2D SPATIAL ARRANGEMENT



3D SPATIAL ARRANGEMENT



MOOD BOARD





# BRAND IMAGE

SIGNAGE



LOGO



MERCHANDISE



## BRAND NAME: ORIGIN

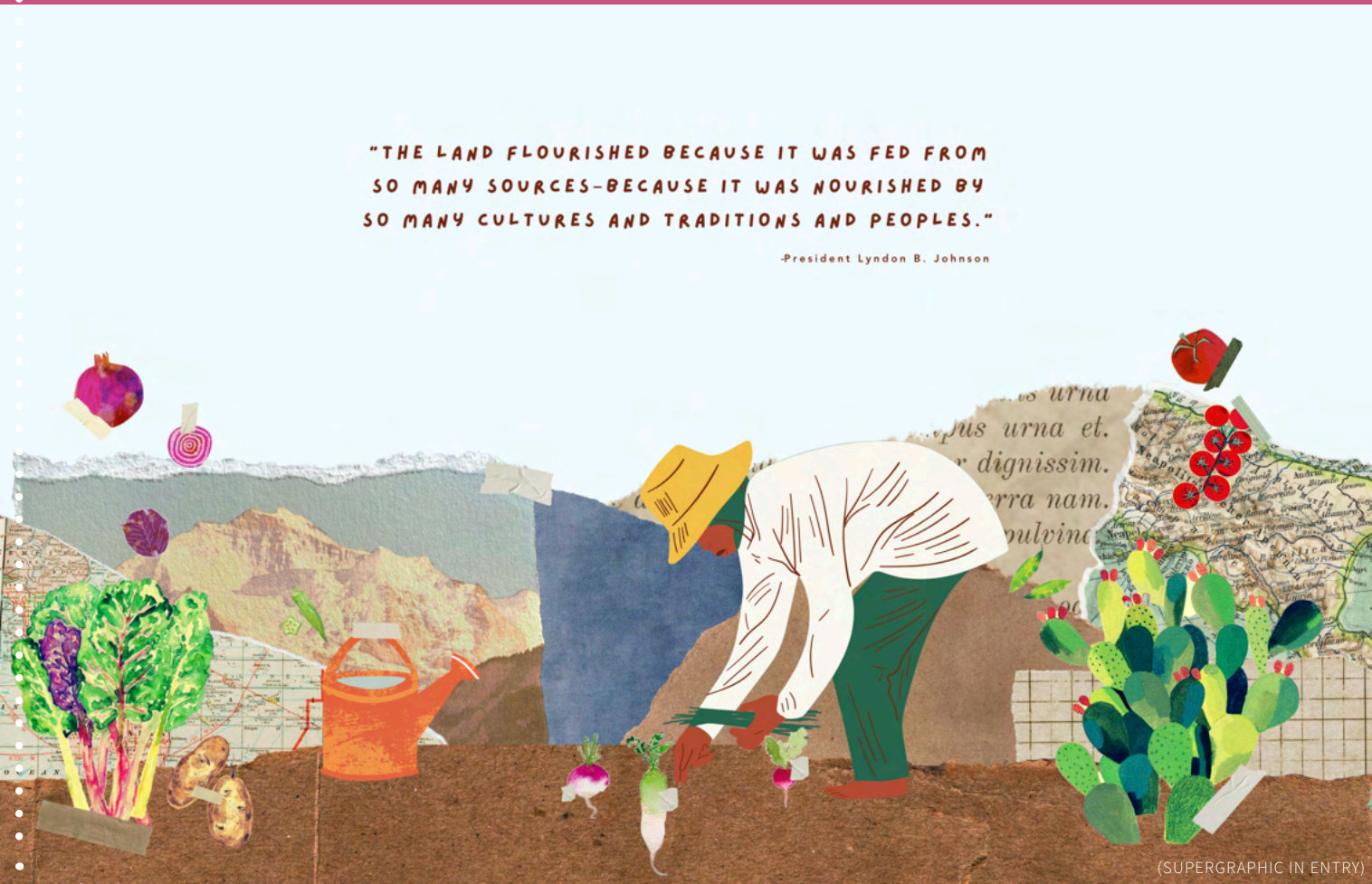
The word **Origin** emphasizes beginnings, ancestry, and cultural roots

Origin is a **universal** concept that resonates across cultures and languages, making it inclusive and representative of a **diverse audience**.

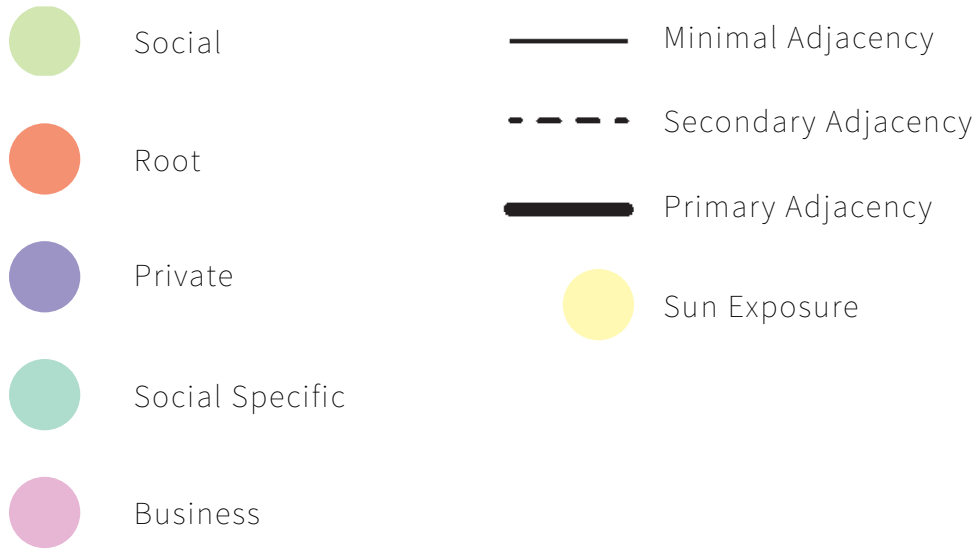
At just one word, it's concise and **simple** to use in marketing materials, signage, and conversations.

"Origin" is not tied to trends or fads, giving it a **timeless** quality that can grow with the brand.

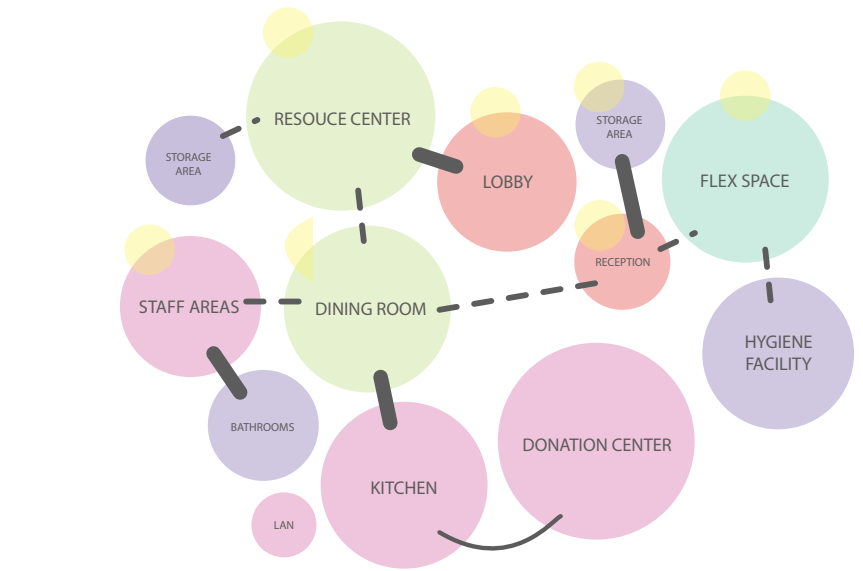
The word connects to **growth, beginnings**, and the **natural world**, making it ideal for the cultural garden concept.



# SPACE PLANNING



The chosen layout optimizes **flow, functionality, and daylight** by strategically placing key spaces for accessibility and interaction. Primary adjacencies connect essential services like the kitchen, dining, and resource center, ensuring efficiency, while social spaces receive **optimal sunlight** to create a welcoming atmosphere. This design enhances navigation, privacy, and community engagement, fostering a **strategic** and adaptable environment. In addition, the chosen plan features a special room for 1-on-1 therapy or life coaching, ensuring this space will help its occupants reach the **“flourish”** stage of their development.







# FURNITURE & FIXTURE PLAN



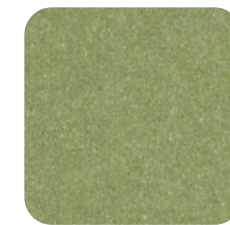
1.



2.

- 1 Microwave & Mini fridge
- 2 Printer
- 3 Movable Screen with TV & Info Board
- 4 Shelving for Books & Games

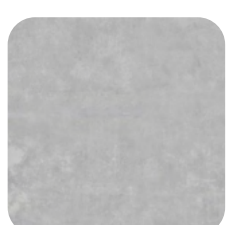
- 5 Folding Table
- 6 Washers
- 7 Dryers
- 8 Snack Bar



**ARMSTRONG FLOORING**  
Vinyl Floor Tiles: Little Green



**Mohawk Industries**  
24" x 24" Carpet Tile

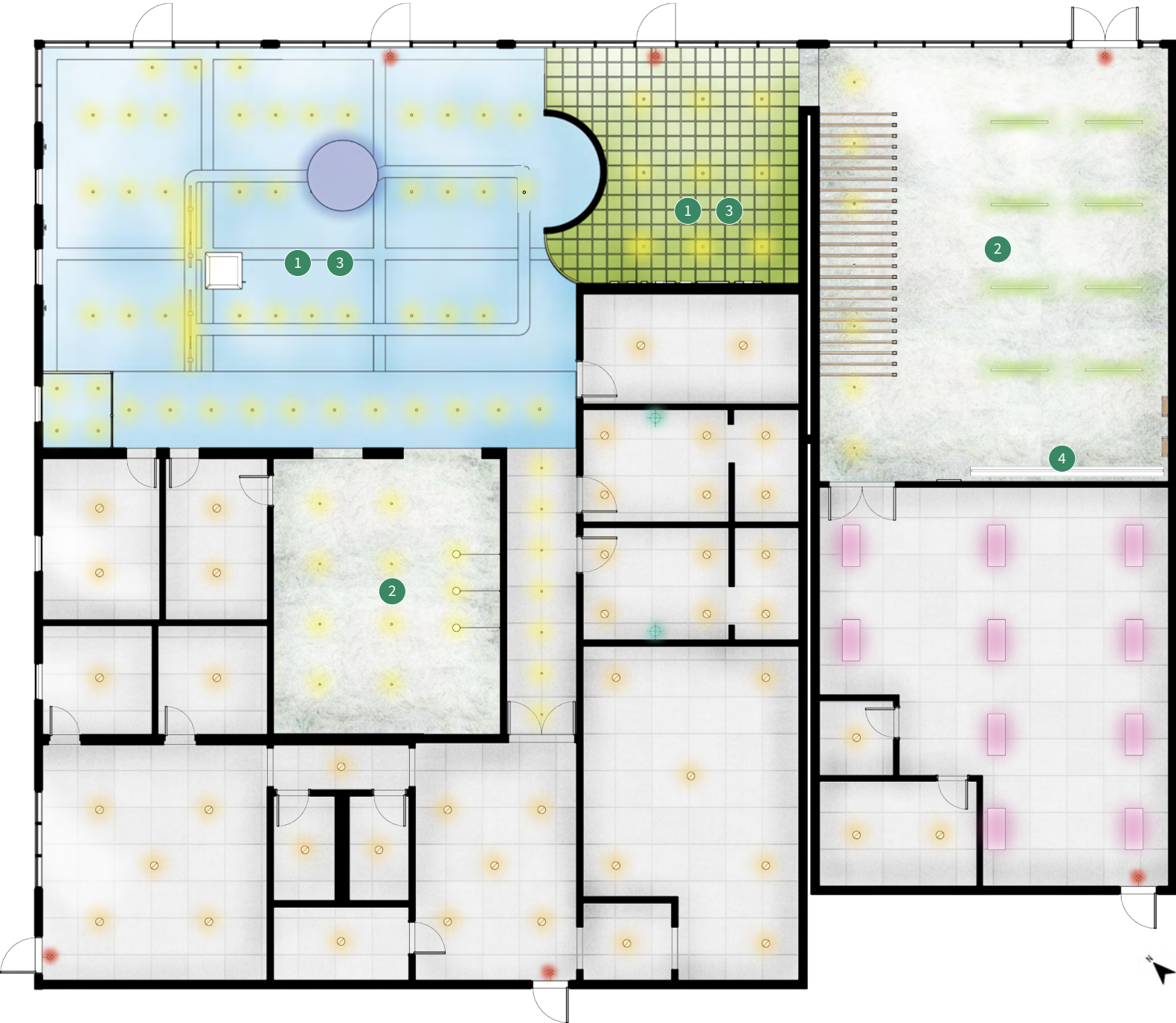


**Existing**  
Concrete Floor

The furniture plan of the daily center is thoughtfully designed to enhance the experience for both occupants and staff. A **combination** of built-in and flexible furniture creates a sense of **structure** while maintaining **adaptability**. This strategic balance not only optimizes the space but also prioritizes user safety by **eliminating** scattered chairs that could pose tripping hazards or obstruct clearances.



# LIGHTING PLAN

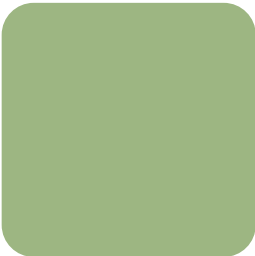


- All **Ceilings 10'** Unless Noted
- All **Ceilings ACT** Unless Noted
- All **Lights are LED**
- All **Lights are Motion Sensor**

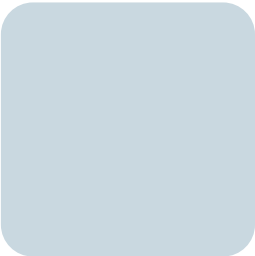
- 1 10' Ceiling with a 1' Dropped Grid
- 2 Acoustical Plater
- 3 Paint - Spec. Below
- 4 Projector, Sound System, Screen



BASWA  
Acoustical Plaster

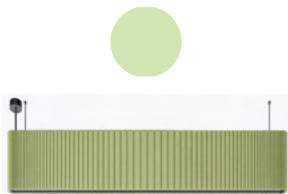


Sherwin-Williams  
SW 6734 Mesclun Green



Sherwin-Williams  
SW 9144 Moonmist

This lighting plan prioritizes functionality, safety, and sustainability, integrating high-**CRI (90-95)** lighting to enhance color accuracy and **visual comfort**. Egress lighting ensures clear **wayfinding**, while motion-activated security lighting enhances **safety**. Strategic fixture placement maximizes illumination in high-use areas, with acoustic pendants improving **sound quality**. Since windows couldn't be added, social spaces are positioned near existing windows, **optimizing natural light** exposure. Plant installations enhance indoor **air quality**, while occupancy sensors and dimmable LEDs support **energy efficiency**. This approach creates a visually engaging, health-conscious, and sustainable environment.



Acoustic Pendant



6" Recessed Can



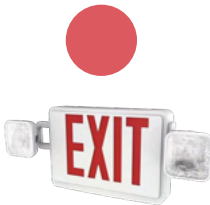
Vanity Sconce



2'x4' Recessed Strip



Ceiling Surface Mount



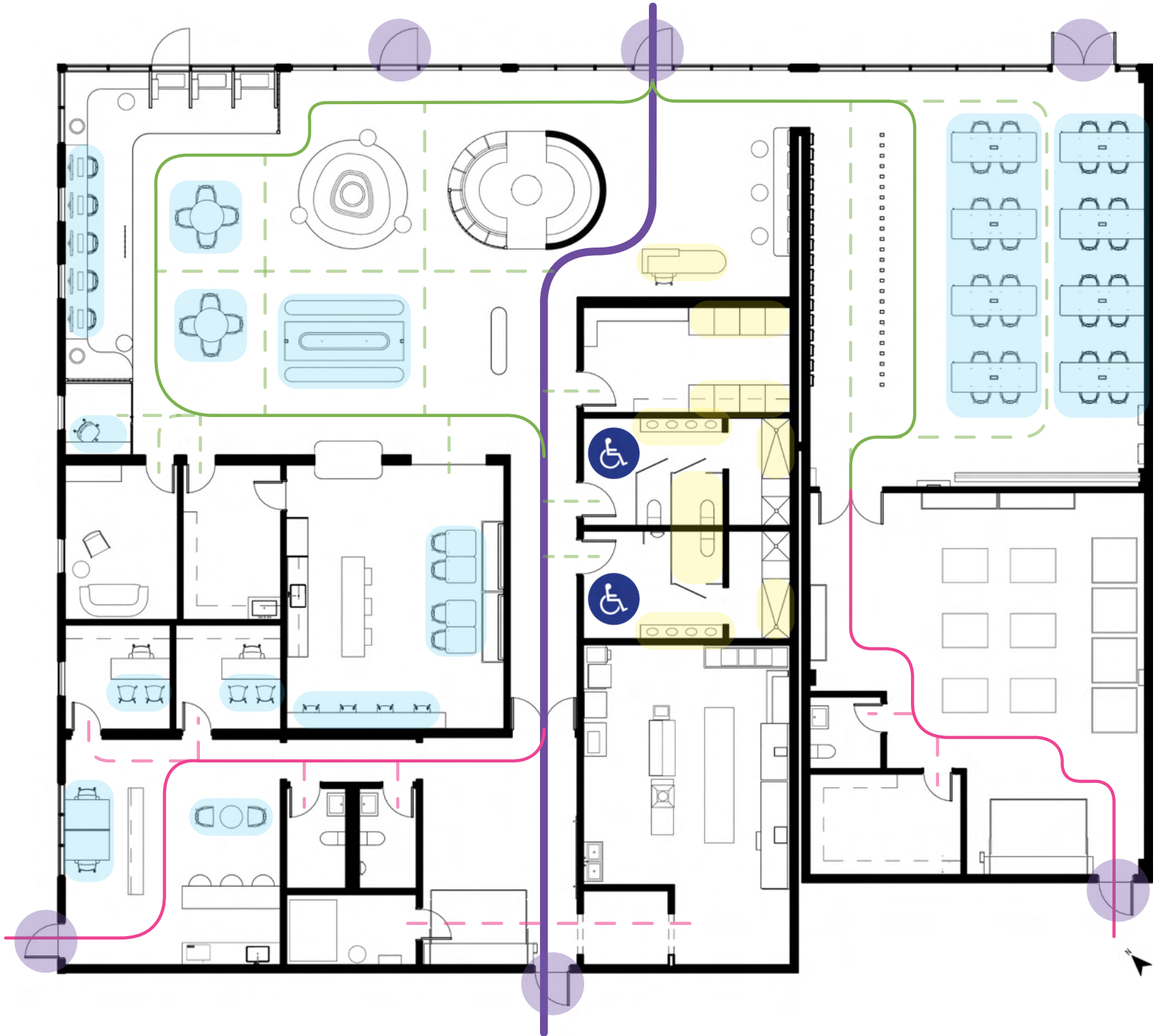
Emergency/Egress



4" Surface Mount Can



# CODE PLAN



- Egress Door
- Patron Main Path
- Patron Secondary Path
- Staff Main Path
- Staff Secondary Path
- Main Egress Path



The circulation and code plan ensures clear, efficient movement with **5-foot-wide hallways** for accessibility and unobstructed **egress routes** for safety. **Main paths** provide direct access to key spaces, while **secondary** staff and patron paths branch out. Based on occupancy load & code **research**, the plan includes a correct number of **egress points and water closets**. All rooms are **ADA-compliant** with wheelchair turning space, except for private offices, and the staff bathrooms, creating a safe, accessible, and well-organized environment.



# DINING ROOM

This design embodies **Root, Grow, Flourish**: grounded elements with durable materials anchor the space, climbing forms create movement, and lush greenery and suspended forms draw the eye upward, ensuring a dynamic and immersive visual journey.

## Mayer Fabrics

Dijon

Kelp

Bluebird

Bone

Sage

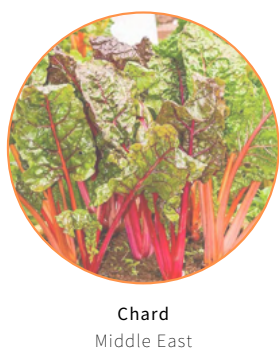
Iceberg

Bittersweet

Blush

## Sherwin-Williams

Lantern Light



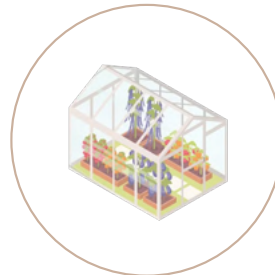


# FLEX & RESOURCE ROOM

Adjacent to the reception, the flex space includes mailboxes for **security**. Furthermore, adjustable **ADA-compliant** tables with built-in **outlets** aid accessibility, while a **panel system** allows vertical expansion. Low-VOC paints, natural materials, and plants improve **indoor air quality**. Colors are bold and varied, but subdued with a light blue painted exposed ceiling paint and wood to maintain calmness.



Daikon Radish  
Asia



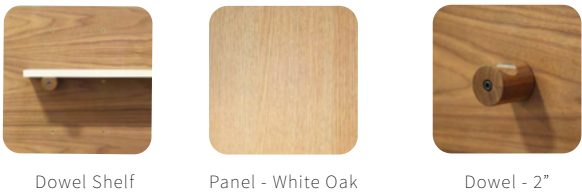
Greenhouse Form  
Visual Sightlines & Privacy



## Sherwin-Williams



## Fine Line Millworks



Reflecting the Sky  
Calm & Healing



Trellis Form  
Support Growth

