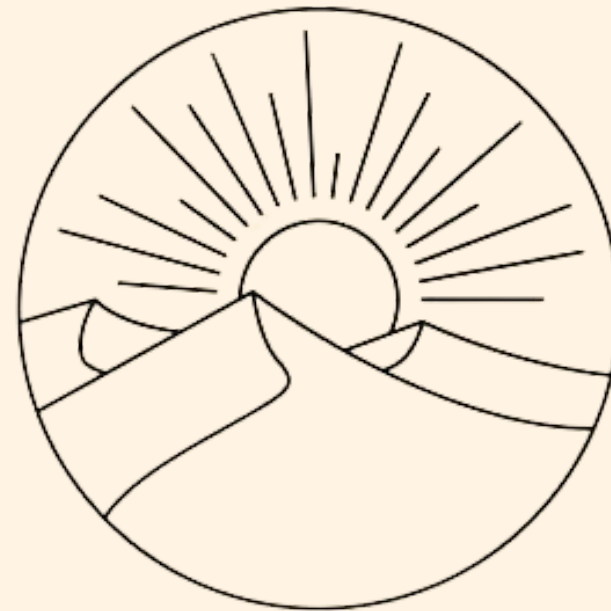


LAUREN REED

PURDUE UNIVERSITY INDIANAPOLIS

LPREED@PURDUE.EDU

260-579-8992



THE DAILY CENTER

Every sunrise carries hope

RESEARCH SUMMARY

DEMOGRAPHIC

In recent years, the homeless population in Indianapolis has shown diverse and evolving demographics. Among those counted, 62% were men or boys, while one in four were individuals aged 55 or older. Nearly another quarter were children or young adults under the age of 24. Remarkably, about nine in ten individuals experiencing homelessness stated that they were living in Indianapolis at the time they became homeless, with one-third citing job loss as a primary factor. Additionally, over half of the homeless population identified as Black, a disproportionately high percentage considering that African Americans make up approximately 30% of Marion County's residents. These statistics highlight the need for shelters to provide safe, inclusive, and supportive environments for individuals and families, while also addressing the unique challenges posed by economic instability, age diversity, and systemic disparities.

ATMOSPHERE

The overall design and atmosphere of a shelter play a crucial role in residents' experiences. Incorporating natural light, secure environments, and thoughtful amenities can make a significant difference. Security is paramount; the facility must be safe to create a supportive environment. To create a safe and supportive environment, shelters must incorporate flexible spaces and activities that cater to diverse needs. This includes providing access to computers for job searches, recreational activities, and structured group sessions, such as support groups and skills training classes. Additionally, secure mail delivery, storage space for personal belongings, and areas for personal hygiene are critical components that help residents maintain their dignity and focus on their recovery. Furthermore, creating spaces that feel uplifting and homely can inspire hope and a sense of normalcy among residents. A people-centric approach that shows respect and understanding for individuals' circumstances fosters a supportive community where residents can thrive, learn new skills, and rebuild their lives with dignity and confidence.

MESSAGE

A well-functioning shelter program incorporates several essential elements that contribute to the well-being and rehabilitation of its residents. A people-centric culture prioritizes how individuals wish to live their lives and encourages them to thrive. It is crucial to demonstrate to residents that they are loved, respected, and "normal," acknowledging that they are simply going through a challenging period.

PSYCHOLOGICAL EFFECTS OF SUNLIGHT

The sun has a remarkable impact on human well-being, backed by significant data and rich symbolism. Sunlight exposure helps regulate serotonin levels, improving mood and reducing depression risk by 26%. Natural light has been shown to increase workplace satisfaction and productivity by 15%, further demonstrating its influence on daily life. Bright, sunny environments also improve cognitive function, boosting focus and memory retention by up to 20%, while reducing stress and enhancing creativity.

Symbolically, the sun represents hope, renewal, and vitality, with its daily rise serving as a universal metaphor for new beginnings and resilience. Cultures worldwide have long associated the sun with life, optimism, and growth; its light dispels darkness and fosters a sense of safety. Its constant cycles remind us of life's potential for renewal and continuous opportunity. Whether through its physical effects or its powerful message, the sun remains a vital force for health, positivity, and inspiration, connecting humans to both nature and the promise of brighter horizons.

DESIGN GOALS



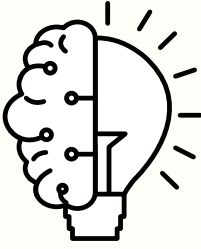
UPLIFTING

Inspire positivity, foster hope, and encourage personal growth and resilience..



CULTURAL

Foster shared values, traditions, and practices that shape the identities and interactions of individuals.



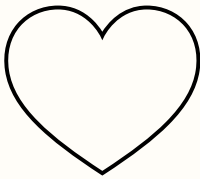
INSPIRING

Ignite creativity, fuel ambition, and motivate individuals to reach their highest potential.



APPROACHABLE

Invite openness, foster easy interactions, and ensure that individuals feel heard and understood



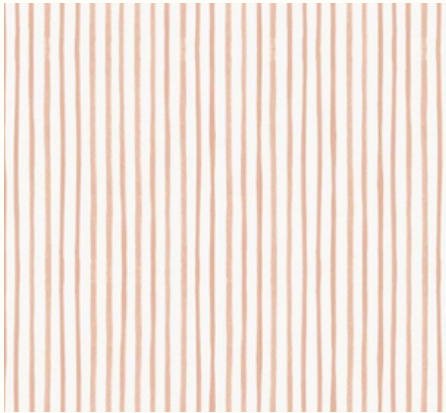
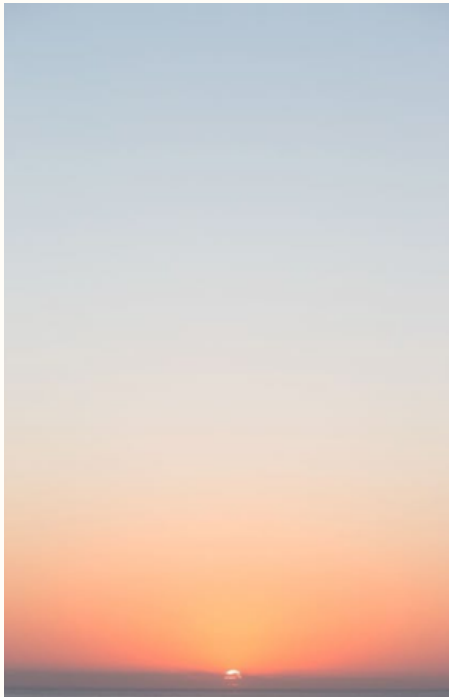
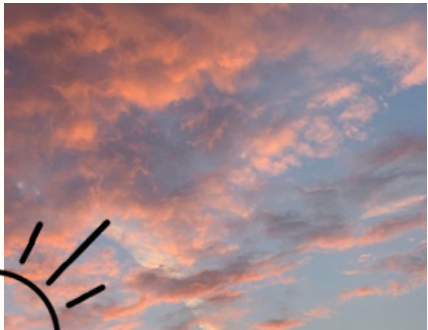
SAFE & SECURE

Ensure protection from harm, foster trust, and provide stability for individuals to thrive.

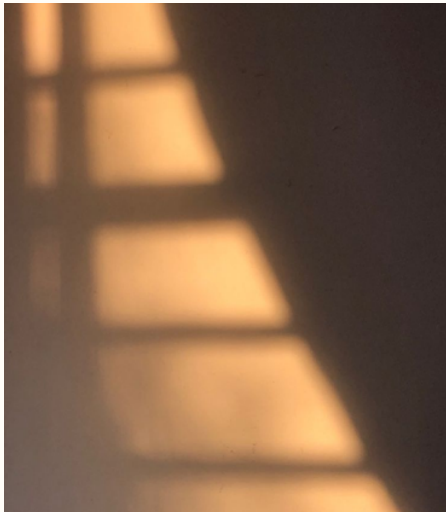
CONCEPT STATEMENT

The design of the day center for the homeless draws inspiration from the life-giving and hopeful essence of the sun, serving as a beacon of **renewal** and **positivity**. The architectural concept highlights the psychological benefits of sunlight, with the goal of creating an uplifting and safe environment for all who seek refuge within its walls. Key elements of the design include **intuitive wayfinding** and **accessibility**. The spaces are crafted with **flexibility** in mind, allowing for dynamic usage that adapts to the needs of its occupants. Circular shapes and gentle curves dominate the layout, reflecting the form of the sun and promoting a **harmonious flow** throughout the center. The interiors feature pastel hues reminiscent of the soft light seen in the early morning and late afternoon, evoking a sense of **calm** and **warmth**. Natural light floods the interiors, strategically enhancing the mental and **emotional well-being** of visitors. Soft, diffuse lighting fixtures mimic the soothing glow of the sun, creating a comforting and inviting atmosphere. Materials such as light wood and soft fabrics are chosen for their tactile and visual appeal, further reinforcing the connection to nature and the sun. Ultimately, the day center stands as a testament to **hope** and positivity, offering a sanctuary for renewal and a **brighter future**.

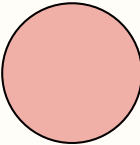
MOOD BOARD



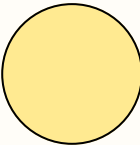
The sun is a daily reminder that we too can rise again from the darkness, that we too can shine our own light.



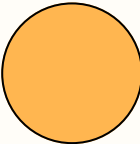
COLOR SCHEME



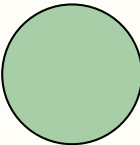
Coral: individuality, warmth, acceptance, and positivity



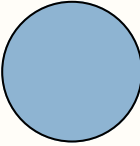
Mustard: warmth, creativity, optimism, and diversity



Amber: joy, security, energy, and positivity



Green: harmony, safety, growth, and health



Blue: security, trust, loyalty, and responsibility

PSYCHOLOGICAL

- Profound impact on mental and emotional well-being
- Creates a sense of comfort and safety
- Dispels darkness and gloom

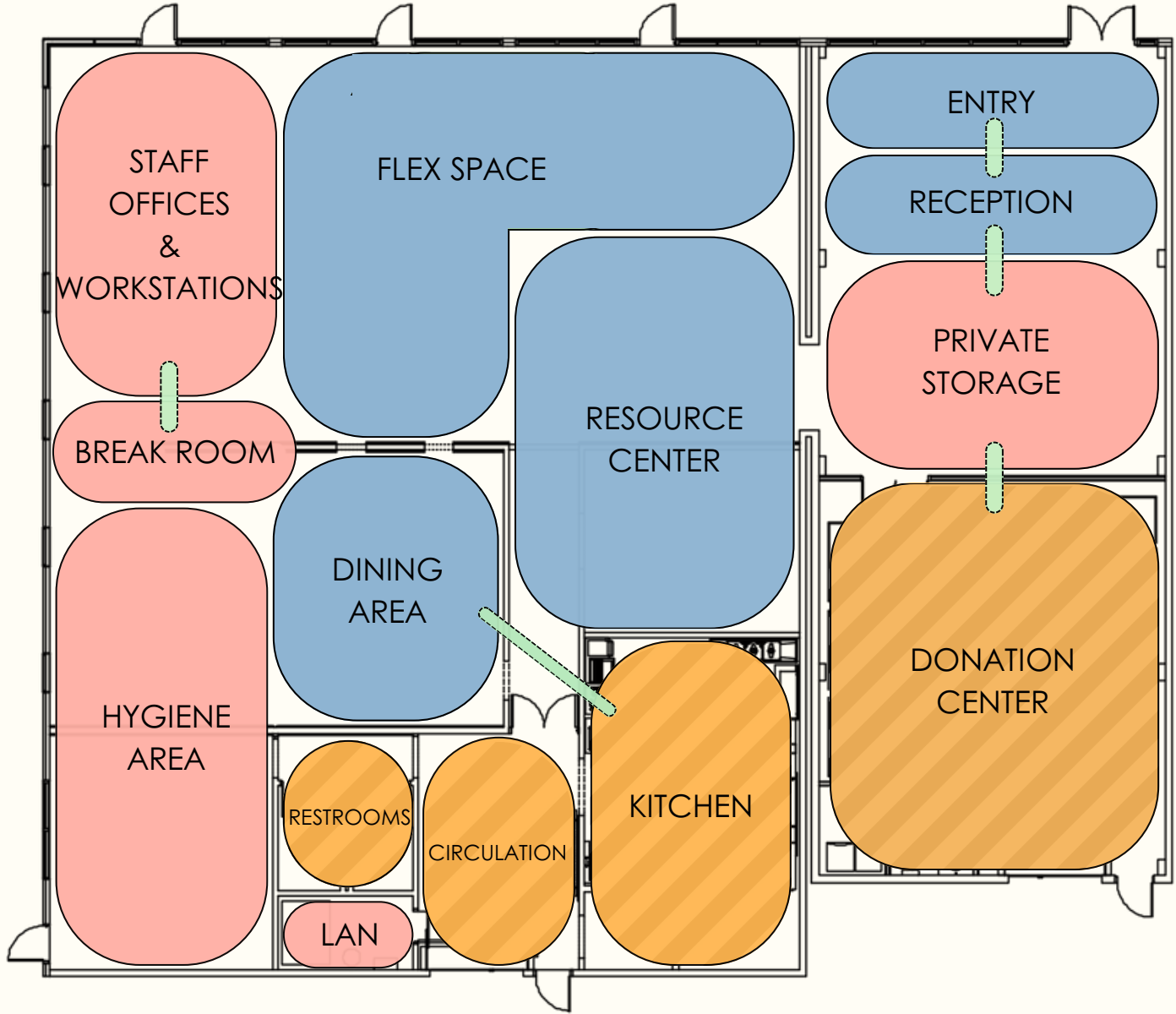
SYMBOLISM

- Symbolizes hope and positivity
- Renewal and new beginnings
- Promise of a fresh start

MESSAGE

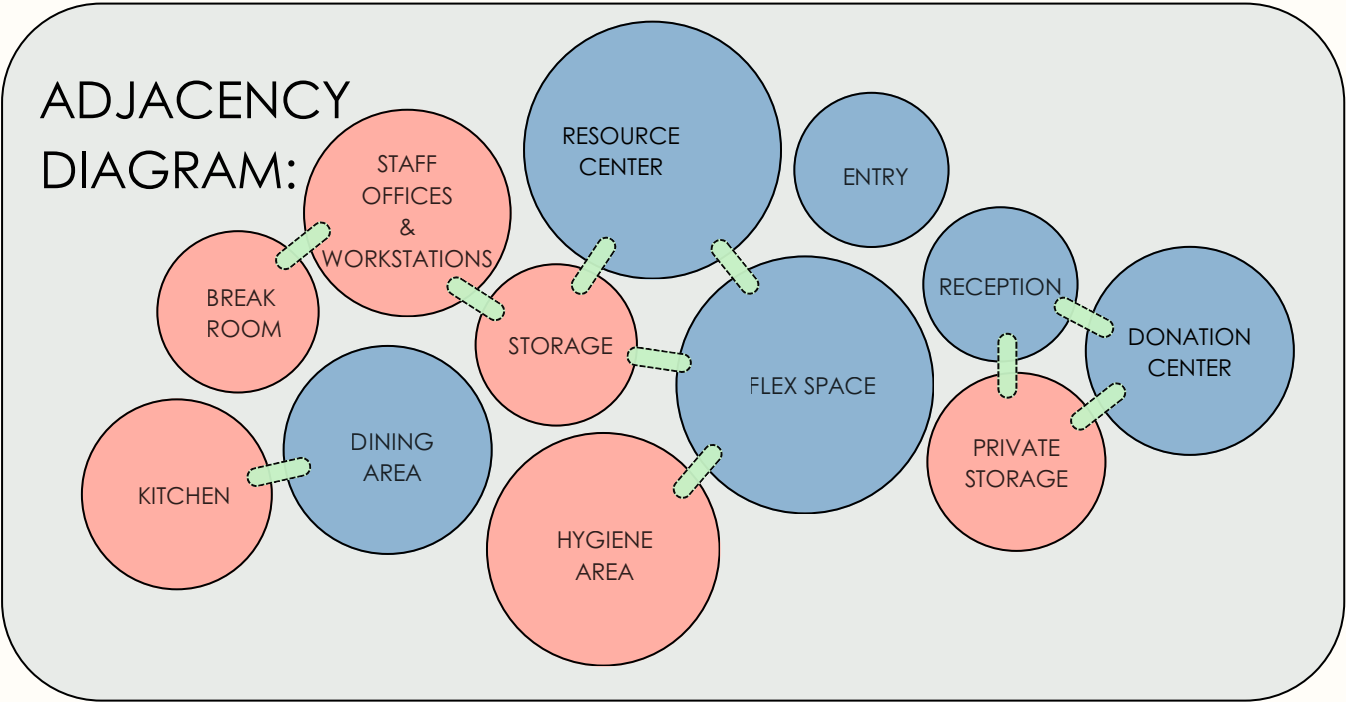
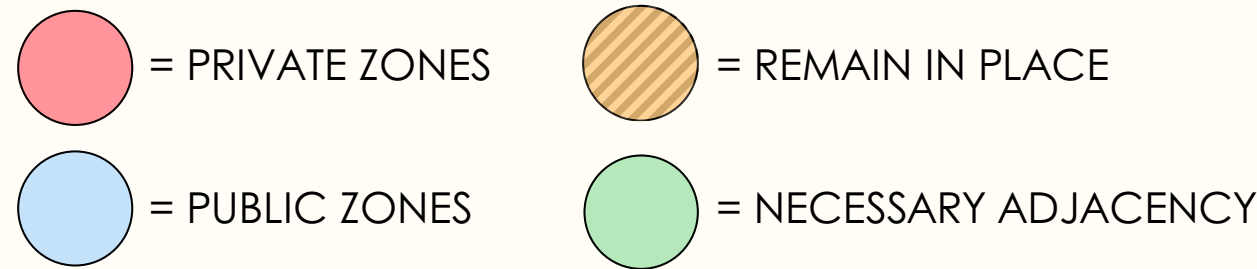
- Each day brings new opportunities and possibilities
- Inspires hope and motivation
- Every night comes a new dawn

BUBBLE DIAGRAMS

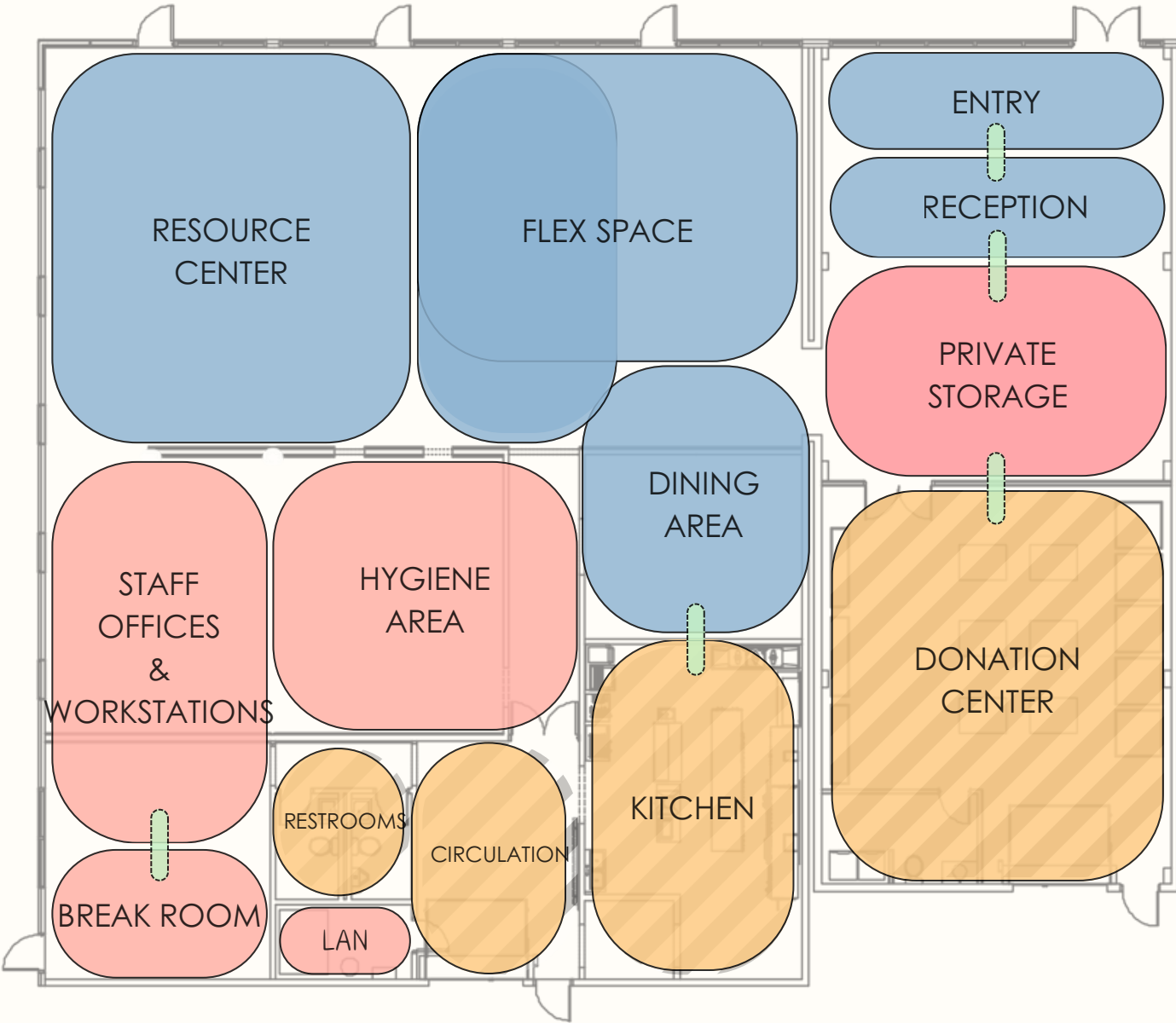


OPTION 1:

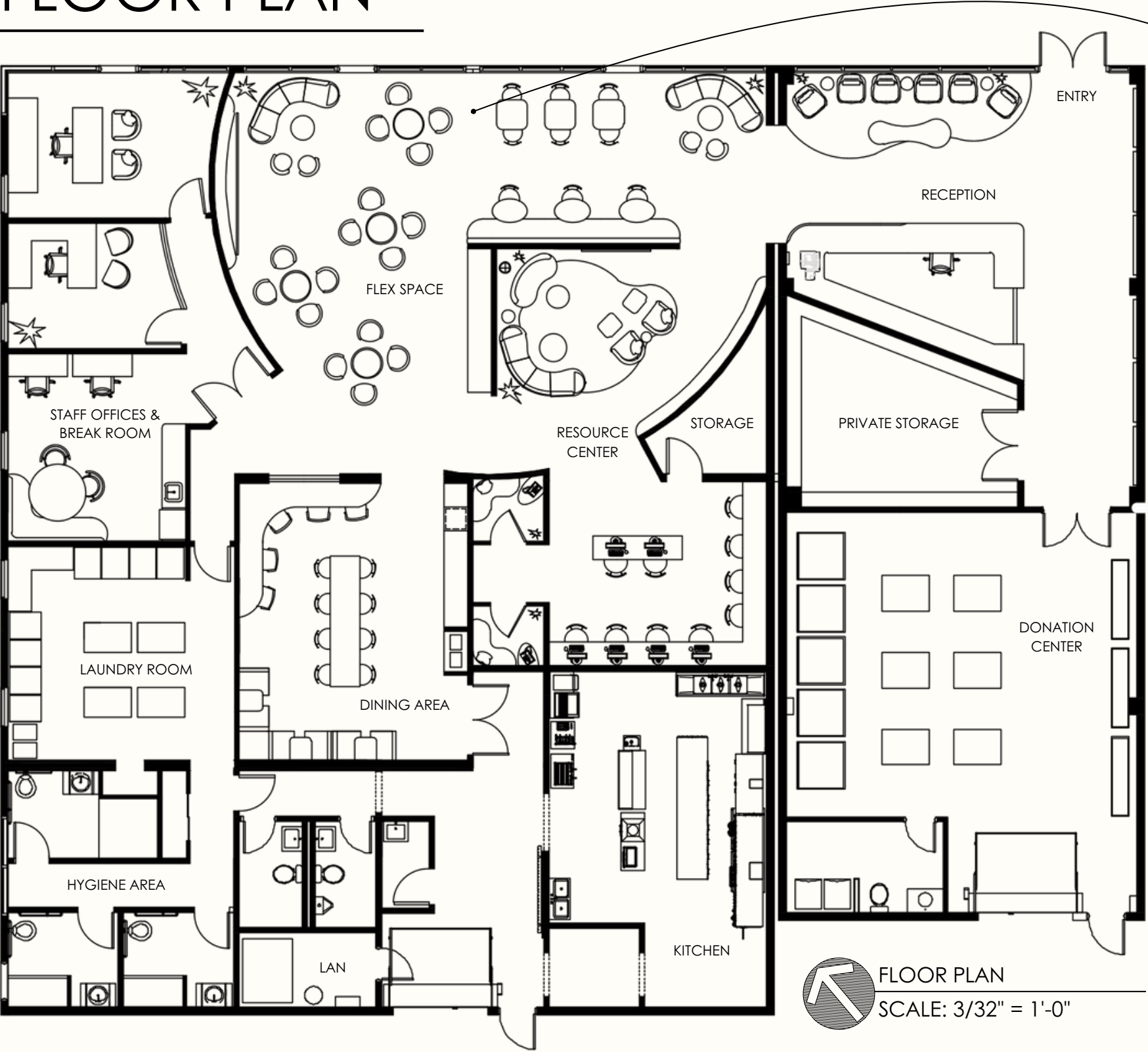
Option 1 more effectively organizes the required adjacencies, clearly defining the private and public zones within the space. It ensures that each zone is thoughtfully designed to be **easily accessible** and **navigable** for both employees and patrons, promoting **efficiency** and a seamless user experience throughout the environment.



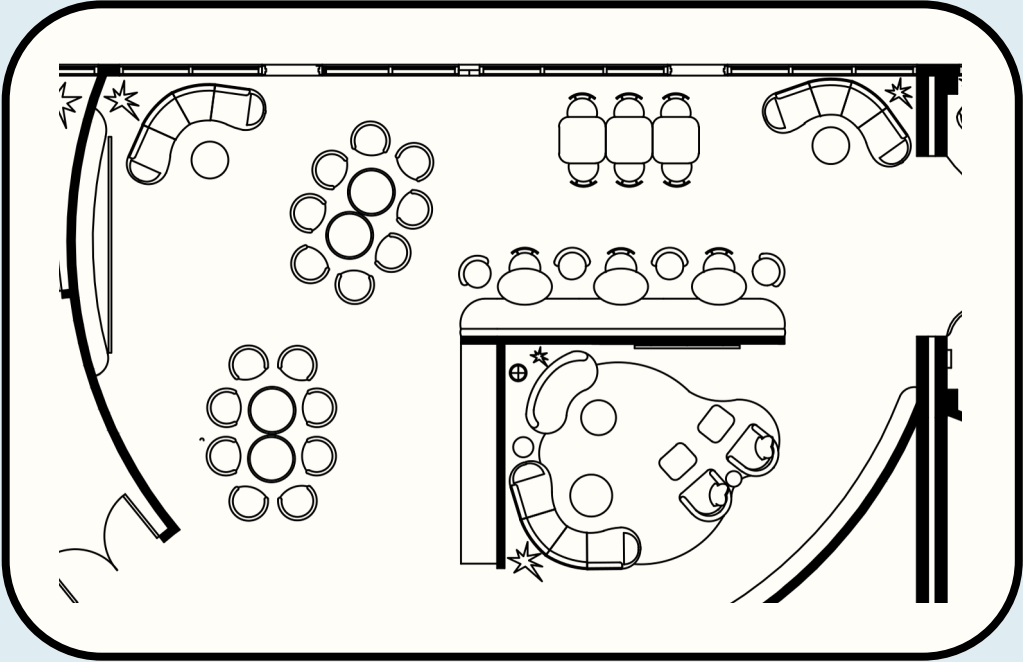
OPTION 2:



FLOOR PLAN



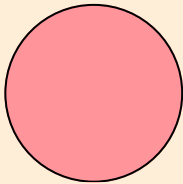
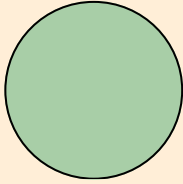
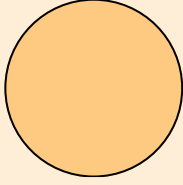
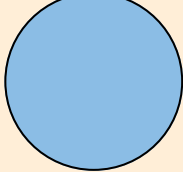
SECOND FLEX SPACE SEATING OPTION:
While there are numerous ways to arrange the furniture, this particular seating configuration was intentionally crafted to accommodate larger group activities. The layout ensures ample space for **interaction** and **collaboration**, fostering an environment where participants can comfortably engage with one another. By prioritizing **accessibility** and **visibility**, this arrangement supports effective communication and group dynamics, making it an ideal choice for **team-based tasks**, workshops, or other collective activities.

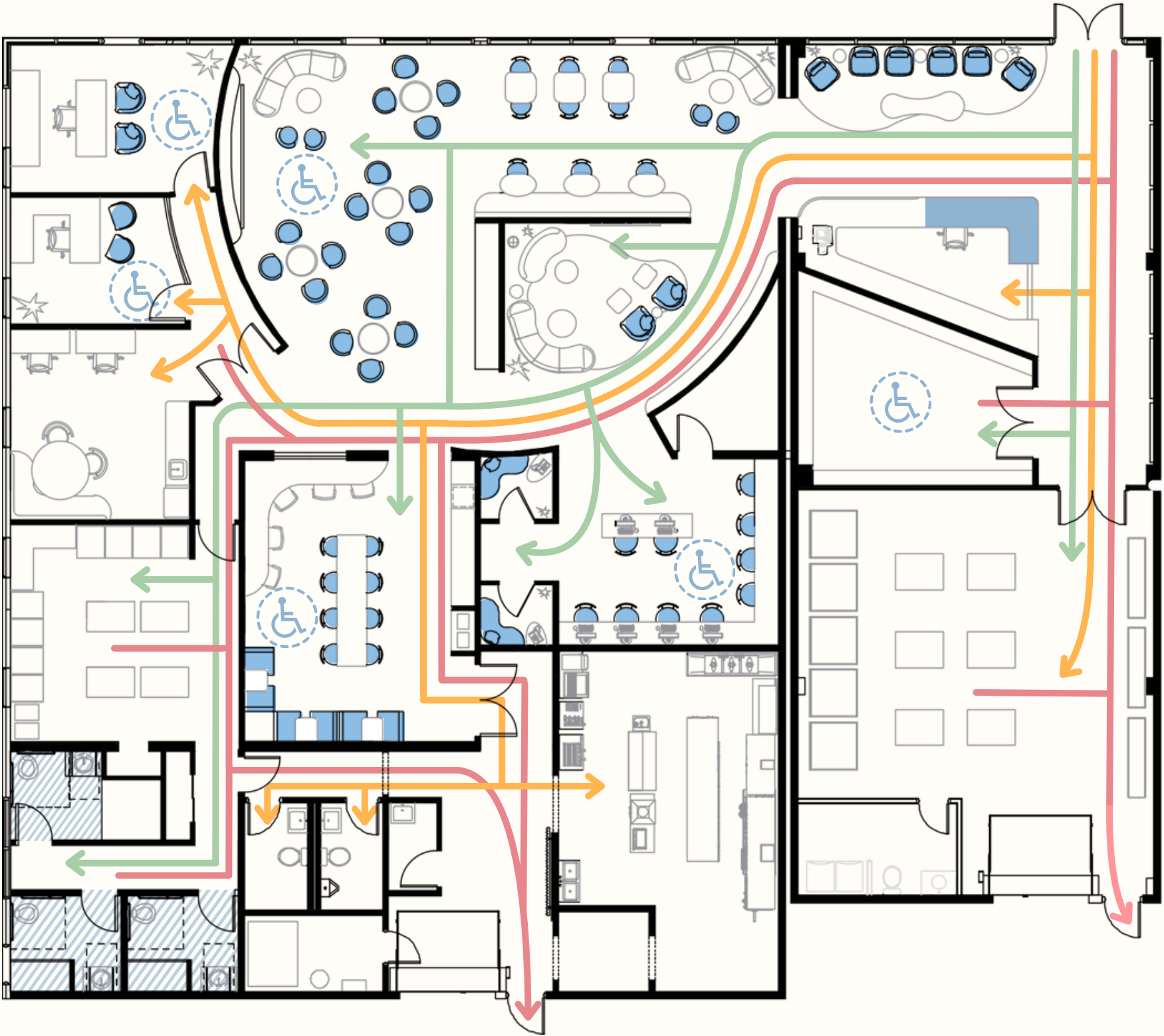


Inspired by the circular shape of the sun and its dynamic rays, this floor plan was intentionally designed with the most active zones concentrated at the center. The angled walls, representing sun rays, create distinct areas within the building while maintaining a cohesive flow. Circular and curved lines dominate the layout, reinforcing the concept of the sun's harmonious form. Pathways were carefully prioritized to ensure accessibility and seamless navigation throughout the space, enhancing functionality and user experience.

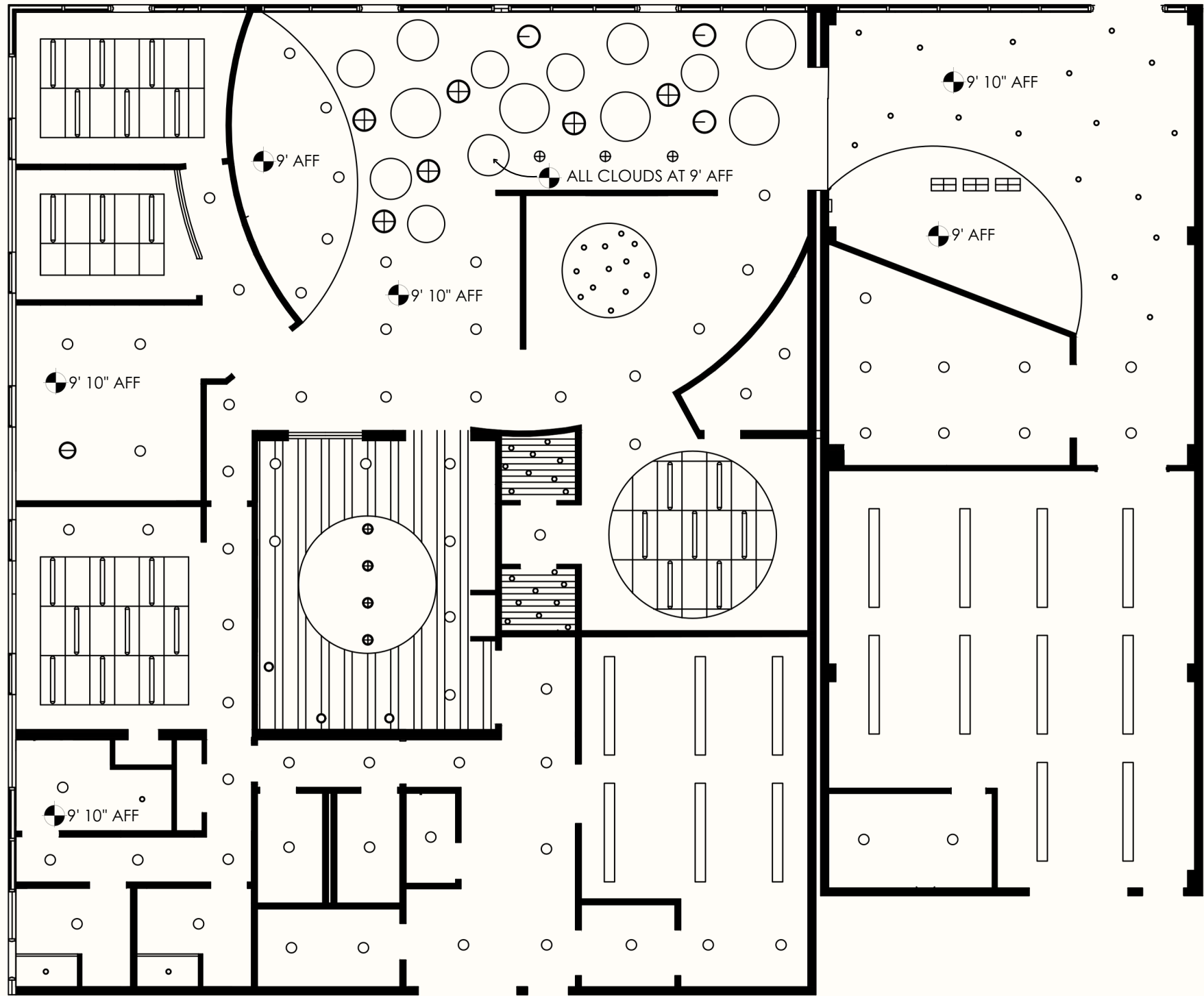
CODE PLAN


LEGEND:

-  = EGRESS PATH
-  = PATRON PATH
-  = EMPLOYEE PATH
-  = ADA ACCESSIBLE






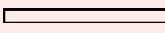


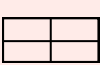


REFLECTED CEILING PLAN



 REFLECTED CEILING PLAN
SCALE: 3/32" = 1'-0"

LEGEND:

-  = 6" MINI PENDANT
-  = 7" PENDANT
-  = 6.5" PENDANT
-  = RECESSED DOWNLIGHT
-  = MINI DOWNLIGHT
-  = INDUSTRY LIGHT
-  = 4' LED STRIP LIGHT
-  = COPPER LIGHT
-  = 24" X 12" LARGE PENDANT



FEATURED LIGHTS



LED PENDANT
85 CRI
3500K



LED PENDANT
90 CRI
4000K



LED CHANDELIER
80 CRI
3500K



LED PENDANT
85 CRI
3500K

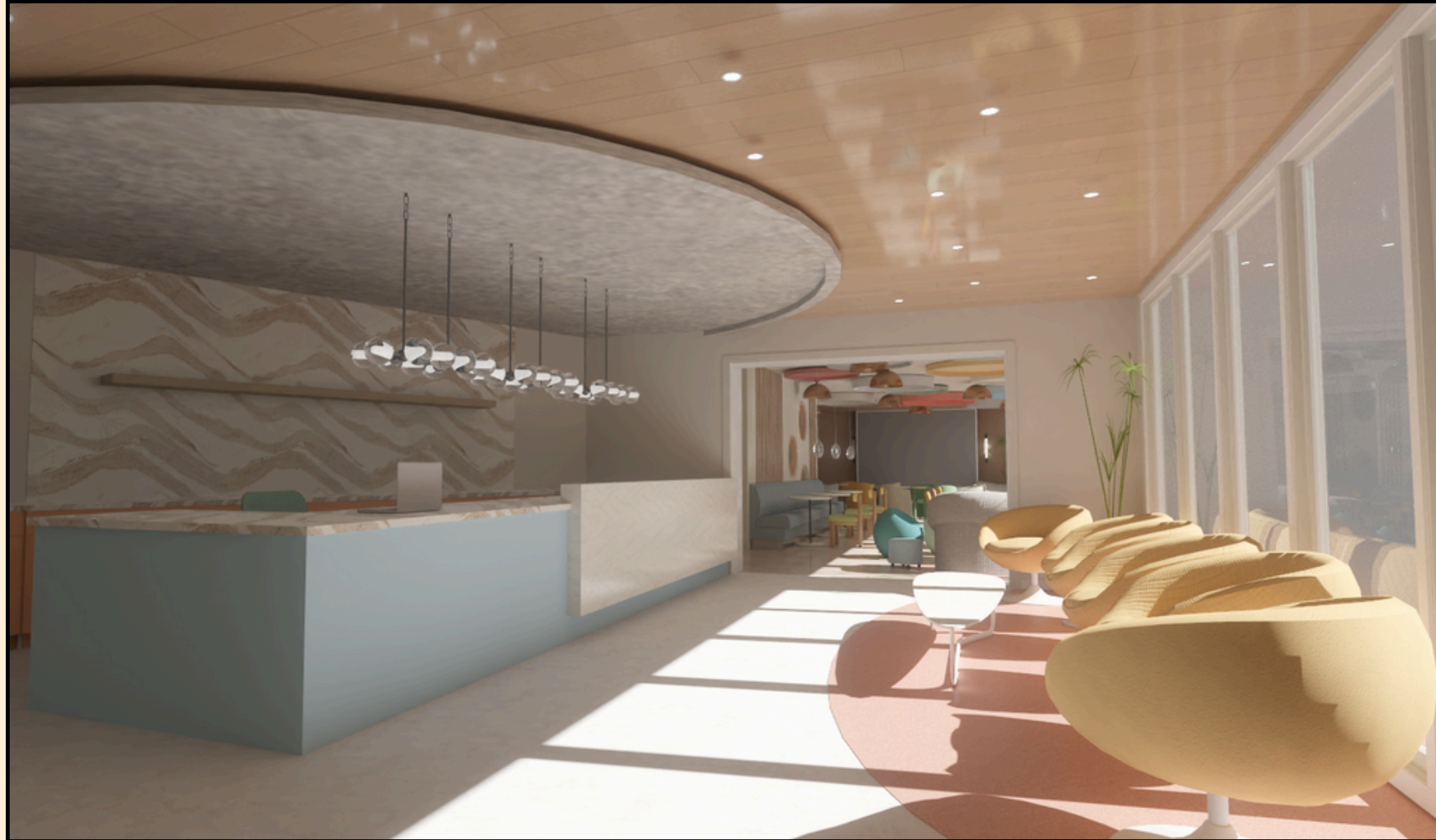


LED CHANDELIER
80 CRI
3500K



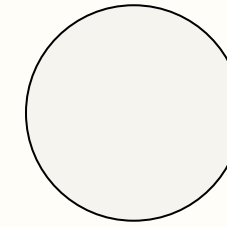
LED PENDANT
85 CRI
3500K

INTERIOR PERSPECTIVES

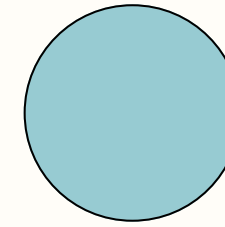


RECEPTION AREA

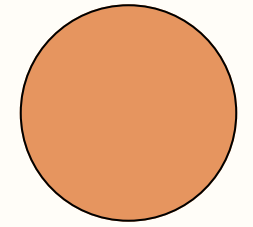
The reception area design seamlessly blends aesthetics and functionality to create a welcoming environment. Natural light floods the space, opening it up and enhancing its warmth and vibrancy. Soft pastel hues, paired with wood and stone elements, foster a calm and safe atmosphere for patrons. Individual seating arrangements ensure privacy and comfort, while a bulletin wall near the desk offers valuable resources like job postings and club information. Behind the reception, Cambria quartz provides a durable and elegant backdrop for signage, adding sophistication to the space. The cabinetry behind the desk offers ample storage, ensuring a clutter-free and organized environment. Additionally, Fineline Millworks' panel system showcases practical storage solutions like cubbies and shelves, ideal for handouts and free items. Together, these thoughtful design elements create a harmonious space that feels both supportive and inviting.



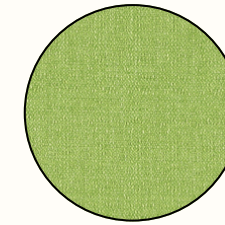
SW 9541
White Snow



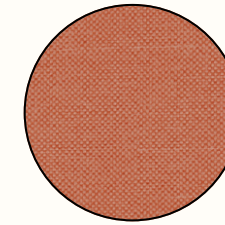
SW 9046
Gentle Aquamarine



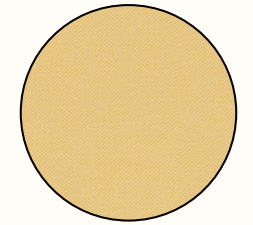
SW 6641
Outgoing Orange



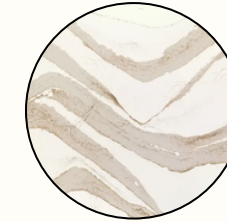
Continuum 10
Spring 422-003



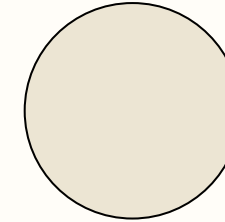
Mode
Paprika MO-011



Icon
Lemon IC-002



Britannica
Gold Cool



Willow Velvet
Melamine M6



System Panel
4' x 8' White Oak



BULLETIN WALL

INTERIOR PERSPECTIVES

FLEX SPACE

The primary goal behind the design of the flex space was to craft a well-furnished, comfortable environment that serves as a sanctuary for its users. Considering the homeless population who will utilize the space, creating a **safe, calming** atmosphere was paramount. This design aims to offer a complete escape from the harsh realities they face daily. Thoughtfully selected colors play a key role in **uplifting** patrons' moods, sparking inspiration, and fostering **creativity** within this welcoming and **transformative** environment. Mayer fabrics were selected that have low chemical emissions, improving the **Indoor Air Quality** in which the products are used.



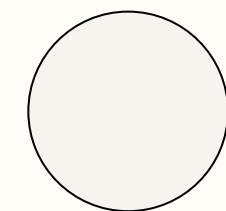
PROJECTOR AREA

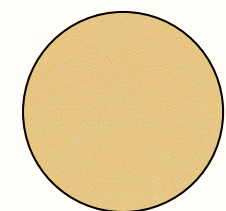


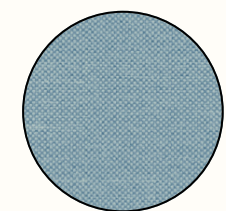
KITCHENNETTE

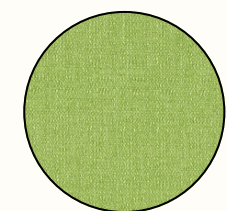


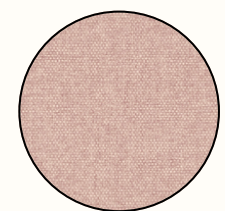
FLEXIBLE SEATING SPACE

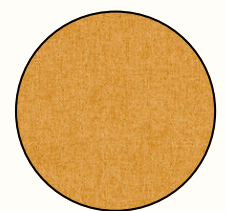
- 

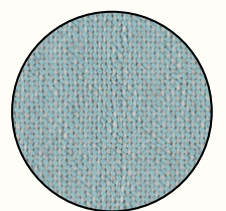
SW 7004
Snowbound
- 

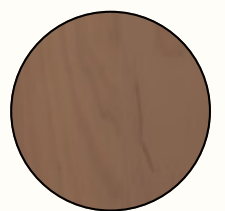
Icon
Lemon IC-002
- 

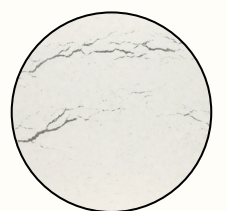
Mode
Chambray MO-004
- 

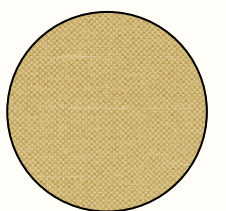
Continuum 10
Spring 422-003
- 

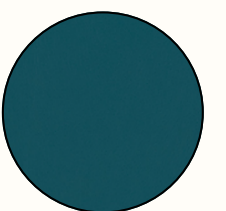
Gravity
Blush TL464-001
- 

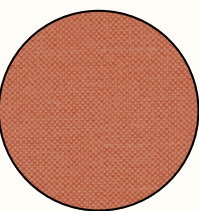
Gatsby
Topaz WC978-002
- 

Lancaster
Sky 332-004
- 

Maple
Oatmeal
- 

Berkshire Steel
Satin Ridge
- 

Mode
Straw MO-002
- 

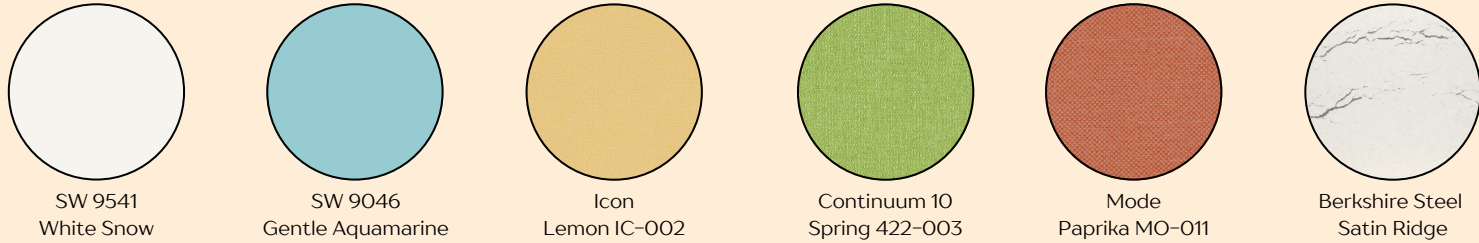
Ultrahide
Raintree UH-023
- 

Mode
Paprika MO-011

INTERIOR PERSPECTIVES



DINING SPACE



OFFICE SPACE



RESOURCE CENTER

The TV area of the resource center has been carefully crafted to evoke the warmth and familiarity of a living room, providing a comforting retreat for individuals facing daily hardships. Warm wood tones, cozy furnishings, and soothing pastel hues were chosen to create an inviting and calming environment. The integration of the Fineline Millworks panel system was also added to the space.

