



DAILY CENTER

Functional Precedents



Case Study: MarkRidley – Thomas (MRT) Behavioral Health Center

Location: Los Angeles, California



Case Study: La Casa Permanent Supportive Housing

Location: District of Columbia, Washington, DC.

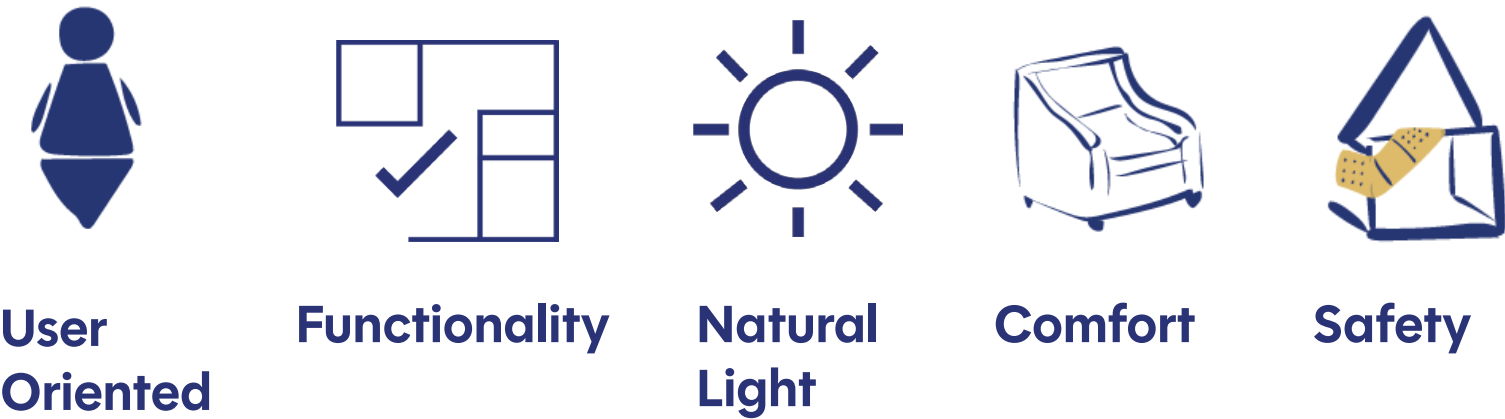
Academic Articles

The Impact of Trauma-Informed Design on Psychological Well-Being in Homeless Shelters

"Trauma-informed design" as a concept that intertwines interior design, environmental psychology, and clinical psychology. Through a program evaluation based on a trauma-informed design project, the authors were able to define positive outcomes to support in the assessed experiences: preparedness, hopefulness, and safety.

Creating Safe Spaces: Designing Day Shelters for People Experiencing Homelessness

This article is a systematic review that was conducted to develop a day shelter in Fort Worth, Texas. Interdisciplinary resources were identified and reviewed as crucial when designing these types of facilities.



Responding to trauma informed design

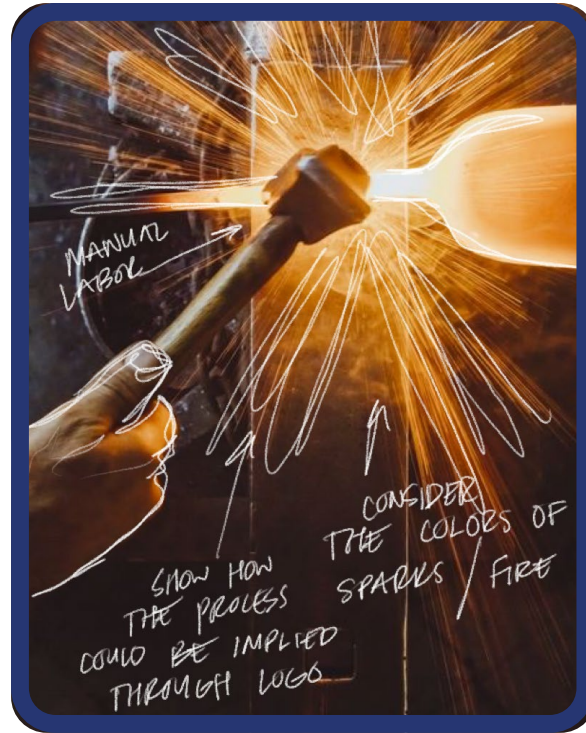
Both case studies and research articles navigated design through the scope of user opportunity. There is a great focus on implementing and developing spaces that allow users to **rebuild a sense of control**. Spaces are defined through its **capacities** of enhancing **user experience**, whether that is layout and planning, lighting, furniture selections, visual stimuli, or the services provided.

Targeting perceived spaces and autonomy align with **"place-based" needs** that play a crucial role in the designing a space that **bridges gaps** and creates a **sense of community** for users.

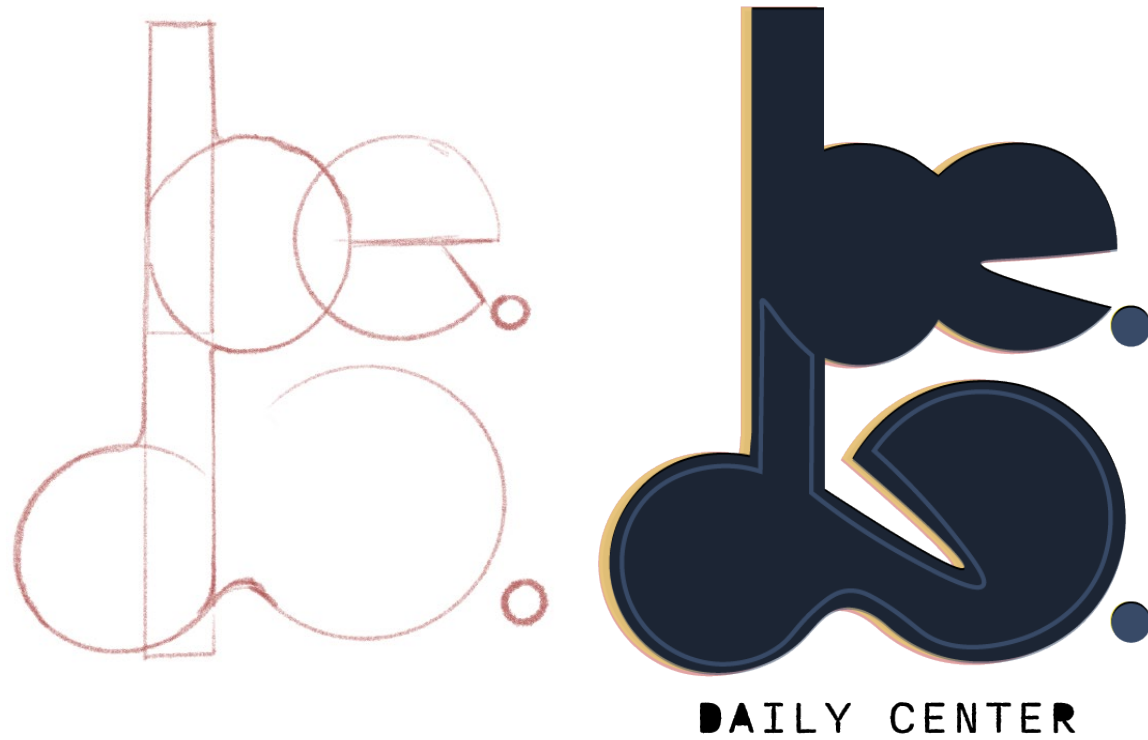
There are key priorities that narrow the necessities and the aim for **impactful design**:

- User-Oriented
- Functionality
- Natural Light
- Comfort
- Safety

The goals define clearer objectives towards human centered design that will **provide solutions** for users who have faced longstanding impact from homelessness.



The branding process began by **extracting elements** in common within the concept. The **forms** and the **color** were considered through the process of blacksmiths: **fire**. Forms were identified through the creation: **bending|forming**.

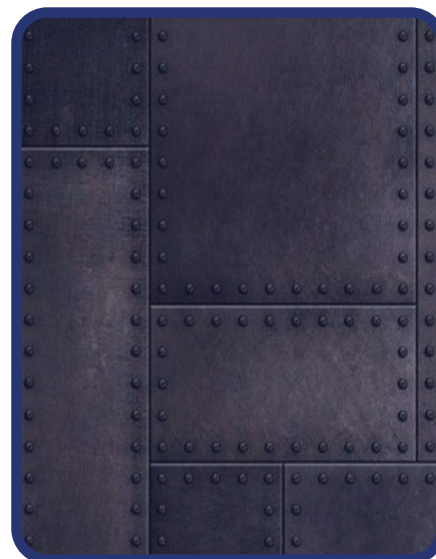
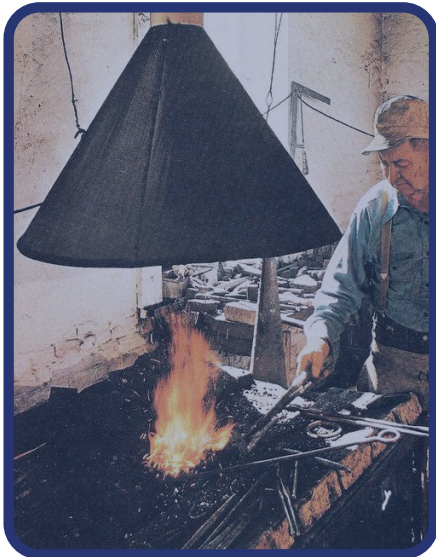


be.do. is about allowing users to explore who they are and to find themselves throughout their experience at be.do. Daily Center. It is about doing what is necessary (staff to user, user to staff) to find good outcomes and possibilities.





# blacksmith.

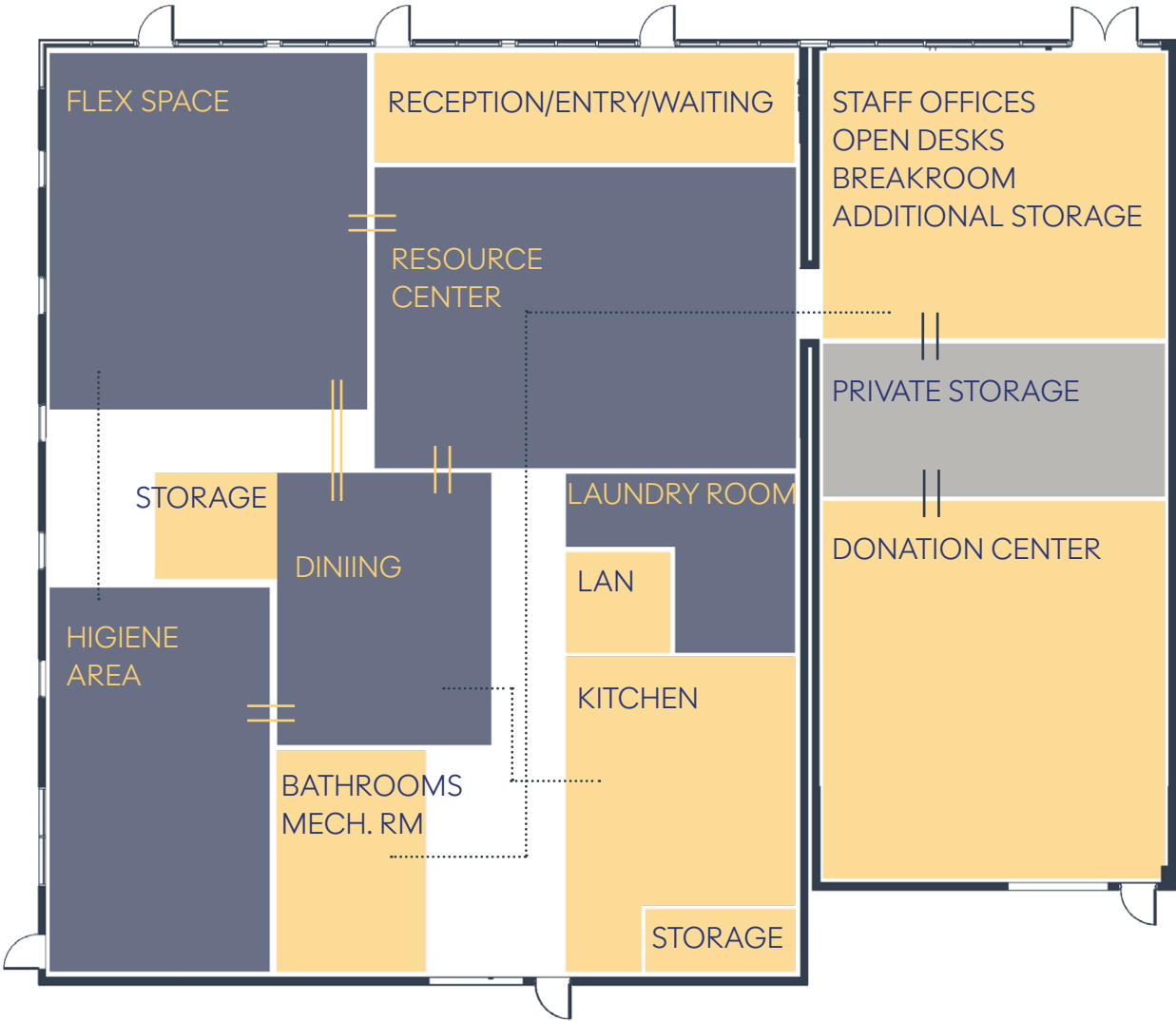
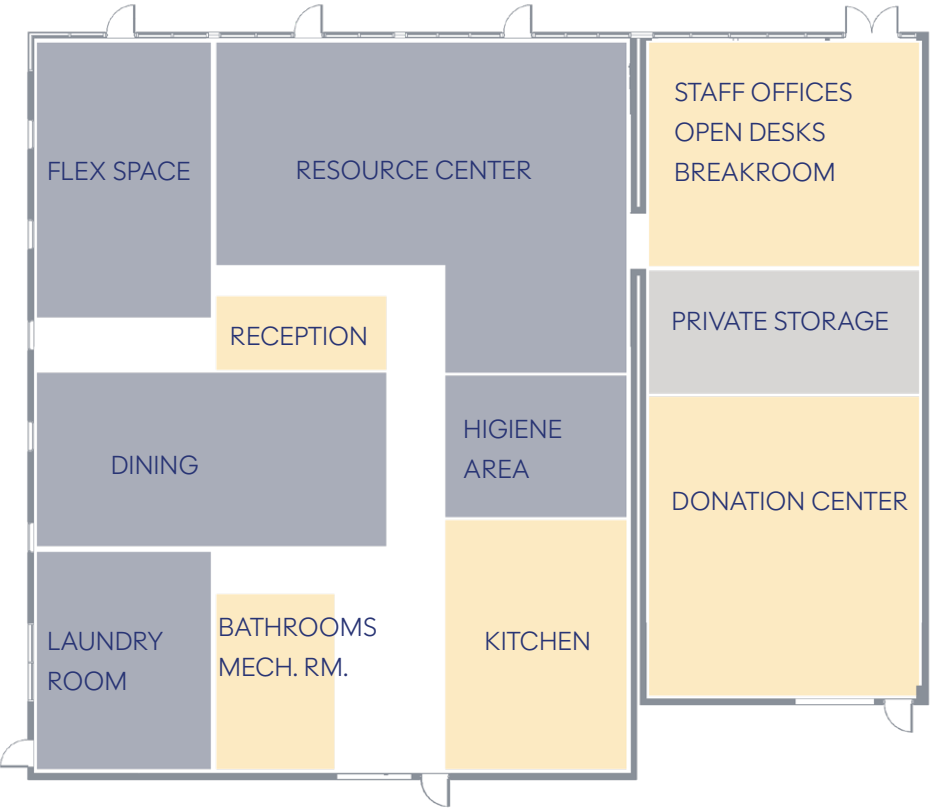
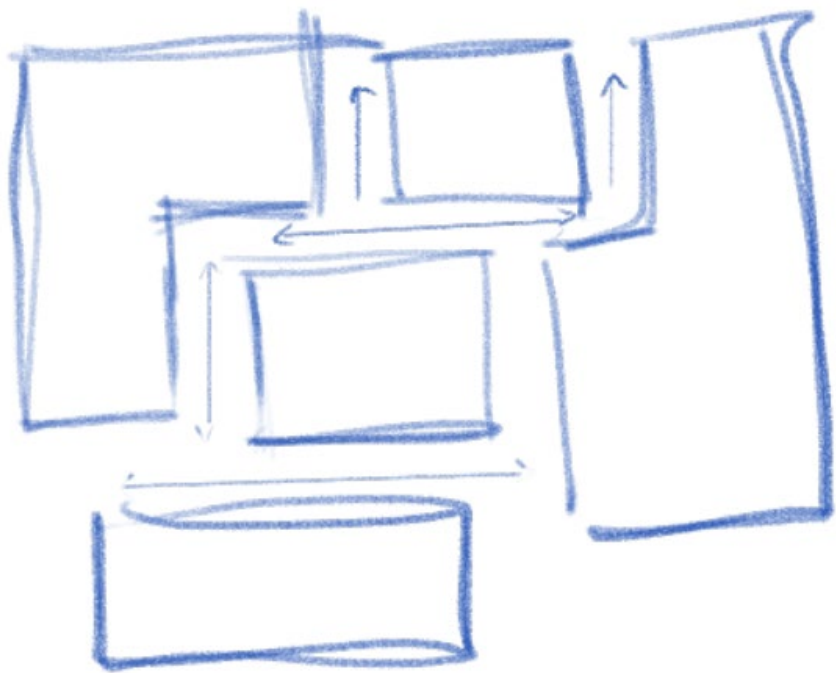


Wanamaker began with a **blacksmith shop**; blacksmiths repair, they forge materials, they build and create objects. Similarly, the daily center aims to **design a space** that **forges connections** and allows its users to **build** and **create** their future with **greater support** from staff and resources made available to them. Embracing the blacksmith heritage, be.do. Daily Center has worked collaboratively with **fellow blacksmiths around the area**. Their contributions have provided **custom furniture** and **casework** for the users. All pieces have been **carefully crafted** keeping in mind the importance of heritage and user experience. Material selection includes different **metals, wood, and upholstery**. The **forms** are to mimic the form of be.do. Daily Center, but to also provide users with the **freedom of experiencing** the space as they wish. They are provided with various seating arrangements to allow them to build a **sense of control**. The intent is to **extract the feel for metal, raw materials, while maintaining a welcoming feel for all users**. be.do. Daily Center **ties heritage** with **impactful design** that supports all users.

be.do Daily Center, an emphasis on **value** and **wellbeing**. The spaces will have a **sense of connection**; they will be forged, as if two areas were created to be a whole but with different tools and functionalities. From the ceiling, to the floor, to the spaces, be.do. Daily center aims to imply the forms of their **branding identity** and the **heritage** of Franklin Township. Users will be the **blacksmiths** of their new stage of life rising from **opportunity** and **effort**.



space planning



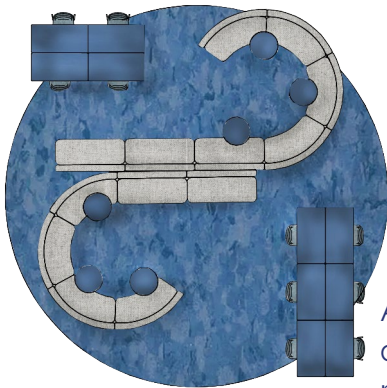
FINAL BLOCK DIAGRAM

This block diagram demonstrates a division between staff and patron usage of spaces. Overall, there is a good separation of the functionalities of each space; the flex and resource space almost overlap because they have been designed to be an open area to take advantage of the daylight available from the usage of curtain walls. Similarly, the shower and bathrooms are divided (wet and dry area) by one sliding door; the layout option almost mimics the “forging” element of the concept of the project. Users will have efficiency in terms of path flow and space access. The intent is to provide them with different access points. The hygiene area, the kitchen, the resource, and flex space can all be accessed between two access points.

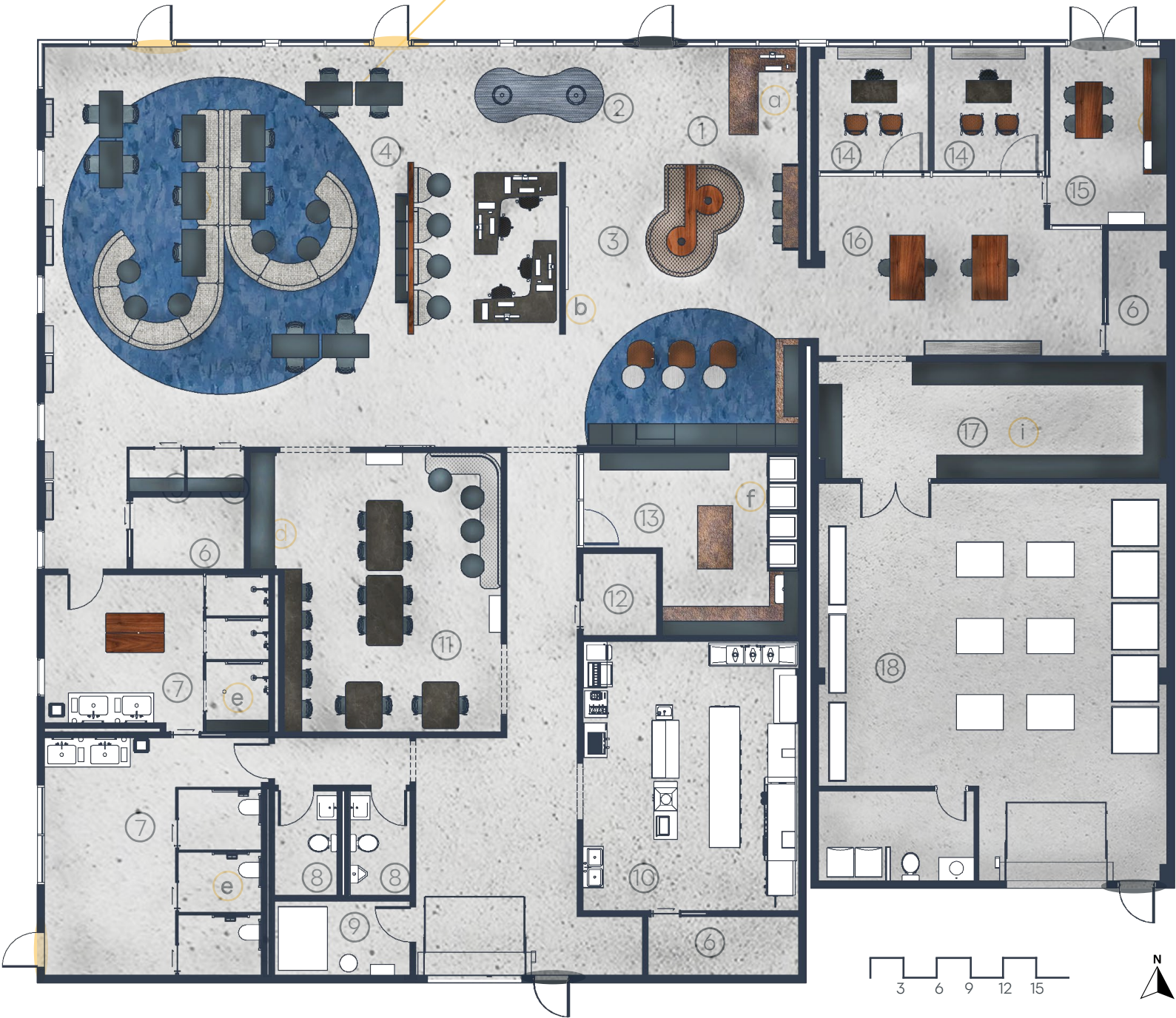
The block diagram to the left provided a layout of the space, but there was a lack of path flow and space size consideration. There was a lack of storage consideration, and the hygiene area was too limited in terms of space and ADA compliance.



furniture plan



Additional desks and chairs can be accessed in the nearest storage room.



notes

- a Reception has **additional space** for a printer; file storage is available underneath desk drawers
- b Wall divider with shelves, **information board**, location display, resources, flyers, and other important information
- c Carefully installed **floor outlets** and tables have outlets installed for **additional charging options**
- d Dining counter has space for **additional storage**, meal prep, and a microwave + **two disposals**
- e Showers and bathrooms have **grab bars** and atleast one shower and one bathroom have a **turning radius**
- f Stacked washers and dryers and **additional storage** for tables
- g Shelves for books, games, and a mounted TV + a snack area
- h Breakroom with microwave, mini fridge, sink, and disposal
- i Private storage located **adjacent** to staff areas for safety

room labels

1	RECEPTION	11	DINING
2	ENTRY/WAITING	12	LAN
3	RESOURCE CENTER	13	LAUNDRY ROOM
4	FLEX SPACE	14	STAFF OFFICES
5	PHONE BOOTHS	15	BREAK ROOM
6	STORAGE	16	OPEN DESK AREA
7	HIGIENE AREA	17	PRIVATE STORAGE
8	STAFF BATHROOMS	18	DONATION CENTER
9	MECHANICAL ROOM		
10	KITCHEN		

entry/exit doors

	Staff usage only
	Locked doors, but functional in case of emergency
	Egress doors

lighting plan



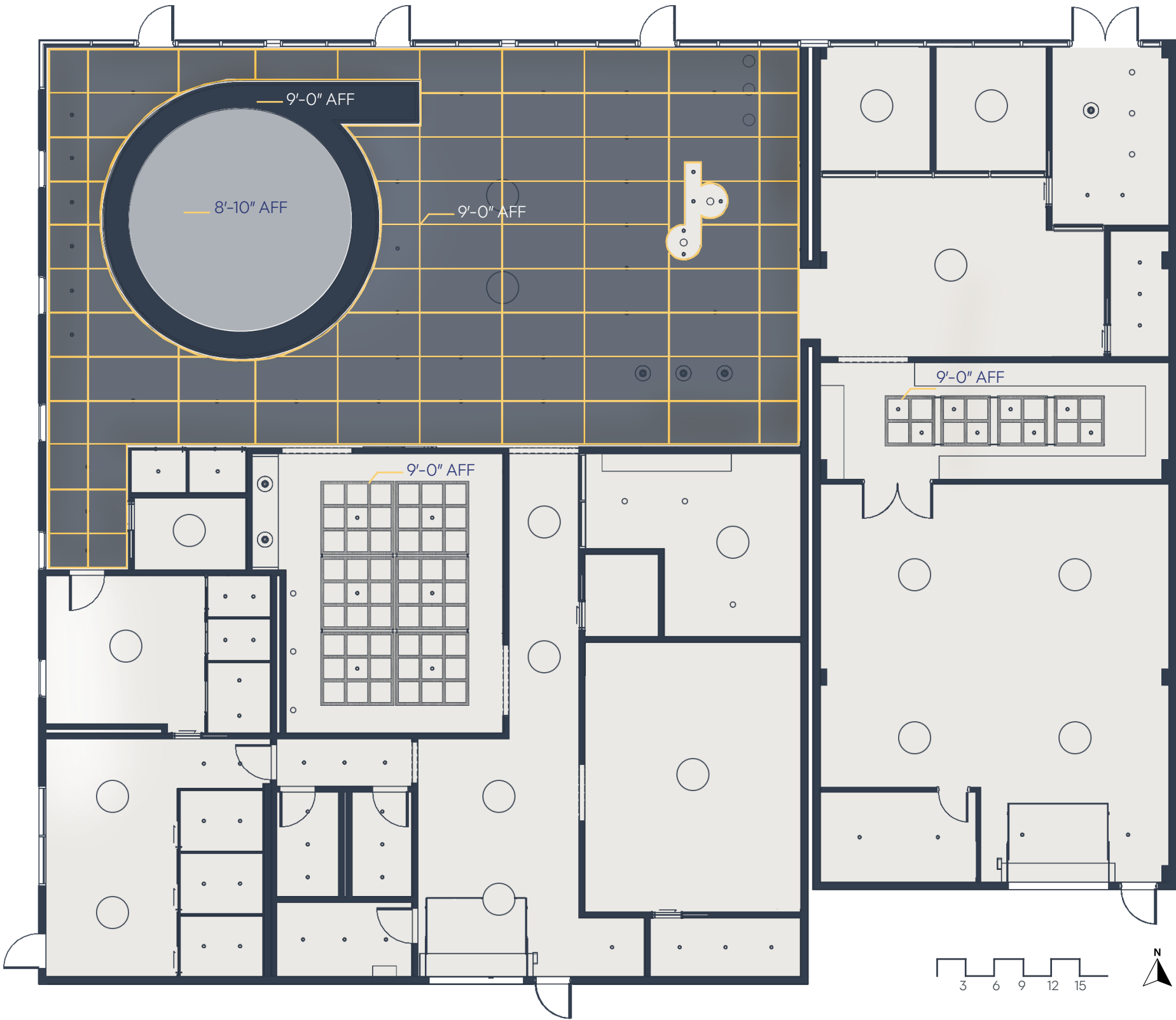
STENCILFLEX  
Acoustic LattiX



Metal Mesh  
Sherwin Williams | Naval



Metal Mesh Frame  
Sherwin Williams | GoldenPlumeria



LIGHTING LEGEND



PRUDENTIAL LTG.  
P3900 - LED  
CRI90 | 2700 - 4000k



FOCAL POINT  
ID+ 3.5" Adjustable Accent  
CRI80-90 | 2700 -3000k



VISUAL COMFORT &  
CO.  
Loft Pendant  
CRI90 | 2700 -3000k



FLOS  
String Lighting  
CRI90 | 2700 -4000k



SCHOOLHOUSE  
Factory 5 Rod Pendant  
CRI80 | 3000k



FOCAL POINT  
ID+ 4.5" Cylinder  
CRI80-90 | 1800 -4000k

NOTES:

Ceiling is 9'-10" AFF unless noted

All lighting pendants are 6'-0" AFF

**Thermal control** is considered through the use of **window coverings** all along the curtain walls. **Users** will experience different sunlight exposure, and they will have the **control** over how much sun is emitted into the space.



code plan







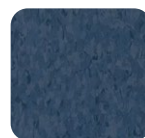
HERMAN MILLER  
Never-Sit-to-Stand Table  
by Motia



STEELCASE  
Palm Stackable Chair  
by Bolia



STEELCASE  
Lounge System Season  
by Vicarbe



ARMSTRONG FLOORING  
Ocean Air



BARRISOL  
Barrisol Les Translucides  
Lighting LED Feature

#### NOTE:

The flooring is to remain as is (concrete), but there is a slight application of Armstrong Flooring to **reflect** the large **circular** panel system above the flex space.

Additionally, to aid the **illumination** and **user experience** of the space, an LED custom feature on the panel system has been applied. It is a stretch ceiling system (Barrisol) that is **durable**, **low maintance**, and **flexible**. It has been used to control the illumination and emit a glow effect.





reception desk + partial view at resuource center

## NOTE:

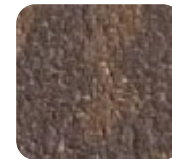
All upholstery has been carefully selected from the Mayer Fabrics product library, meaning that all furniture and upholstery are **bleach cleanable**. Paint applied has been selected from Sherwin Williams and provide low VOC. At **be.do. Daily Center**, we strive for the health and wellbeing of our users and take **IAC** as a critical consideration.



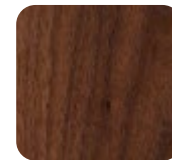
**STEELCASE**  
Enea Lottus Stool  
by Coalesse



**OCTOPUS PRODUCTS**  
Black Stainless Steel  
Metal Sheet



**STEELSCAPE**  
Rustic Raw Hide  
Metal Sheet



**FINELINE MILLWORKS**  
Walnut



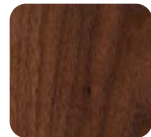
**MAYER FABRICS**  
Spacer Mesh Mocha



**BELDEN BRICK**  
Garnet Blend  
Brick Wall

## NOTE:

The Finline Millworks panel system was incorporated into the coffee/snack area. The **Walnut panel** was used as the backboard and the **Mysterious Velvet** was used for the shelves.



**STEELCASE**  
Lock Lounge Chair  
by Blu Dot



**MAYER FABRICS**  
Milano Umber ML-010



**MAYER FABRICS**  
Spacer Mesh Sterling  
Ottoman upholstery



**STEELSCAPE**  
Rustic Raw Hide  
Metal Sheet



**ZAHNER**  
Stainless Steel  
Custom side tables



snack + lounge area