



OLIVIA SCHRINK  
oschrink@purdue.edu

PURDUE IN INDIANAPOLIS





THE DAILY  
CENTER



COMMUNITY + SHELTER



# THE DAILY CENTER - PROGRAMMING

## RESEARCH

- RESEARCH BY LOCAL NONPROFITS INDICATES THAT APPROXIMATELY 7,800 INDIVIDUALS AGED 14 TO 24 EXPERIENCE HOMELESSNESS IN INDIANAPOLIS EACH YEAR.
- IN INDIANA, THE 2017-2018 SCHOOL YEAR SAW NEARLY 19,789 HOMELESS STUDENTS IDENTIFIED IN PUBLIC SCHOOLS. OF THESE, 46% OF RUNAWAY AND HOMELESS YOUTH REPORTED EXPERIENCING PHYSICAL ABUSE, 38% FACED EMOTIONAL ABUSE, AND 17% WERE SUBJECTED TO UNWANTED SEXUAL ACTIVITY BY A FAMILY OR HOUSEHOLD MEMBER.
- THE INDIANA FAMILY AND SOCIAL SERVICES ADMINISTRATION'S DIVISION OF MENTAL HEALTH AND ADDICTION HAS ADOPTED A TRAUMA-INFORMED CARE MODEL, RECOGNIZING THE PREVALENCE OF TRAUMA AND EMPHASIZING PHYSICAL, PSYCHOLOGICAL, AND EMOTIONAL SAFETY IN SERVICE ENVIRONMENTS.

## TRAUMA INFORMED DESIGN

MEANT TO FILL AN EMOTIONAL AND LONGLASTING GAP IN HOUSING INSECURE CARE. DESIGNING FOR THE PERSON WITH CARE, EMPATHY, AND RESPECT. USING THEIR EXPERIENCES TO SHAPE A SPACE BUILT FOR COMFORT AND RESTORATION

## PROGRAMMING SUMMARY

DESIGNING FOR VULNERABLE AND HOMELESS ADULTS REQUIRES COMPREHENSIVE UNDERSTANDING INTO THEIR STRUGGLES. LIKE THAT HOMELESS INDIVIDUALS ON AVERAGE HAVE ACCESS TO WASH THEIR CLOTHES MAYBE ONCE A MONTH. OR THE FACT THAT 50% OF INDIVIDUALS HEAVILY RELY ON HYGINE STATIONS TO TAKE CARE OF THEMSELVES. THE IMPLICATIONS OF SERVICES WILL BE ACCOMPANIED BY A DESIGN AND OVERALL FEELING OF SECURITY AND CALMING PROPERTIES. ITS HARD TO FEEL SAFE AND RELAXED WHEN YOU ARE CONSTANTLY IN FIGHT OR FLIGHT MODE. THE DESIGN WILL FOCUS ON PROVIDING A SAFE SPACE THAT EVOKES JOY AND CREATIVITY. ADDING SERVICES THAT NOT ONLY HELP WITH THEIR CURRENT STATE BUT ENTIRE LIFE. ADDING LONG TERM CARE INTO BASELINE SERVICES WILL HELP IN PROLONGED EMOTINAL AND PHYSICAL HEALING THAT IS MISSING IN TRADITIONAL HOMELESS AND DAY SHELTERS

"DON'T TRY TO DRIVE THE HOMELESS INTO PLACES WE FIND SUITABLE. HELP THEM SURVIVE IN PLACES THEY FIND SUITABLE"  
-DANIEL QUINN

## MOST NEEDED SERVICES

- COMPUTERS AND CHARGING STATIONS, ESPECIALLY FOR JOB AID.
- LAUNDRY ACCESS
- TV/NEWS OUTLETS
- EXERCISE AND EDUCATION
- BATHING ACCESS



ADDRESS:  
8911-8919  
SOUTH  
EASTERN  
AVE.,  
INDIANA-  
POLIS, IN  
46239

## BUILDING SCOPE

LOCATED JUST OUTSIDE THE INDIANAPOLIS METROPOLITAN AREA. THIS SPACE IS NESTLED IN A HISTORIC PART OF THE CITY. ALTHOUGH IT IS NOT WITHIN A DESIGNATED HISTORIC DISTRICT. THE EXISTING BUILDING INCLUDES APPROXIMATELY 7,180 SQ. FT. OF COMMERCIAL SPACE ON A CORNER LOT. IT'S A FREESTANDING BUILDING WITH A LARGE SIDEWALK IN THE FRONT AND A SPACIOUS PARKING LOT IN THE BACK. CEILING HEIGHT IS 9' - 10" AFF TO BOTTOM OF EXPOSED DECK. WITH A 12" SPACE BELOW FOR MECHANICAL PIPING THAT SERVES THE FIRST AND SECOND FLOORS. AND JOISTS FOR THE FLOOR ABOVE. THE EXISTING FLOOR IS A CONCRETE SLAB. IT IS PERMISSIBLE TO CUT INTO FLOOR FOR PLUMBING RELOCATION, ETC. EXTERIOR BUILDING IS MIXED MATERIALS: BRICK AND CMU.



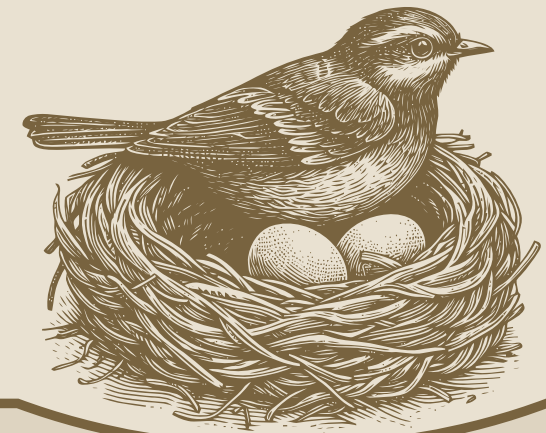
# THE DAILY CENTER - CONCEPTUAL WORK

RETURN  
TO THE  
NEST

## Concept Statement

The daily center is a trauma-informed community shelter designed to provide comfort, dignity, and adaptability for individuals experiencing homelessness during any season or circumstance. Subtly Inspired by the warmth and protection of a bird's nest, the space incorporates soft, organic forms, layered textures, and natural materials to create a sense of safety and belonging. Spa-like elements including warm lighting, calming acoustics, and access to hygiene stations offer a soothing atmosphere that counteracts the stress of displacement. Thoughtful sensory design ensures a balance between privacy and connection, allowing guests to feel both secure and supported. Using quiet reflection areas, access to human essentials and communal gathering spaces to provide opportunities for both solitude and social connection. Every detail is crafted to promote healing, stability, and empowerment, transforming the shelter into not just a place to stay, but a space to restore, rebuild, and move forward.

RESTORATIVE



Building Inspiration : Spa in  
Louisville, KY



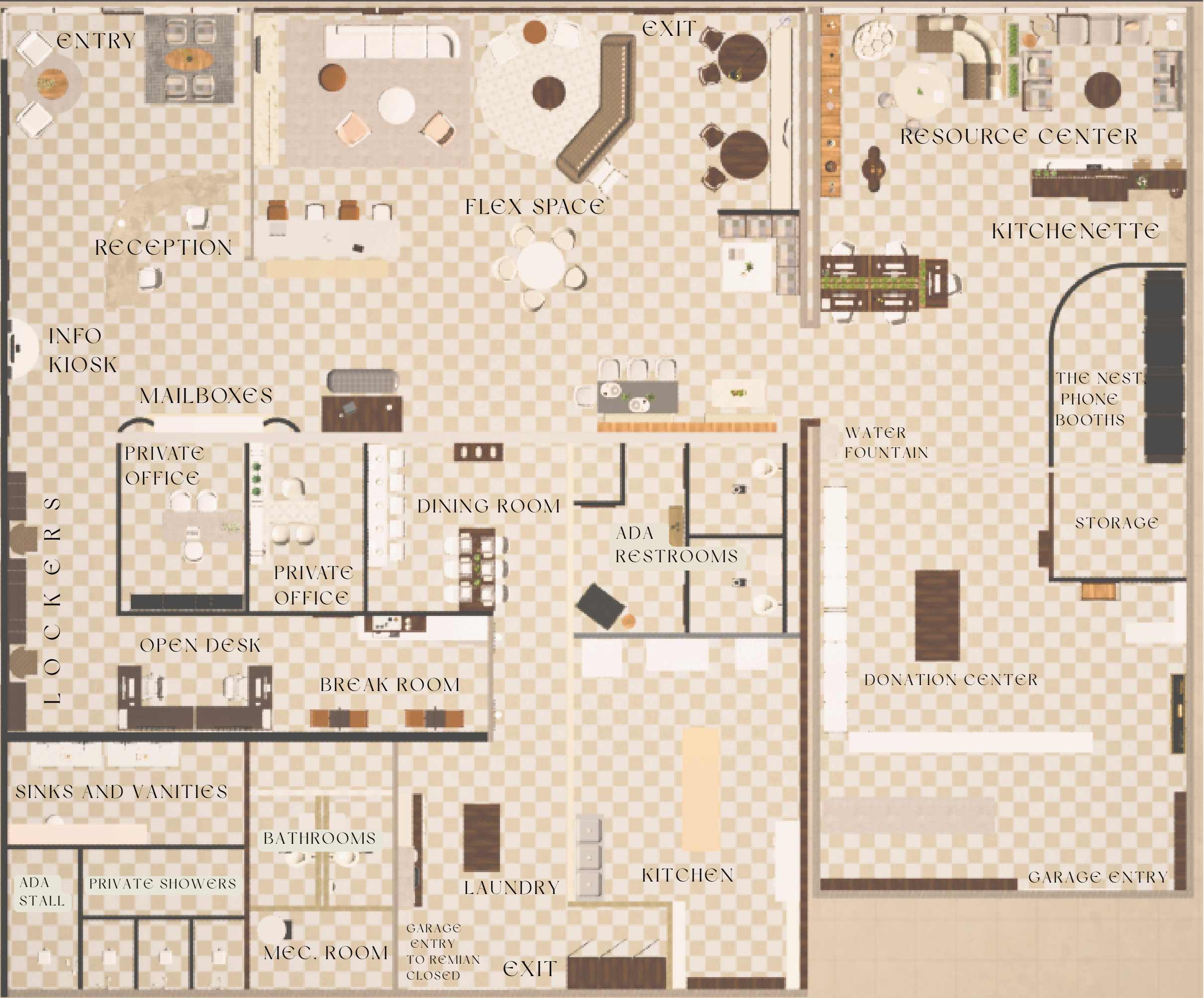


# THE DAILY CENTER BLOCK DIAGRAMS

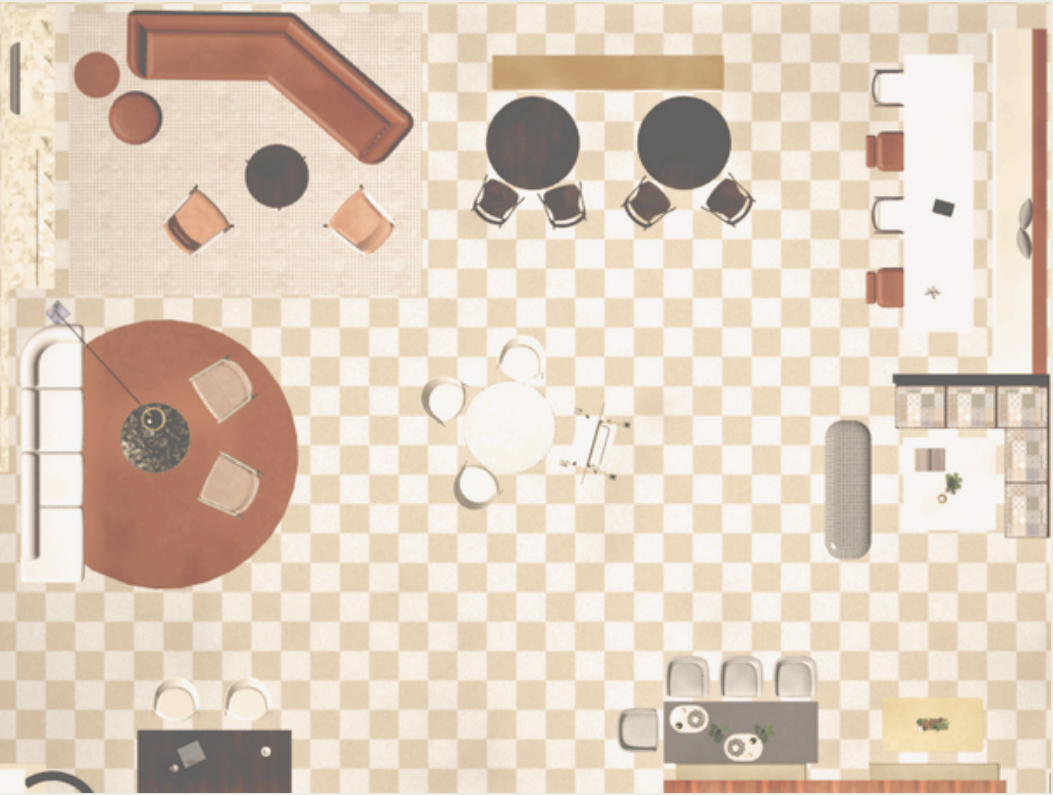




# DAILY CENTER FLOOR PLAN

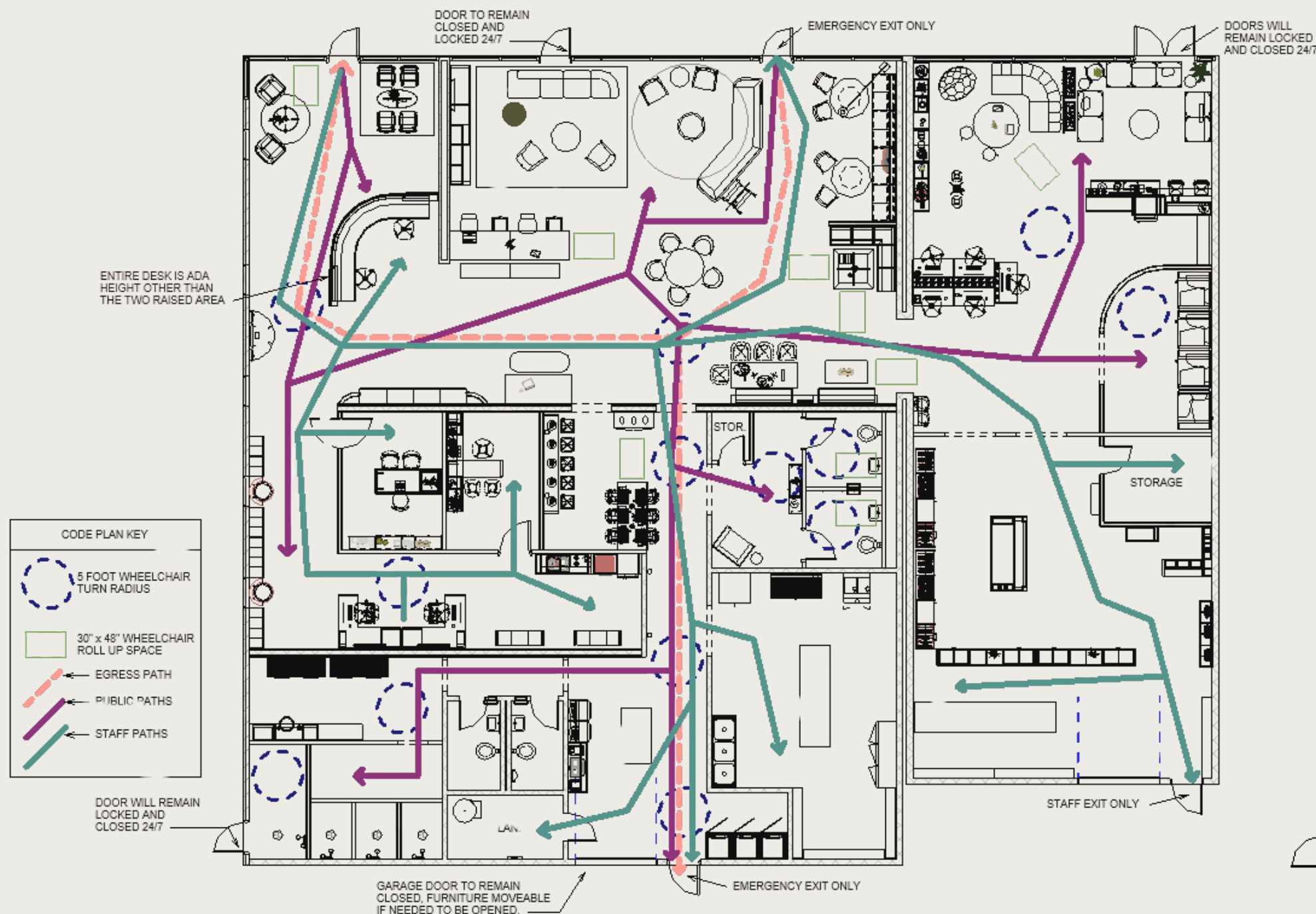


## FLEX SPACE OPTION 2

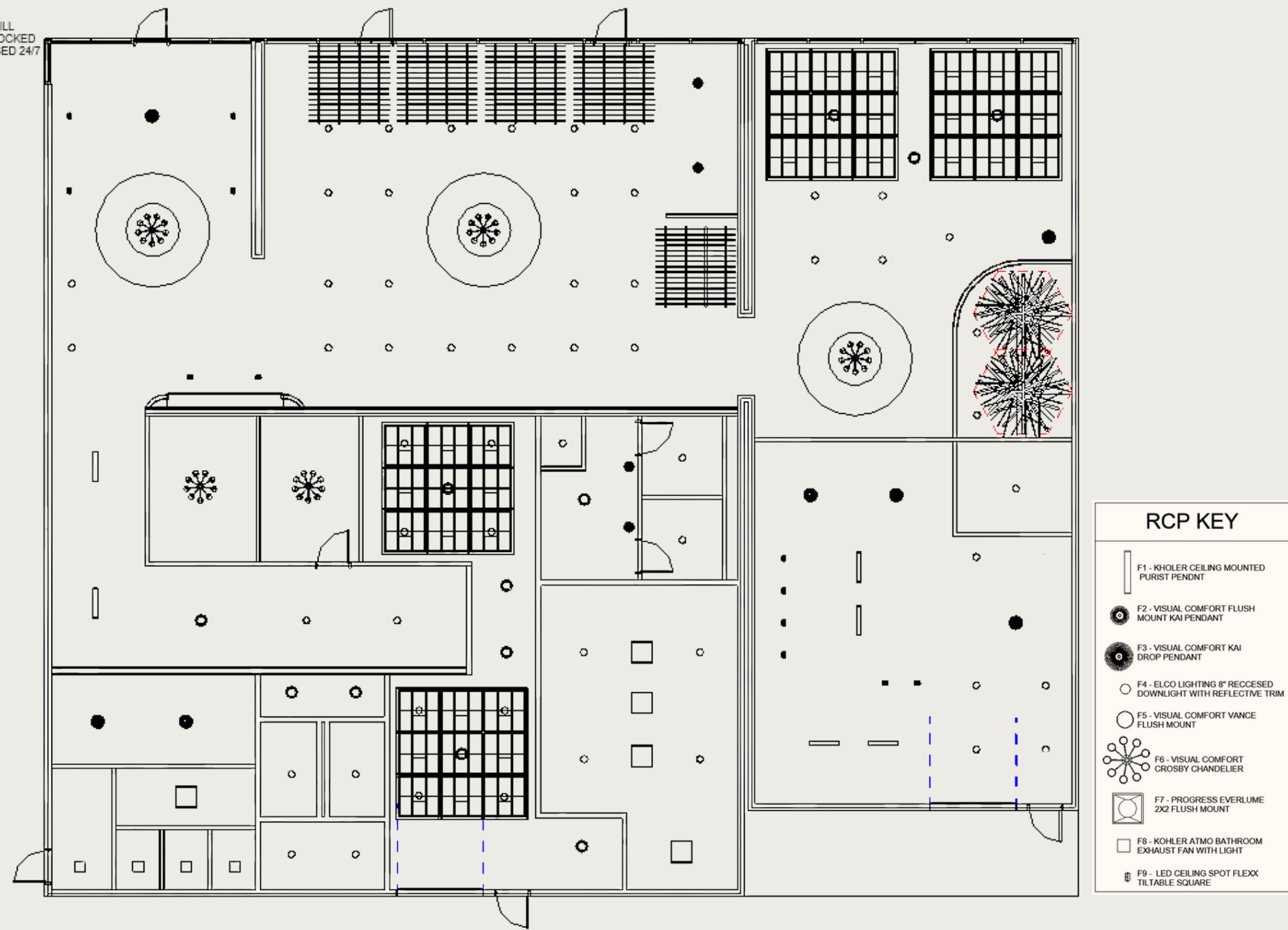




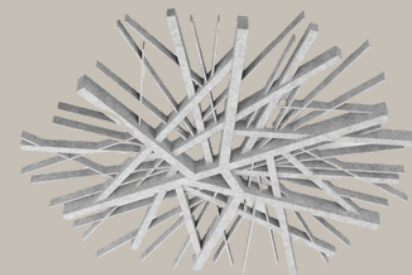
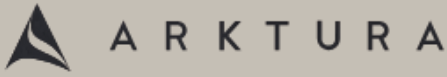
# DAILY CENTER LIFE SAFETY PLAN



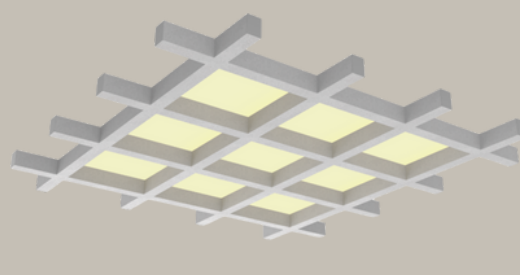
# REFLECTED CEILING PLAN



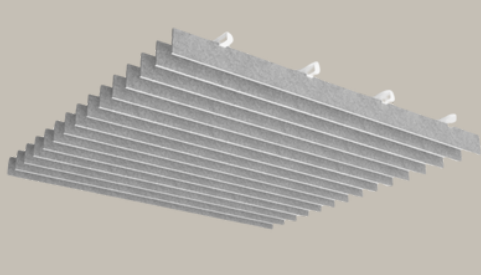
## ACCOUSTICAL FEATURES



Arborisa® Aura



SoftSpan® 24



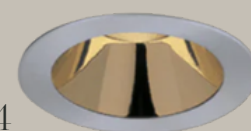
Atmosphera® Strata

## LIGHT FIXTURES

F2



F4



F9



F6



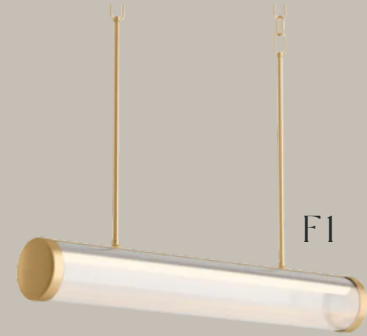
F5



F3



F1



F8





# THE DAILY CENTER MATERIALS AND SPONSER HIGHLIGHT

FINE LINE  
MILLWORKS

INDIANAPOLIS, INDIANA

HIGH QUALITY COMMERCIAL MILLWORK TAILORED TO MEET THE SPECIFIC NEEDS OF A BUSINESS OR INSTITUTION. OUR TEAM COMBINES EXPERT CRAFTSMANSHIP TO DESIGN AND FABRICATE UNIQUE MILLWORK SOLUTIONS FOR OUR COMMERCIAL DESIGN & BUILD PARTNERS.




ALL  
CUSTOM  
ITEMS.  
SOME  
USING  
FINE LINE  
MILLWORKS  
SYSTEM  
PANELS.  
WALNUT  
AND WHITE  
OAK.






THE DAILY CENTER MATERIALS AND SPONSER HIGHLIGHT

MAYERFABRICS




**RITZI**  
Cloud 401-007




**RITZI**  
Beach 401-017



**RIVIERA**  
Petal 327-011 ♡

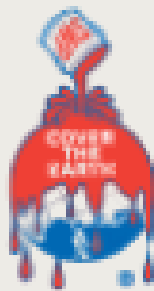


**OMEGA**  
Bone OM-017 ♡



**SCOUT**  
Brass 470-002

ALL  
LOW  
VOC!



SHERWIN-WILLIAMS.

INDOOR AIR QUALITY IMPACTS EVERYONE, INCLUDING THOSE WHO MAY BE MORE VULNERABLE CHILDREN, THE ELDERLY, AND PEOPLE WITH HEALTH CONDITIONS LIKE ASTHMA AND HEART DISEASE.



ALL PAINT  
SELECTED  
IS PROMAR  
400 ZERO  
VOC  
INTERIOR  
LATEX

SW 7631 City Loft	SW 9661 Radiant Dawn <i>Expert Pick</i>	SW 7570 Egret White
ON WALLS AND CEILING	ON LOCKERS AND MAILBOXES AND USED ON LOGO WALL	ON EXPOSED CMU WALLS





# THE DAILY CENTER INTERIOR VIEWS





# THE DAILY CENTER INTERIOR VIEWS

