

THE **DAILY**CENTER



2025 STUDENT COMPETITION

SOPHIE MARIACHER | SMARIACH@PURDUE.EDU | 317-395-4973
PURDUE INDIANAPOLIS

THE **DAILY** CENTER



2025 STUDENT COMPETITION

THE DAILY CENTER

WELCOME TO *THE DAILY CENTER*

IF YOU'RE NAVIGATING LIFE AFTER FOSTER CARE OR FACING HOMELESSNESS, THE DAILY CENTER IS HERE FOR YOU. OUR DOORS ARE OPEN TO PROVIDE YOU WITH A **SAFE**, **WELCOMING**, AND **LOW-BARRIER SPACE** WHERE YOU CAN **RECHARGE**, **REFOCUS**, AND **REBUILD**.

OUR SLEEK, MODERN DESIGN OFFERS A COMFORTABLE AND DIGNIFIED ENVIRONMENT WHERE YOU CAN TAKE THE NEXT STEPS TOWARD INDEPENDENCE. WHETHER YOU NEED A PLACE TO REST, LEARN, OR PLAN FOR YOUR FUTURE, THE DAILY CENTER IS HERE TO SUPPORT YOU—**WE'RE IN THIS TOGETHER**.

YOU ARE WELCOME HERE. YOU BELONG HERE.
COME AS YOU ARE.

HOURS OF OPERATION: 7:30 am - 9:00 pm

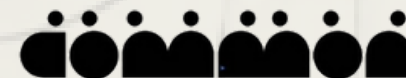
RESOURCE SPACE:



OUR OFFERINGS

- INTERNET AND TELEPHONE ACCESS TO ENCOURAGE **CONNECTEDNESS**.
- COUNSELING SESSIONS FOR **EMOTIONAL SUPPORT** AND **LIFE GUIDANCE**.
- CLASSROOMS OFFERING EDUCATIONAL COURSES AND SKILL-BUILDING WORKSHOPS TO ENCOURAGE **POST-STAY REINTEGRATION**.
- MAILBOXES AND STORAGE LOCKERS FOR TEMPORARY AND LONG-TERM USE, ENCOURAGING **COMFORTABILITY** AND **SAFETY**.
- PRIVATE SHOWERS AND LAUNDRY FACILITIES TO FOR PERSONAL CARE.

THE DAILY CENTER



come as you are.



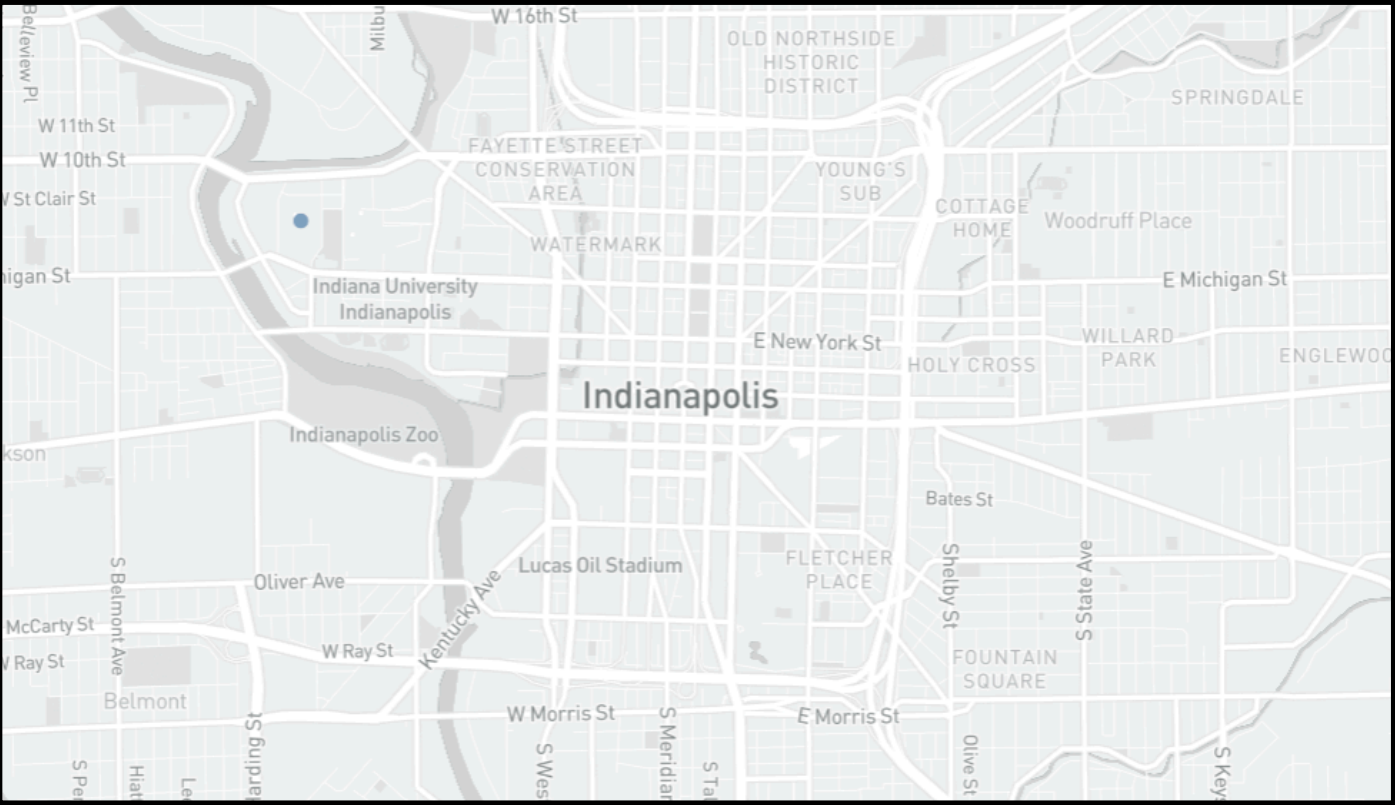
THE DAILY CENTER

THE
DAILY
CENTER



we're in this together.

THE DAILY CENTER



MAP OF
INDIANAPOLIS, IN

Indianapolis, Indiana, has a growing need for accessible services supporting individuals experiencing homelessness. The city’s downtown and near-downtown areas face some of the highest rates of homelessness, with proximity to key service providers and transportation hubs making this region an ideal location for a drop-in center. The city’s existing homeless shelters often have limited capacity and eligibility restrictions, creating a gap in low-barrier, flexible-access services. Additionally, Indianapolis’ climate, with cold winters and hot summers, makes year-round access to climate-controlled spaces essential for health and safety. Partnering with local food banks, healthcare providers, and social service organizations could strengthen the center’s impact, offering wraparound services. The proposal aims to create a safe, modern, and supportive space to help individuals stabilize and reintegrate into the community.

RESEARCH

Drop-in centers, often referred to as access centers, are designed to serve individuals experiencing housing instability. These centers offer activities and resources that support essential physical, educational, psychological, and social needs. The philosophy behind these supportive spaces is that individuals are capable of successfully reintegrating into society if their basic needs are met while simultaneously promoting safety, connection, and support. Young people living without necessities and on the streets face a higher risk of various challenges, including victimization, substance abuse, and risky sexual behaviors. By providing a welcoming environment with low to no barriers to access, drop-in centers create a non-judgmental space that fosters personal growth, making reintegration into society achievable.

Drop-in centers for homeless youth address fundamental needs such as food, hygiene, and clothing, but they also provide critical services that cater to higher-level needs, such as substance use treatment and mental health care. Unlike other services with restrictive rules, drop-in centers adopt a "come as you are" approach, breaking down barriers to access. Estimates suggest that between 500,000 and 1.7 million youth experience homelessness in the U.S. each year, highlighting the urgent need for increased attention to this group. A report by Van Leeuwen found that 60% of homeless youth who were provided with transitional housing were able to permanently exit the streets. While it is unlikely that homelessness will be completely eradicated in our society, helping homeless individuals reintegrate into the community can not only prevent ongoing homelessness into adulthood but also reduce the immediate costs associated with homelessness, such as premature death, health emergencies, and mental health crises.

PROJECT GOALS:

YOUTH FOCUS



THIS **MODERN** SPACE ATTRACTS THE ‘**POST FOSTER CARE**’ YOUNG ADULT AGES 18-25. WE ARE **REMOVING THE STIGMA** OF ASKING FOR HELP IN HOMELESS COMMUNITIES.

LOW BARRIER



THE **INVITING** AND **NON-THREATENING** ENVIRONMENT OF THE DAILY CENTER INCREASES THE LIKELIHOOD OF GUESTS ENTERING THE SPACE WITHOUT FEAR OF REJECTION OR FAILURE, **THIS IS A SAFE SPACE.**

SUPPORTIVE



OUR SUPPORTIVE SERVICES, **BOTH PHYSICAL AND EMOTIONAL**, ALLOW GUESTS TO STOP RUNNING AND **START HEALING.** WE BELIEVE THE DAILY CENTER IS A **HOME FOR ALL.**

REINTEGRATION



ALTHOUGH SHORT TERM AND LONG TERM HELP IS AVAILABLE, THE GOAL FOR GUESTS IS **SUCCESSFUL REINTEGRATION.** BY TAKING ADVANTAGE OF CLASSES, THERAPY, AND PHYSICAL CARE, WE ENCOURAGE ONCE OVERWHELMED INDIVIDUALS TO **FIND THEIR TALENTS USE THEIR STRENGTHS** TO REINTEGRATE INTO SOCIETY.

CONCEPT STATEMENT

THE INSPIRATION BEHIND THE DAILY CENTER STEMS FROM A HOLISTIC VISION OF WHAT THE SPACE REPRESENTS—**STRENGTH, RESILIENCE, AND RENEWAL.** EVERY DESIGN DECISION, FROM **BOLD TYPOGRAPHY** AND **STRONG GEOMETRIC FORMS** IN THE BRANDING TO **DURABLE MATERIALS** LIKE STEEL, METAL, AND CONCRETE, WEAVES A POWERFUL VISUAL STORY FROM THE MOMENT GUESTS ARRIVE. WHILE DROP-IN CENTERS OFTEN PROVIDE ‘SHORT-TERM FIXES,’ THIS SPACE IS INTENTIONALLY DESIGNED TO EMPHASIZE A LASTING IMPACT.

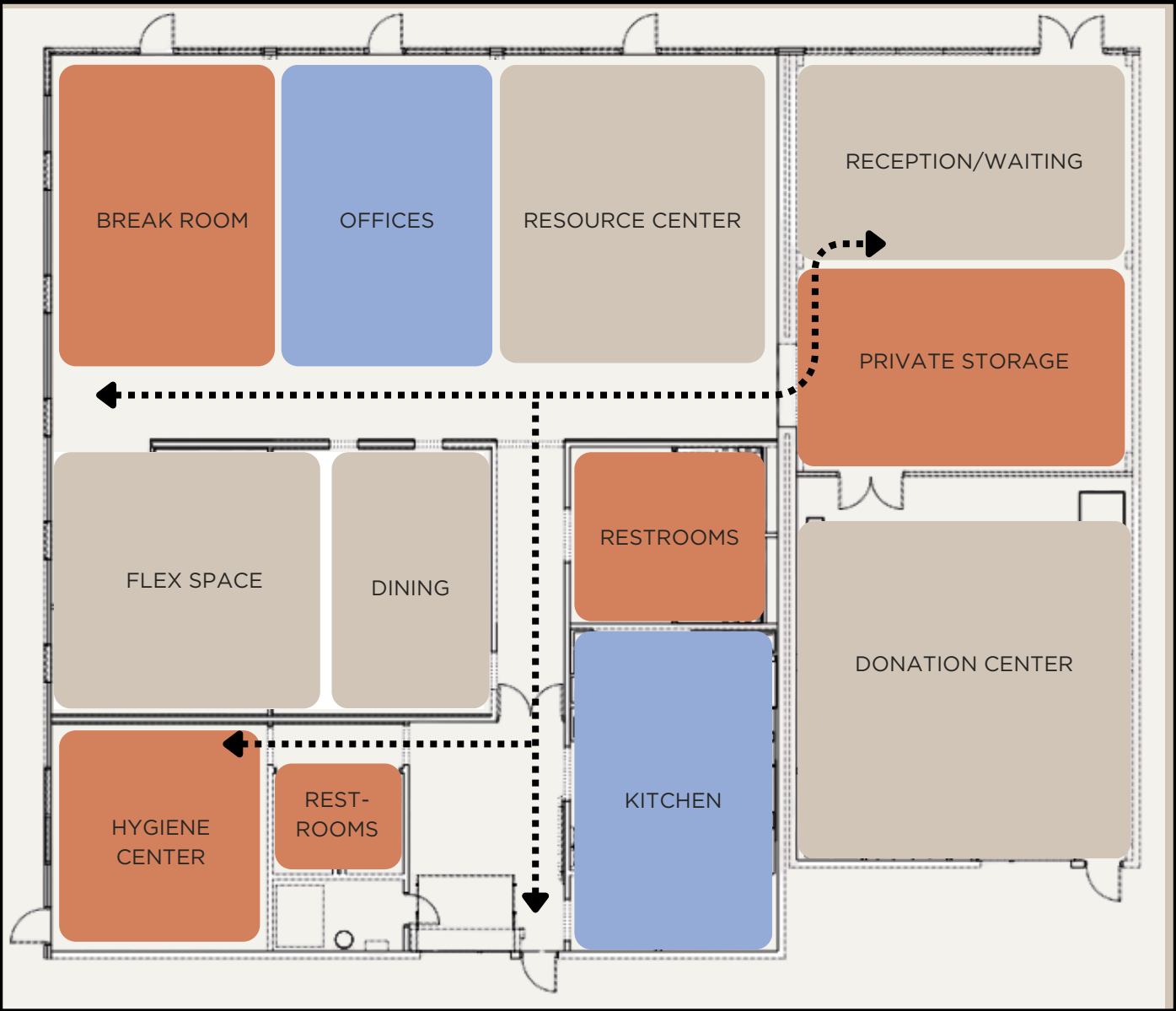
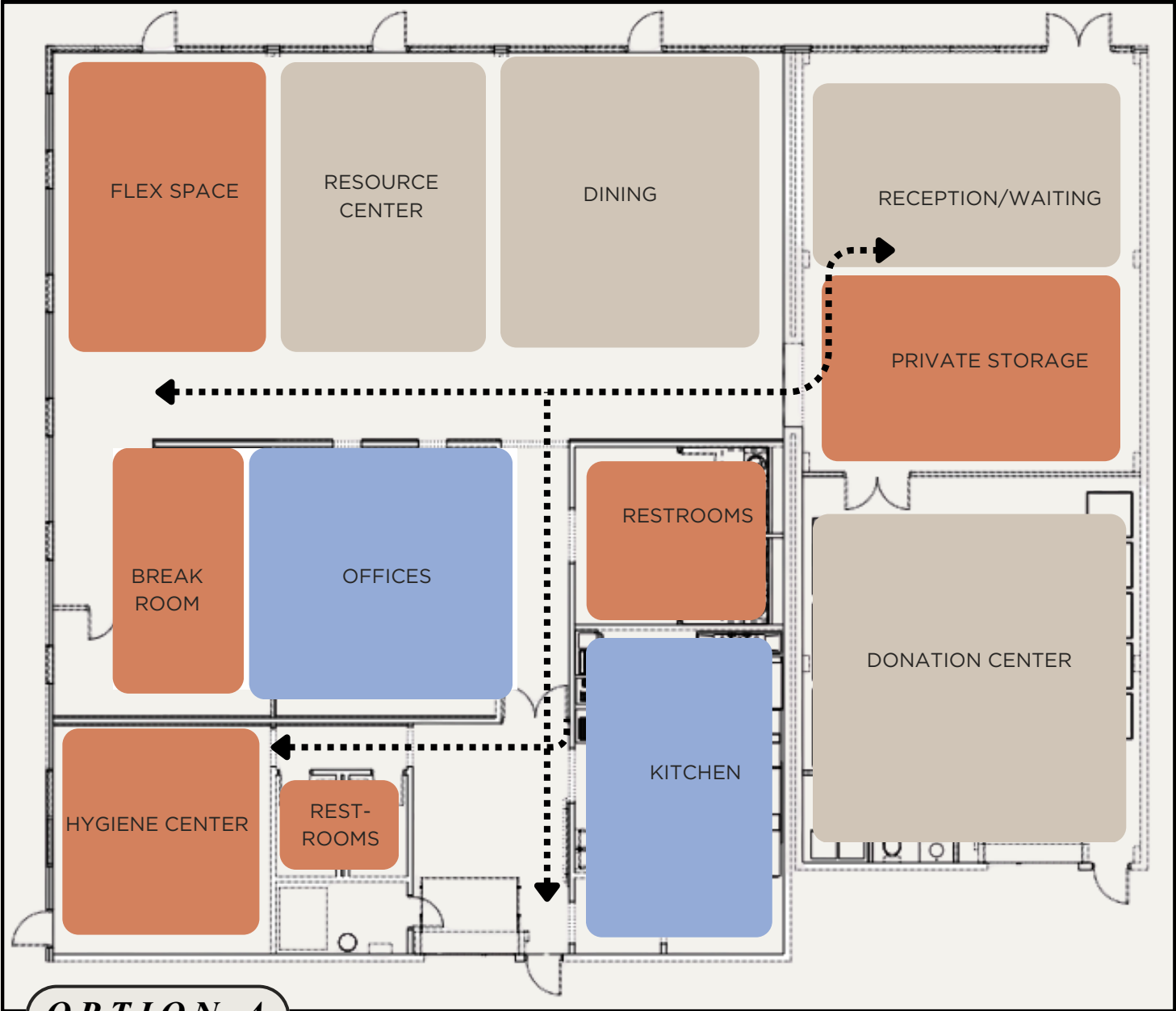
THIS SPACE IS BOTH A REFLECTION OF THE GUESTS’ INHERENT **STRENGTH** AND A TESTAMENT TO THEIR **PERSEVERANCE.** MORE THAN JUST A PLACE OF REFUGE, THE DAILY CENTER HONORS AND CELEBRATES THEIR JOURNEY OF **RESILIENCE** THROUGH THE REFLECTION OF **A STRONG AND BOLD DESIGN,** WHILE OFFERING THE GUIDANCE AND SUPPORT NEEDED TO TAKE THEIR NEXT STEPS FORWARD.

INSPIRATION:



SLEEK | BOLD | STRONG

SPACE PLANNING



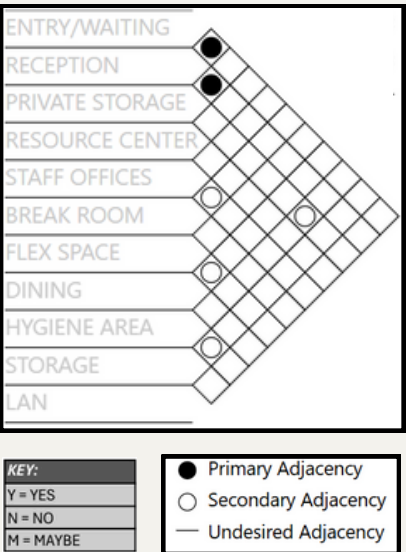
OPTION B - CHOSEN PLAN

LEGEND

- PUBLIC ZONES
- PRIVATE ZONES
- WORK ZONES

CIRULATION

ROOM	SQ. FT.	PUBLIC/PRIVATE	DAYLIGHT	PLUMBING	LOCATION NOTES	SPECIAL NOTES
ENTRY/WAITING	~1,200 SQ. FT.	PUBLIC	Y	N	Entry	Seating up to 6 people Information boards, display locations for important information, resources, and schedules
RECEPTION	~1,150 SQ. FT.	PUBLIC	Y	N	Entry	Accessible counter (ADA) Include counter space for printer and files
PRIVATE STORAGE	~1,300 SQ. FT.	PRIVATE	N	N	Close to entry	Multiboxes for up to 50 people Storage lockers for up to 50 people for personal belongings, supplies, and donations Locate next to front/closet to reception
RESOURCE CENTER	~1,000 SQ. FT.	PUBLIC/PRIVATE	Y	N		Benching station with computers and charging stations Seating area for library (books and games)
STAFF OFFICES	~1,450 SQ. FT.	PRIVATE	Y	N		Coffee and snack bar, a place to enjoy refreshments Include tv and a variety of seating including ADA phone booths, secluded area for private phone calls
BREAK ROOM	~1,150 SQ. FT.	PRIVATE	N	Y		(2) Private offices with desk and 2 chairs for meeting with guests (2) open desks
FLEX SPACE	~1,000 SQ. FT.	PUBLIC	Y	N		Seating for up to 25 people Multiple seating arrangements for workshops, groups, classroom settings Electrical outlets/charging options Include and document ADA-compliant seating Consider acoustical control, projector and sound system for presentations and screenings
DINING	~1,450 SQ. FT.	PUBLIC	Y	Y	Next to kitchen	Seating for 15 people Variety of seating in varying heights and accessible areas Disposal area (even though dishes are taken to kitchen) Counter spaces for meal prep with microwave
HYGIENE AREA	~1,750 SQ. FT.	PRIVATE	N	Y		ADA bathrooms with showers Laundry area with folding tables (4) washers, (4) dryers, may be stockable
STORAGE	~1,250 SQ. FT.	PRIVATE	N	N		Utility: cleaning supplies and equipment, include sink Food/compostable goods/equipment storage/office supplies
LAN	~1,500 SQ. FT.	PRIVATE	N	N	Locate in day area	Server, security and other electrical equipment

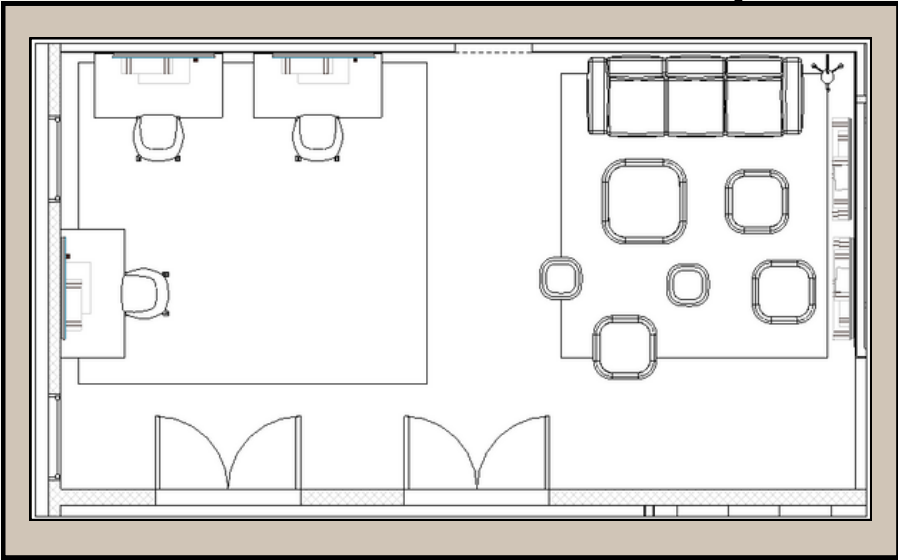


BOTH OPTIONS ARE SIMILAR IN STRUCTURE AND FLOW OF TRAFFIC, HOWEVER, THE DELEGATION OF SPACE VARIES SLIGHTLY BETWEEN BOTH MODELS. BOTH PLANS ARE INVITING AS THE MAIN ENTRANCE FLOWS INTO THE WAITING AND THE PRIVATE STORAGE. HOWEVER, OPTION B HAS THE DINING SPACE DIRECTLY OFF OF THE KITCHEN, PROVIDING EASIER ACCESS FOR GUESTS AND ENTERTAINING IN THE CASE OF AN EVENT OR SOCIAL GATHERING. ADDITIONALLY, THE BREAKROOM AND OFFICES PLACED IN THE BACK LEFT PROVIDE MORE PRIVACY AND ACOUSTICAL SEPARATION FROM THE SURROUNDED SPACES, ALLOWING EMPLOYEES A QUIET SPACE TO WORK AND MEET WITH GUESTS WHEN NEEDED. THIS IS OPPOSED BY OPTION A, AS THE OFFICES AND BREAKROOM ARE LOCATED CENTRALLY, WHICH COULD BE PROBLEMATIC IN TERMS OF ACOUSTICS AND PRIVACY. OPTION B WAS CHOSEN AS THE IDEAL SPACE PLAN AS IT FELT LIKE THE DINING, OFFICE, AND BREAKROOM LOCATION WOULD PROVIDE A BETTER EXPERIENCE FOR BOTH EMPLOYEES AND GUESTS.

FLOOR PLAN



 FIRST FLOOR PLAN - RENDERED
SCALE: NTS

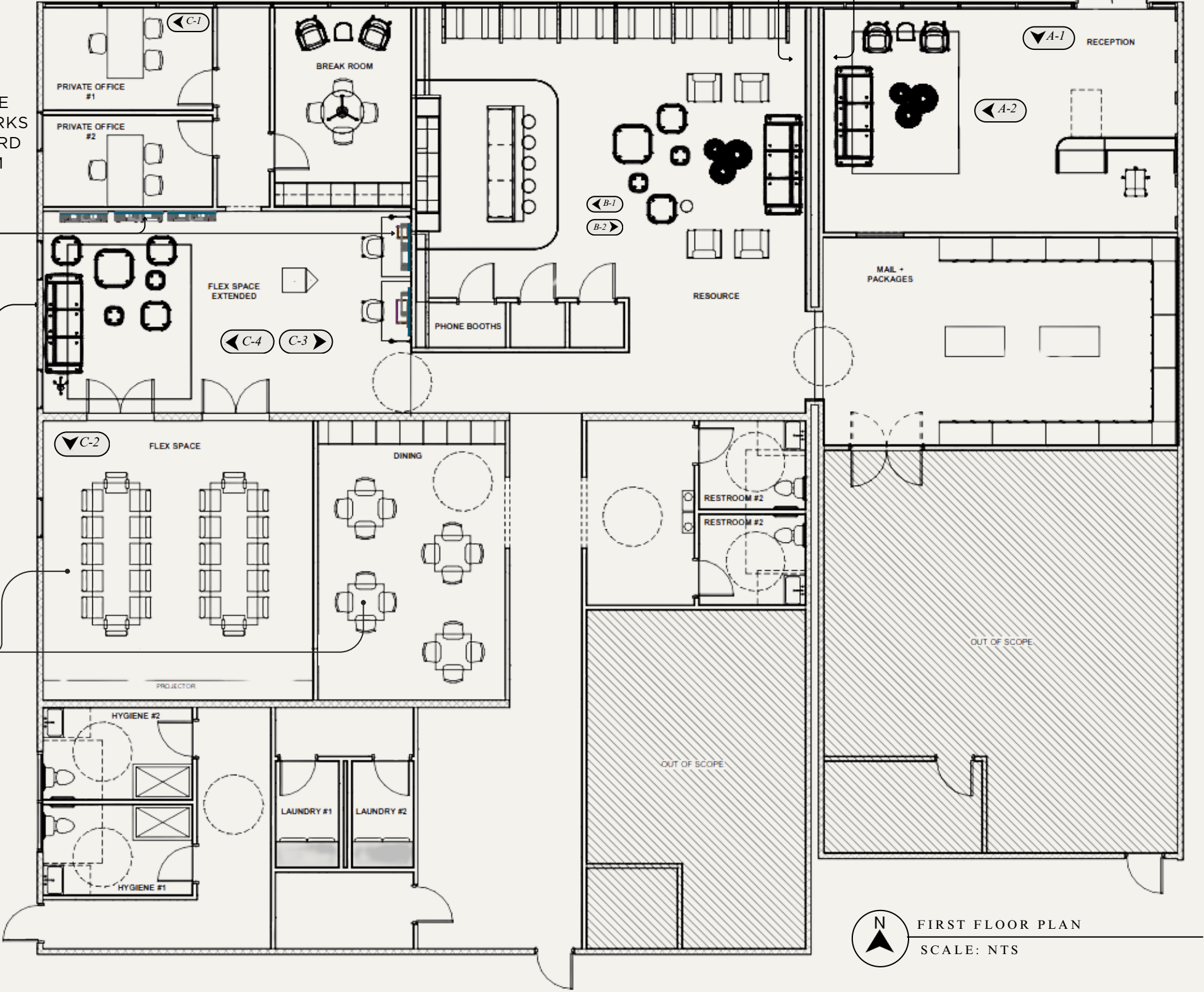


 SECONDARY FLEX SPACE PLAN
SCALE: NTS

FINELINE
MILLEWORKS
PEG BOARD
SYSTEM

FINELINE MILLEWORKS
CUSTOM WINDOW
SEATING

FINELINE MILLEWORKS
CUSTOM COAT RACK



 FIRST FLOOR PLAN
SCALE: NTS

FURNITURE SELECTIONS



CHROME
CHAIR BY
DESIGN
WITHIN
REACH



EAMES CHAIR
BY HERMES
MILLER



CUSTOM
WOOD TABLE
BY FINELINE
MILLEWORKS

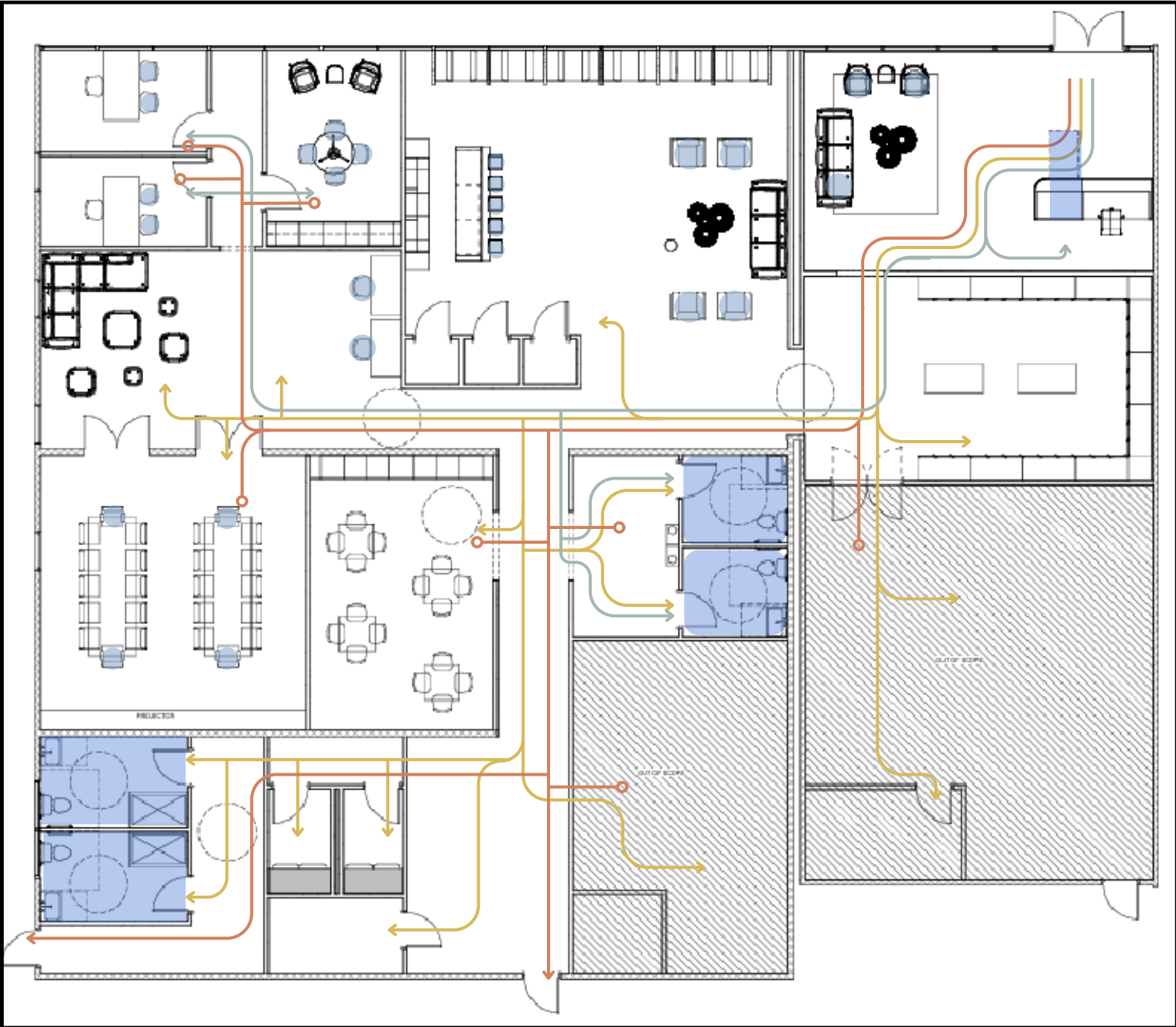


CHESTER
CHAIR BY
WEST ELM

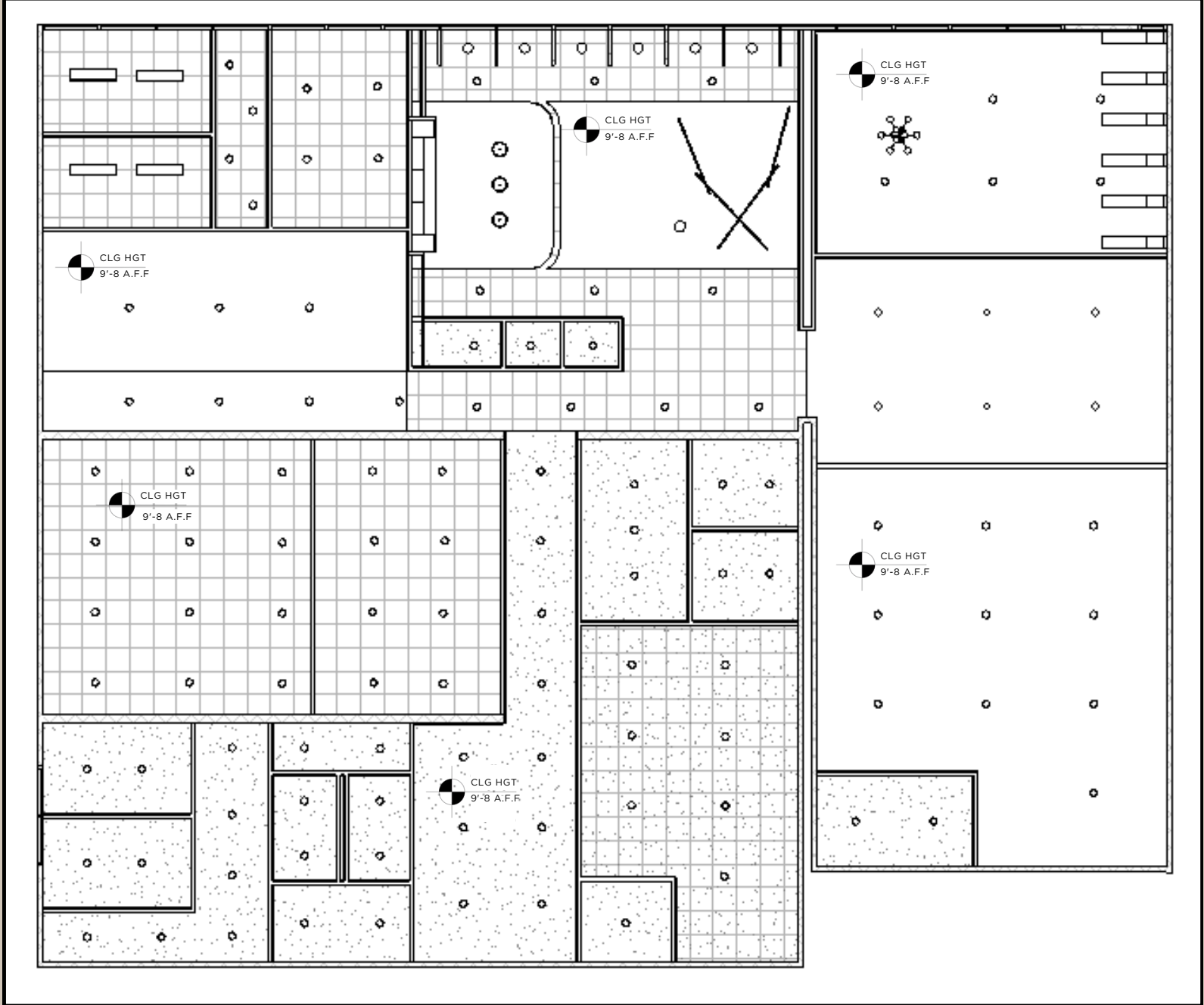


CUSTOM LAYERED
NESTING TABLES
BY FINELINE
MILLEWORKS

CODE PLAN AND RCP



N CODE STUDY PLAN
SCALE: NTS



N REFLECTED CEILING PLAN
SCALE: NTS

LEGEND

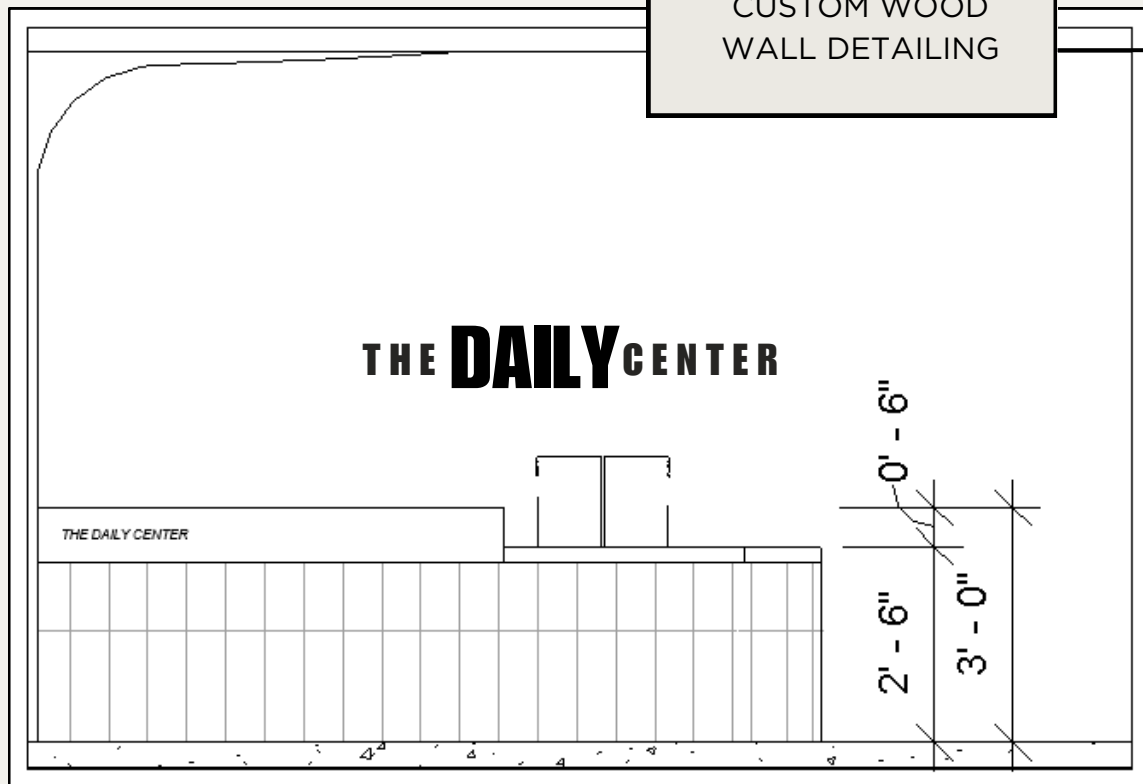
- EGRESS
- PATRON CIRCULATION
- STAFF CIRCULATION
- ADA FEATURES

- CARA CHANDELIER
- 5" CAN LIGHT
- STRING OF PEARL LIGHT
- REMING LINEAR CHANDELIER
- OPAL GLASS BULB
- SCOTLAND PENDANT LIGHT

- CARA CHANDELIER
CRI: 80
COLOR TEMP: 2800k
- STRING OF PEARL LIGHT
CRI: 90
COLOR TEMP: 2700k
- REMING LINEAR CHANDELIER
CRI: 90
COLOR TEMP: 2800k
- SCOTLAND PENDANT LIGHT
CRI: 90
COLOR TEMP: 3000k
- 5" CAN LIGHT
CRI: 90
COLOR TEMP: 3200k
- OPAL GLASS BULB
CRI: 80
COLOR TEMP: 3000k

ENTRANCE VIEWS

ELEVATION VIEW:

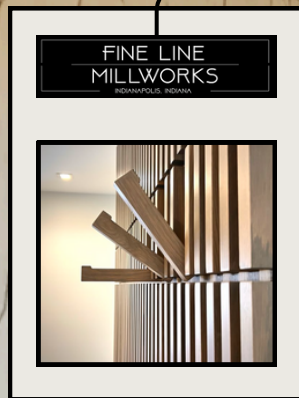


RECEPTION SPACE:

▲ A-1



▲ A-2



FINISHES

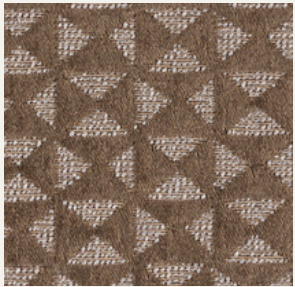


PRODUCT ANALYSIS

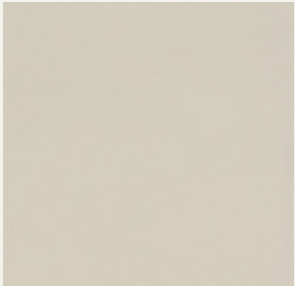
MAYERFABRICS



ARC FABRIC
IN STEEL



EPHESUS
FABRIC IN
MOCHA



ULTRAHIDE
FABRIC IN
BONE



ULTRAHIDE
FABRIC IN
NOIR



GREEK
VILLA

GENERAL WALL
PAINT



AGREEABLE
GREY

GENERAL WALL
PAINT



IRON ORE

ACCENT PAINT



URBANE
BRONZE

ACCENT PAINT



HANDPAINTED WALL
MURAL

*ALL GREENGUARD
GOLD CERTIFIED

*ALL LOW VOC

PRIVATE
OFFICES:

▲ C-1



FLEX/CLASS SPACE:

▲ C-2



