

AMERICAN  
SOCIETY OF  
INTERIOR  
DESIGNERS



2025 STUDENT COMPETITION

VIVIEN CRIMMINS, [VCRIMMIN@PURDUE.EDU](mailto:VCRIMMIN@PURDUE.EDU), PURDUE UNIVERSITY INDIANAPOLIS



THE  
**DAILY CENTER**  
— A HOMELESS SHELTER —

8911-8919 SOUTHEASTERN AVE  
INDIANAPOLIS, IN 46239

HOURS OF OPERATION: 7:30 A.M.-9:00 P.M.

# RESEARCH SUMMARY

**ADDRESSING THE CRISIS.** THE RISING POPULATION OF HOMELESSNESS IN INDIANAPOLIS, INDIANA, HAS BECOME A PRESSING ISSUE, WITH RATES NOW 7% HIGHER THAN THOSE RECORDED IN 2020, PRIOR TO THE PANDEMIC. THE INCREASING COST OF LIVING HAS DRIVEN MORE INDIVIDUALS TO SEEK REFUGE IN EMERGENCY SHELTERS—OR, TRAGICALLY, ON THE STREETS. THE PRIMARY CHALLENGES LIE IN SECURING AFFORDABLE HOUSING, ENSURING PROPER SAFETY MEASURES, AND DISMANTLING THE STIGMA OFTEN ASSOCIATED WITH HOMELESSNESS.

**INCLUSIVE DESIGN.** CREATING AND MAINTAINING ACCESSIBLE SPACES FOR THE HOMELESS IS ESSENTIAL, AS THESE SHELTERS PROVIDE NOT ONLY SECURITY AND WARMTH BUT ALSO VITAL SERVICES SUCH AS MEALS, FOOD ASSISTANCE, AND A SAFE PLACE TO CALL THEIR OWN. CREATING THESE SPACES COLLECTIVELY CAN HELP REDUCE HOMELESSNESS AND CONTRIBUTE TO FINDING A LASTING SOLUTION.

**REMOVING THE STIGMA.** REMOVING THE STIGMA OF HOMELESSNESS: A PATH TO COMPASSION AND UNDERSTANDING TO COMBAT THE STIGMA OF HOMELESSNESS, PUBLIC EDUCATION IS ESSENTIAL. SHARING ACCURATE INFORMATION AND PERSONAL STORIES HELPS HUMANIZE THE ISSUE, WHILE USING COMPASSIONATE, PERSON-FIRST LANGUAGE CHALLENGES HARMFUL STEREOTYPES. COMMUNITY ENGAGEMENT THROUGH VOLUNTEERING AND PANEL DISCUSSIONS FOSTERS EMPATHY, WHILE ADVOCATING FOR FAIR AND RESPECTFUL MEDIA REPRESENTATION PROMOTES AWARENESS. SUPPORTING INCLUSIVE POLICIES THAT PRIORITIZE AFFORDABLE HOUSING, MENTAL HEALTH SERVICES, AND JOB TRAINING ARE KEY TO ADDRESSING ROOT CAUSES. ADDITIONALLY, CREATING WELCOMING PUBLIC SPACES AND PROMOTING COMPASSIONATE INTERACTIONS CAN HELP SHIFT SOCIETAL PERCEPTIONS. BY EMBRACING EMPATHY AND ADVOCATING FOR SYSTEMIC CHANGE, WE CAN REDUCE THE STIGMA AND FOSTER A MORE COMPASSIONATE AND INCLUSIVE SOCIETY.

“HOMELESSNESS IS NOT A CHOICE. IT AFFECTS ALL OF US-EVERY GENDER, EVERY AGE, IN EVERY CITY”



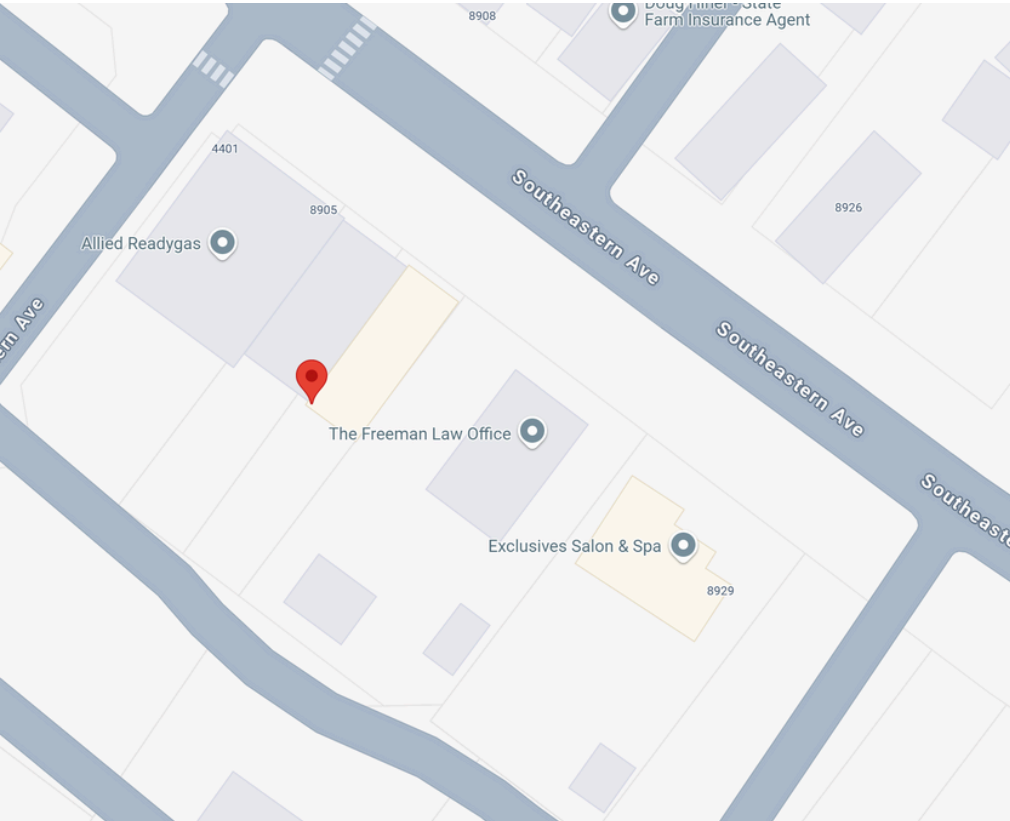
## DESIGN GOALS

- GOAL 1: REMOVE THE STIGMA-PUBLIC PERCEPTION
- GOAL 2: PRIORITIZE EFFICIENT SECURITY
- GOAL 3: EDUCATE + EMPOWER
- GOAL 4: INCORPORATE FOLLOW-UP PROGRAMS
- GOAL 5: REDUCE HOMELESSNESS PERCENTAGE

INDIANAPOLIS, INDIANA, IS A DYNAMIC CITY KNOWN FOR ITS BLEND OF URBAN SOPHISTICATION AND MIDWESTERN WARMTH. RENOWNED FOR ITS RICH RACING HERITAGE, IT HOSTS THE ICONIC INDIANAPOLIS 500 AT THE FAMED INDIANAPOLIS MOTOR SPEEDWAY. THE CITY’S DOWNTOWN OFFERS A MIX OF MODERN SKYSCRAPERS AND HISTORIC ARCHITECTURE, WITH MONUMENT CIRCLE SERVING AS A CENTRAL LANDMARK. CULTURAL ATTRACTIONS LIKE THE INDIANAPOLIS MUSEUM OF ART, THE EITELJORG MUSEUM, AND WHITE RIVER STATE PARK PROVIDE ARTISTIC AND RECREATIONAL EXPERIENCES. THE CITY IS ALSO A HUB FOR SPORTS, HOME TO THE NFL’S COLTS AND THE NBA’S PACERS. WITH A THRIVING CULINARY SCENE, WALKABLE NEIGHBORHOODS, AND A WELCOMING COMMUNITY, INDIANAPOLIS OFFERS A BALANCED MIX OF CULTURE, HISTORY, AND CONTEMPORARY ENERGY.



MAP VIEW





# CONCEPT STATEMENT

-AT THE DAILY CENTER, WE BELIEVE THAT SECURITY AND TOGETHERNESS ARE THE FOUNDATIONS OF REBULBING LIVES. AS A DEDICATED HOMELESS CENTER IN THE EAST-SIDE OF INDIANAPOLIS, OUR MISSION IS TO PROVIDE A SAFE, STABLE ENVIRONMENT WHERE INDIVIDUALS CAN FIND REFUGE, SUPPORT, AND A PATH FORWARD. SECURITY IS OUR TOP PRIORITY. WE OFFER A PROTECTED SPACE WHERE INDIVIDUALS CAN REST WITHOUT FEAR, KNOWING THEY ARE IN A STRUCTURED AND CARING ENVIRONMENT. OUR TRAINED STAFF ENSURES THAT EVERY PERSON WHO WALKS THROUGH OUR DOORS IS TREATED WITH DIGNITY AND RESPECT WHILE MAINTAINING A SAFE AND ORDERLY ATMOSPHERE. BEYOND SAFETY, THE DAILY CENTER FOSTERS A DEEP SENSE OF COMMUNITY. HOMELESSNESS CAN BE ISOLATING, BUT WE STRIVE TO CREATE CONNECTIONS – WHETHER THROUGH SHARED MEALS, SUPPORT GROUPS, OR SKILL-BUILDING PROGRAMS. HERE, EVERYONE IS VALUED, AND NO IS ALONE. THROUGH COLLABORATION WITH LOCAL ORGANIZATIONS, WE PROVIDE ACCESS TO ESSENTIAL RESOURCES, INCLUDING MEDICAL CARE, EMPLOYMENT ASSISTANCE, AND MENTAL HEALTH SERVICES. TOGETHER, WE EMPOWER INDIVIDUALS TO REGAIN INDEPENDENCE AND RESTORE HOPE. AT THE DAILY CENTER, SECURITY AND TOGETHERNESS ARE NOT JUST IDEALS THEY ARE PILLARS THAT HELP INDIVIDUALS TRANSITION FROM HOMELESSNESS TO A FUTURE OF STABILITY AND BELONGING.



SUPPORT



COMMUNITY



SECURITY

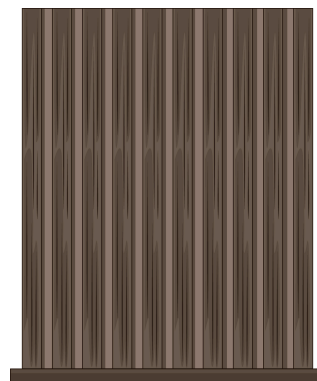
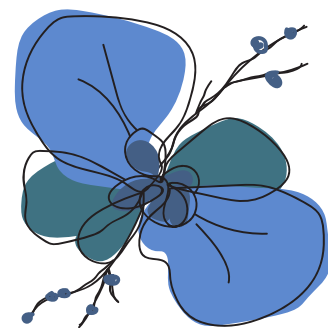


VALUE

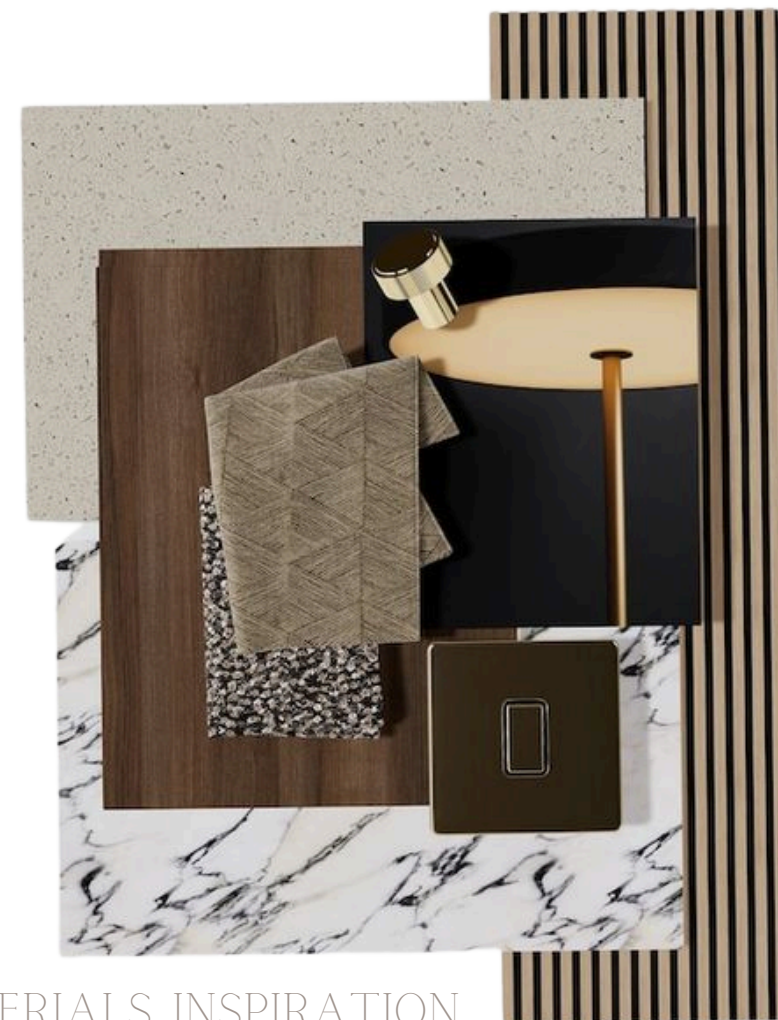
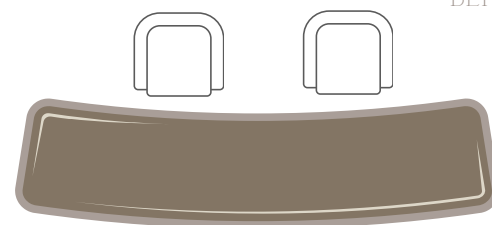
## MOOD BOARD



## SCHEMATICS



- PRIVACY WOOD SLATS BEHIND RECEPTION DESK



## MATERIALS INSPIRATION



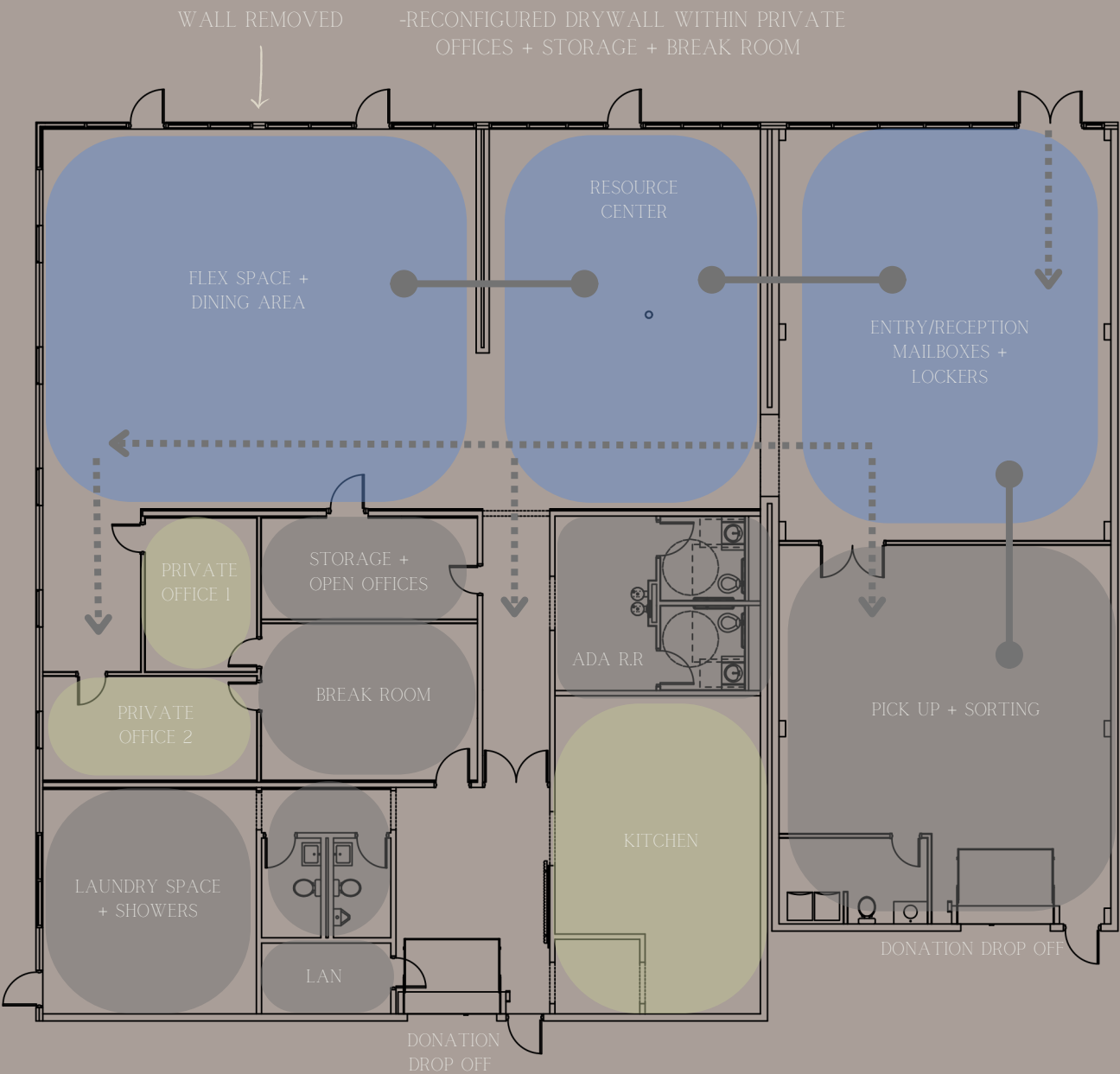
# BLOCK DIAGRAMS

PUBLIC ZONES PRIVATE ZONES WORK ZONES



## OPTION A:

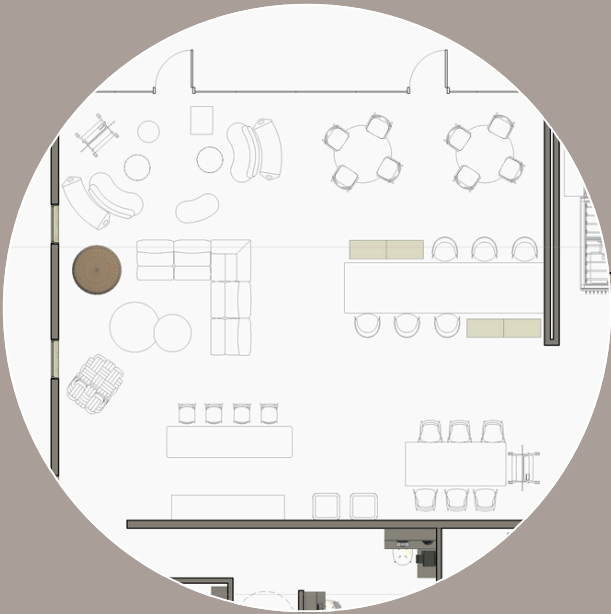
OPTION A HAS BENEFICIAL ASPECTS THAT INCLUDES MOST OF THE PRIVATE ZONES CENTRALIZED, ISSUES FLEXIBLE FLOW OF TRAVEL, AND A LARGE LAUNDRY SPACE FOR ITS USERS THAT IS IN CLOSE PROXIMITY TO ONE OF THE DONATION DROP OFF STATIONS.. THE BREAK ROOM IS FAIRLY LARGE FOR THE CONCEPT AND DOES NOT PROVIDE THE LAUNDRY SPACE AND SHOWERS IN THE SAME AREA.



## ★ OPTION B:

THIS OPTION IS SIMILAR TO OPTION A BUT PROVIDES A MORE EFFECTIVE SPACE PLAN. THE PRIVATE OFFICES ARE ADJACENT TO EACH OTHER FOR EASIER COMMUNICATION, AS WELL AS BEING LARGER IN SQUARE FOOTAGE, AND CONNECT TO THE BREAK ROOM. THE STORAGE ALSO HAS TWO ENTRY POINTS FOR BETTER ACCESSIBILITY AND ADEQUATE SPACE FOR THE OPEN OFFICES. THE FLOW OF TRAFFIC IS RELATIVELY THE SAME WITH THE EXCEPTION OF THE LAUNDRY SPACE AND SHOWERS BEING IN THE SAME SPACE. COMBINING THE TWO ALLOTTED SPACES OFFERS ITS USERS INSTANT AVAILABILITY TO CLEAN CLOTHING.

# FLOOR PLAN



FLEX SPACE - SECONDARY LAYOUT

NOTES:

- A CUSTOM FINELINE MILLWORKS WOOD PANEL SYSTEM THAT PROVIDES SECURITY & PRIVACY OF MAILBOXES + LOCKERS
- B LOCKED STORAGE ROOM TO SECURE MAIL
- C BOTH STALLS HAVE FULL-HEIGHT WALLS + DOORS FOR MAXIMUM PRIVACY
- D ALL SHOWER STALLS HAVE FULL-HEIGHT WALLS FOR MAXIMUM PRIVACY

- P1 RECEPTION PERSPECTIVE MARKER
- P2 RESOURCE CENTER PERSPECTIVE MARKER
- P3 FLEX SPACE + DINING PERSPECTIVE MARKER







ENTRY VIEW  
-reception

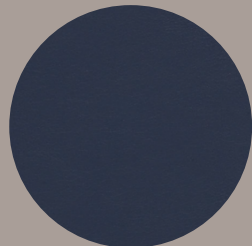
-ALL FABRICS ARE  
GREENGUARD GOLD  
CERTIFIED



CALACATTA  
CATHEDRAL  
QUARTZ COUNTERTOP



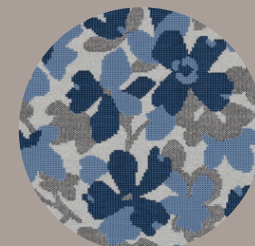
TULUM-SEASALT  
RUG



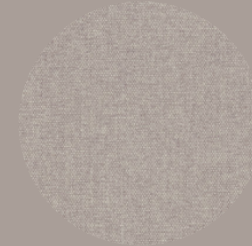
RITZI-NAVAL  
UPHOLSTERY



ACCESSIBLE BEIGE  
PAINT



FLORA-CORNFLOWER  
UPHOLSTERY



DELMAR-BEIGE  
UPHOLSTERY



TAUPE-PORCELAIN  
TILE





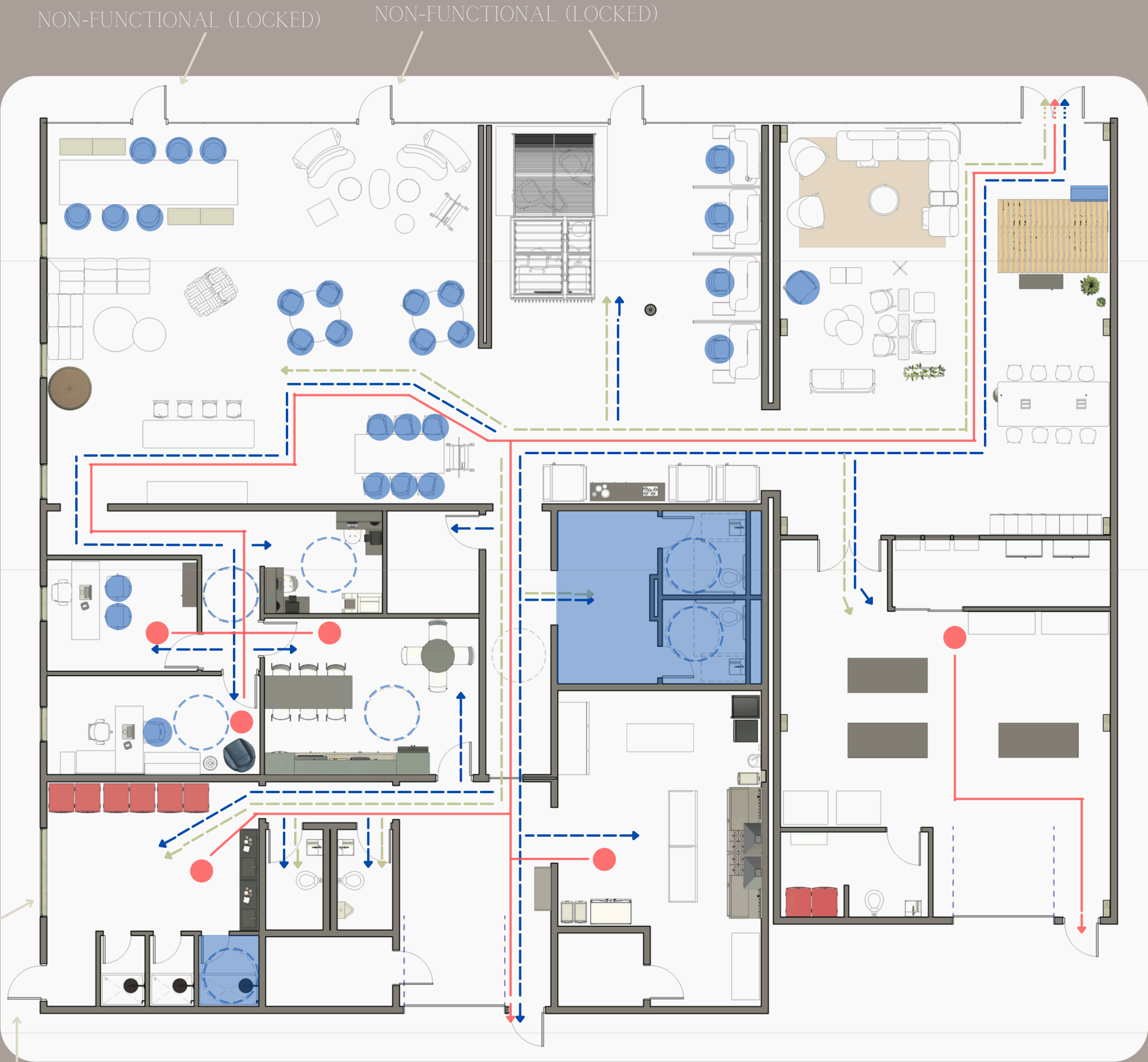
# CODE PLAN

## LEGEND

- EGRESS
- STAFF TRAVEL
- PATRON TRAVEL
- ACCESSIBLE SEATING
- WHEELCHAIR ACCESSIBILITY

TREATED GLASS

NON-FUNCTIONAL (LOCKED)



-PLAN NOT TO SCALE-





# FLEX SPACE + dining



SYSTEMS PANELS - UNFINISHED MDO 4' X 8' M6 BRASS INSERT - DIRECT MOUNT NO Z CLIP

FINELINE MILLWORKS  
PANEL SYSTEM



ACCESSORIES: 5.75" DOWEL SHELF - WILLOW

-ALL FABRICS ARE  
GREENGUARD GOLD  
CERTIFIED



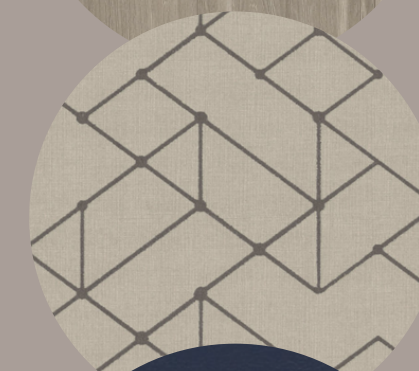
CALACATTA  
CATHEDRAL  
QUARTZ  
COUNTERTOP

**daltile**



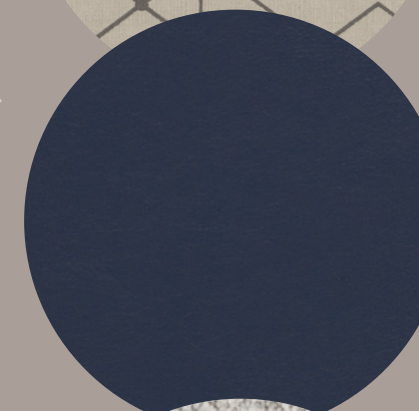
TAUPE-PORCELAIN  
TILE

**Bedrosians**



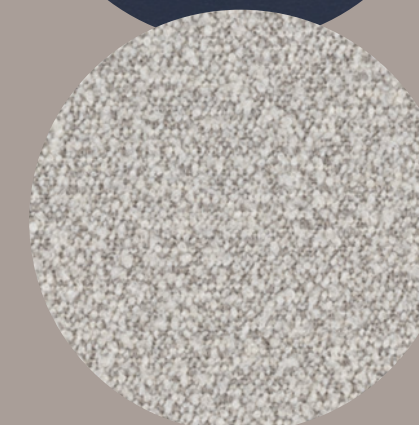
VECTOR-LATTE  
UPHOLSTERY

**MAYERFABRICS**



RITZI-NAVAL  
UPHOLSTERY

**MAYERFABRICS**



UTOPIA-DOVE  
UPHOLSTERY

**MAYERFABRICS**



# REFLECTED CEILING PLAN



## CEILING NOTES:

- 2 X 4 ACOUSTIC CEILING TILE REPRESENTED IN MAJORITY OF ALL ROOMS WITH 
- ALL CEILINGS ARE GWB UNLESS OTHERWISE NOTED
- CEILING HEIGHT IS 9'-10" AFF TO BOTTOM OF EXPOSED DECK WITH 12" SPACE FOR MECHANICAL PIPING
- SILL HEIGHT: 1'-0"
- ALL CEILINGS ARE 8'-10"



## LIGHTING LEGEND

5" RECESSED CAN LIGHT 

EMERGENCY EXIT LIGHT 

EXHAUST FAN WITH LIGHT 

TRACK LIGHTING 

FLUSH MOUNT 

PENDANT 

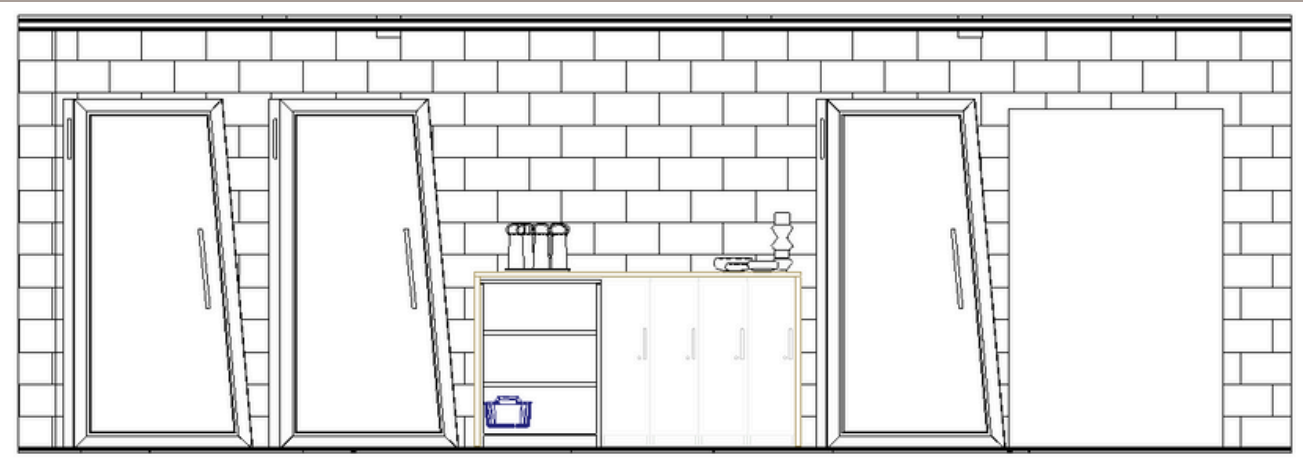
PENDANT 



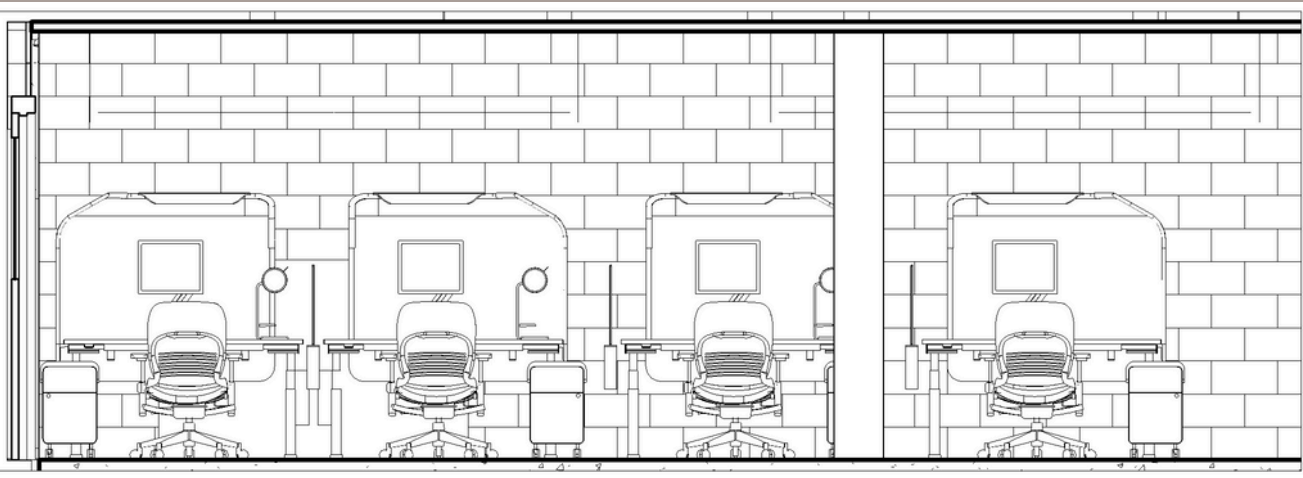
# RESOURCE CENTER + phone booths



ELEVATIONS



PHONE BOOTHS

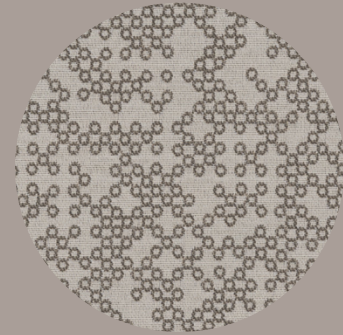


COMPUTER ACCESS



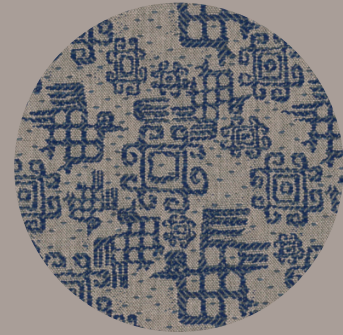
UTOPIA-DOVE  
UPHOLSTERY

**MAYER**FABRICS



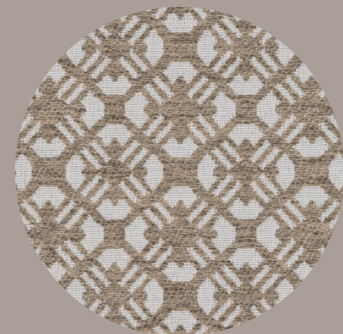
LOOP-MINERAL  
UPHOLSTERY

**MAYER**FABRICS



COMALAPA-  
INDIAN INK  
UPHOLSTERY

**MAYER**FABRICS



WEBSTER-CAFE  
UPHOLSTERY

**MAYER**FABRICS

-ALL FABRICS ARE  
GREENGUARD GOLD  
CERTIFIED