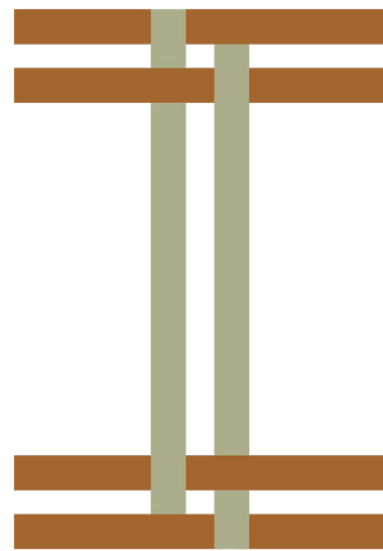


INTERLACE

DAILY CENTER



INTERLACE
DAILY CENTER

TRAUMA INFORMED DESIGN

PROJECT BRIEF Located outside of Indianapolis, Indiana, stands a building that has the potential to be re-imagined into a day center that will serve individuals in the local community. Those individuals experiencing homelessness, or families going through a transition in their life, will be able to use this day center to access resources otherwise unavailable to them to improve their health, well-being, and quality of life.

LOCATION The day center is located in Wanamaker, Indiana, a community located 9 miles southeast of downtown Indianapolis. The town has a rich history starting as a small village for travelers and farmers in the 1800s that grew into the urban community it is today. Many residents commute to Indianapolis for work but Wanamaker still has a small town feel with many festivals bringing the community together.

HOMELESSNESS IN INDIANAPOLIS

1,701 people in Indianapolis slept in emergency housing or went unsheltered in 2024, 5% higher than 2023.

9 out of 10 people said they were living in Indianapolis when they became homeless.

1 in 4 people were age 55 or older.

TRAUMA INFORMED CARE TIC is a human-centered approach to supporting people in shelters and supportive housing. The approach uses evidence based design and has 6 key principles including *safety, trustworthiness and transparency, peer support, collaboration and mutuality, empowerment and choice, and lastly cultural, historical, and gender issues.*

TRAUMA INFORMED DESIGN TID takes trauma informed care principles and integrates them with design principles to create spaces that are safe and promote well-being and healing to its residents. Its three pillars are *connection, choice, and comfort.*



CONNECTION Humans naturally want to feel connection, so that is crucial in spaces such as a day center. Design choices can help people connect with themselves, other residents, staff/ service providers, the surrounding community, and the building itself.

CHOICE Choice in a space allows for people to feel in charge of their own lives. This can range from having control over the lighting for certain tasks, access to multiple exits and pathways, and seating arrangements that give a choice for socializing or alone time.

COMFORT Comfort in a space requires features that allow someone to regulate their physical, psychological, and social self. This can include elements of Indoor Environmental Quality like temperature, auditory control, and biophilic design. Comfort also includes aesthetics. Spaces should spark joy and delight through artwork, finishes, and high-quality furniture to communicate value and respect.

DESIGN GOALS

Support staff and clients alike through carefully considered design choices to promote physical and mental well-being.

Create autonomy and privacy while maintaining a safe environment for staff and clients.

Recognize clients right to choice, connection, and comfort. Promote connection to others, the community, and to the self.

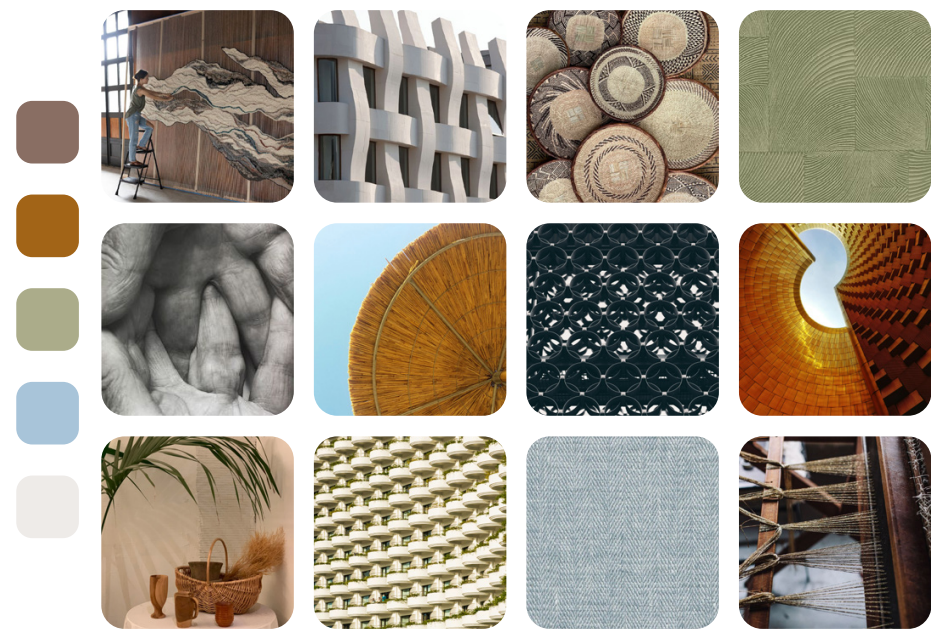
Consider client needs coming from all backgrounds, past trauma experiences, cultures, capabilities, and age range to accommodate and welcome all.

INTERLACE DAILY CENTER

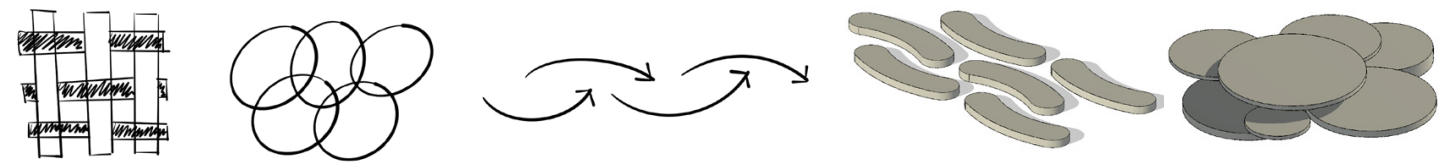
A WOVEN COMMUNITY Woven art such as baskets and weavings have deep meaning and historical values throughout all different cultures and heritages. People would weave their stories and emotions throughout the artworks through the scenes they depicted. These works have been made in Indiana from the Native Americans to the settlers, which some can be seen on display in the Eiteljorg Museum in Indianapolis. They also are created in present time, with artists displaying their work in many of the art festivals and historical recreations throughout Indiana. The daily center will feature artwork in multiple places throughout the design, whether from local artists or the clients themselves, with having a space to create art in one of the areas. Creating art with your hands can provide a mental break and help to balance emotions by providing an outlet. Having this outlet can distract from the hard realities of life and by showcasing the clients work, it will provide a sense of pride.

Weaving also represents unity of people and cultures, social bonding, and gathering of all backgrounds. Woven art would be a great driving force for the day center as the goal is to bring people together to provide support for one another. Everyone will have their own stories, needs, and problems but **a woven community is stronger than an individual one.**

MOOD BOARD



ABSTRACTING The images on the bottom left represent line, texture, color, pattern, rhythm, form, and unity. These will be abstracted throughout the design through **linear lines set inside organic lines, overlapping of space, and a variety of textures and materials. Unity and cohesion** will be the focus of the space, but with enough variety to represent celebrating people of all cultures and their personal stories.

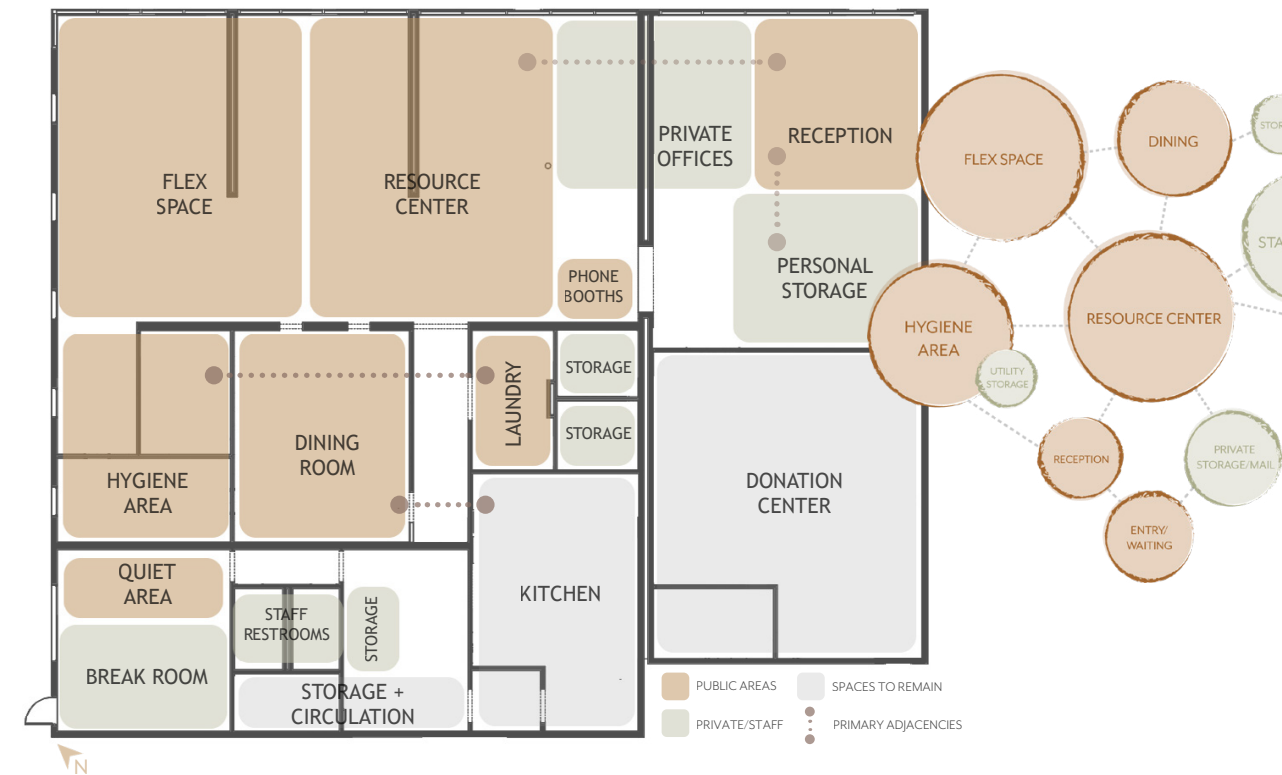


BRANDING Interlacing means to unite by lacing together or interweaving, and to mingle or intersperse something with. The name *Interlace Daily Center* was chosen to represent people’s stories that have woven together to bring them to the same time and place at the center, and together they can grow, heal, and become stronger as one. The name, logo design, and color palette of natural colors (which have been represented throughout all cultures and heritages) will provide a grounded environment and showcase the intent of the space.



FUNCTION AND PURPOSE

DIAGRAMS Interlace Daily Center holds both private and public spaces for the clients and staff. To accommodate both groups and provide them with a safe and functional space to work and rest, many considerations were taken. The center will provide services such as classes, personal storage, washer/dryer access, showers, and a computer lab. **Functional circulation paths, adjacencies, and access to daylight** were the top priorities when considering the two options below. As many existing walls that could remain were kept, as well as the use of a single, universal flooring, with the exception of the *Hygiene Area*, as budgets for the day center may be constrained.



OPTION 1 allows the resource center and flex space to share spaces for a free-flowing circulation. The private offices can be larger than Option 2, but the laundry is across the hallway from the hygiene area which may not be ideal for plumbing and cleaning reasons. Another storage closet is able to be added but the phone booths will not be in a such private area as compared to Option 2.



OPTION 2 - FINAL SELECTION provides ease of **access to the bathrooms** from the reception since access to bathroom can be an insecurity for those coming into the center for the first time. The private offices have **sight lines** to the resource center for security and are away from the break room so the staff can mentally **separate work from rest** and the users have **easy travel paths** to the offices for meetings. The laundry is near the hygiene area for close adjacency, combining potential wet areas for **easier cleaning**. The phone booths are in their own private room inside the *Quiet Area* which provides users who need to take a step back their own **retreat**. The *Staff Offices, Resource Center, Reception, and Flex Space* will all take advantage of the **natural light** provided by the front curtain wall, which is beneficial for mental and physical well-being.

THE LAYOUT



FLEX SPACE CONFIGURATION 1



FLEX SPACE CONFIGURATION 2

- A** COMMON BENCH
STEELCASE
Static - Greige, *Mayer Fabrics*
- B** REMIX SOFA
STEELCASE
Channel - Almond, *Mayer Fabrics*
- C** LISSONI SOFA
FRITZ HANSEN
Lachlan - Galaxy, *Mayer Fabrics*
- D** U-CHAIR
GREIGER FURNITURE
Chanel - Almond, *Mayer Fabrics*
- E** UNIVERSAL LOCKERS
STEELCASE
Light Grey Steel
- F** EAMES WIRE STOOL
HERMAN MILLER
Brown Metal
- G** EAMES SOFT PAD CHAIR
HERMAN MILLER
Pekoe Performance Fabric
- H** FOLD TABLE
NAUGHT ONE
Green Table Top
- I** POLLY STACKING CHAIR
STEELCASE
Stone Grey
- J** SIDE BY SIDE
STEELCASE
Explorer - Saddler, *Mayer Fabrics*
- K** ARIA PARTITIONS
SCRANTON PRODUCTS
Light Grey
- L** TS SERIES LOCKERS
STEELCASE
Light Grey

ALL FABRICS ARE BEACH CLEANABLE AND 100K ABRASION TESTED FOR HIGH DURABILITY



THE CEILING



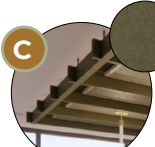
ALL CEILINGS AT 9' 10" A.F.F. AND USES PAINTED GYPSUM BOARD UNLESS OTHERWISE NOTED



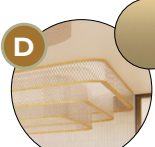
CAN-LESS LIGHTING
STATCO LIGHTING
CRI - 90



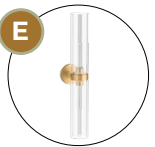
MAHONE FLUSH MOUNT
GENERATION LIGHTING
CRI - 90



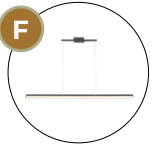
SUSPENDE PANELS
ACOUSTICAL
Felt (PET) + Metal



HANGING MESH FRAMES
STEELCASE
Mesh Pattern Metal + Brass



PURIST SCONE
KOHLER
CRI - 90



LINEAR PENDANT
ET2
CRI - 80



CEILING MOUNTED PANELS
ARMSTRONG
Shift - Almond, Mayer Fabrics

A RECESSED CAN LIGHTS

B FLUSH MOUNT LIGHT

E WALL SCONE

RECESSED LINEAR LIGHT

SUSPENDE LINEAR LIGHT

PRIVITY GLAZED WINDOWS

EMERGENCY LIGHTS

EXT. SPOT LIGHTS

MD MOTION SENSOR

PENDANT LIGHTS

FLUSH MOUNT LIGHT

PICTURE LIGHT

F SUSPENDE LINEAR LIGHT

CHANDELIER

MOTORIZED SHADES
(THERMAL CONTROL)

SECURITY CAMERAS

EXIT SIGN

EX EXHAUST FAN



ACCESSIBILITY + EFFICIENCY



CIRCULATION Both staff and clients have **unobstructed circulation** from the front entrance to the back according to code. There are many paths clients can take but they branch off a central one allowing many **social interactions**. The paths of clients and staff overlap providing opportunities to come together, further promoting the intent of the design.

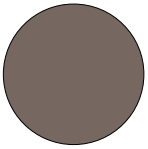
UNIVERSAL DESIGN Anyone of any age and capability can use this space as there are **many choices** in room function and seating. There is comfortable lounge seating, ergonomic chairs for computer use, and seating in varying heights throughout the space. All doorways and openings are at least **3' wide** and hallways are wide enough for **two-way traffic**.



RESOURCE CENTER



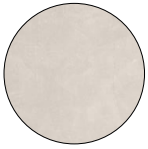
FABRIC PANELS
MAYER FABRIC
Shift - Almond



PAINTED METAL
SHERWIN WILLIAMS
Garret Gray



TILE WALL
MINERAL TILES
White - Gloss



CONCRETE FLOOR
SHERWIN WILLIAMS
Acrydur - Resin Protection

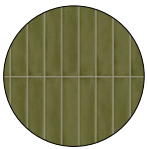
ALL MATERIALS TO HAVE LOW VOCs.
FABRIC IS MOSTLY DARKER TO DISGUISE STAINS.
BUILT-INS, CABINETS, AND FURNITURE ARE MOSTLY METAL FOR DURABILITY AND CLEANING.
RESEARCH SHOWED CONCRETE FLOORING WAS FOUND TO BE THE MOST DURABLE AND EASY CLEANING FOR HIGH TRAFFIC CENTERS.

CONCEPT The coffee and lounge areas offer spaces for individual activities while maintaining connection. The acoustical ceiling flows into the bookcase shelves. The implied weaving of horizontal and vertical lines shown in the materials and shapes, along with the interaction of positive and negative space in the metal mesh above the coffee bar, create linear patterns within the curved forms of their bases. This design mimics the linear structure of a weaving when it's looked at from straight on, but as a different viewpoint is taken around the piece, it's found that its shape could be imperfect, malleable, and organic.

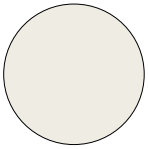




DINING ROOM



WALL TILE
ARTMORE TILE
Green - Gloss



WALL PAINT
SHERWIN WILLIAMS
Cold Foam



QUARTZ TOPS
MSI
Taj Mahal



CONCRETE FLOOR
SHERWIN WILLIAMS
Acrydur - Resin Protection

ALL MATERIALS TO HAVE LOW VOCs.
FABRIC IS MOSTLY DARKER TO DISGUISE STAINS.
BUILT-INS, CABINETS, AND FURNITURE ARE MOSTLY METAL FOR DURABILITY AND CLEANING.
RESEARCH SHOWED CONCRETE FLOORING WAS FOUND TO BE THE MOST DURABLE AND EASY CLEANING FOR HIGH TRAFFIC CENTERS.



SYSTEMS PANEL
FINE LINE MILLWORKS
Oak, Mysterious Velvet



LAUNDRY ROOM



FLEX SPACE

-  **METAL PANELS**
SHERWIN WILLIAMS
Rural Green
-  **FELT (PET) SYSTEM**
ARMSTRONG
Green
-  **PAINTED METAL**
SHERWIN WILLIAMS
Garret Gray
-  **TILE WALL**
MINERAL TILES
White - Gloss

ALL MATERIALS TO HAVE LOW VOCs.
FABRIC IS MOSTLY DARKER TO DISGUISE STAINS.
BUILT-INS, CABINETS, AND FURNITURE ARE MOSTLY METAL FOR DURABILITY AND CLEANING.
RESEARCH SHOWED CONCRETE FLOORING WAS FOUND TO BE THE MOST DURABLE AND EASY CLEANING FOR HIGH TRAFFIC CENTERS.

CONCEPT The interlocking suspended PET system paired with Sherwin Williams painted metal panels, offers acoustical control and a more intimate space for connection in the large Flex Area. On the back wall to the right, as well as in the Dining Room (shown on the page above), art pieces, displayed behind glass ensuring protection and ease of cleaning, can be sourced from local artists to foster community engagement. Additionally, front storage beneath the screens hold art supplies for local artists to teach classes, while the back wall (noted on the floor plan) dedicated for patron artwork, enhances self-esteem and motivation.

